



Industrial Liquid Coatings

Advanced Coating Solutions for Coil

Axalta's Coil Coating Solutions

Axalta is a recognized leader in the coatings industry, known for our deep expertise and forward thinking solutions. Our Coil Coating Solutions portfolio is thoughtfully engineered to serve a wide range of customer needs, delivering performance, durability, and aesthetic excellence across diverse applications.

Customer needs are at the heart of our innovation strategy. With a network of advanced technology centers, we proactively develop new products and processes to meet evolving demands. At the same time, we continuously refine our existing solutions to deliver even greater value. Backed by over a century of expertise in the coatings industry, our technical leadership drives meaningful progress for our customers and partners worldwide.

Proven Coating Technologies for Every Application

Let Axalta help you elevate your aluminum and metal coil projects with tailored solutions that boost beauty and durability.



PVDF

Polyvinylidene Fluoride or PVDF coating systems offer the best colorfast and chemical resistance performance for exterior metal building products.

Durapon70®



SMP

Silicone Modified Polyester coating systems offer good color chalk and fade protection for many applications.

Ceranamel™ XT-20S
Ceranamel XT-40S
Krypt-Stone



Polyester

Polyester coating systems provide a hard but flexible finish suitable for a wide range of interior and exterior applications.

Ceranamel XT-10
Ceranamel XT-20
Ceranamel XT-30
ZT Polyester



Acrylic

Acrylic paint systems are a good utilitarian option. They offer a good balance of hardness, flexibility, mar, and stain resistance. They are well-suited for demanding manufacturing processes.

DuraAcryl

Color and Design Innovations

From modern metallics to advanced texture technologies, Axalta offers an unparalleled palette of coil coating finishes that bring performance and design together.



Metallic Finishes

Sleek. Reflective. Sophisticated.

Modern, reflective, and upscale—our metallic coatings mimic the look of natural metals like aluminum and copper while boosting energy efficiency.

- Elevates curb appeal
- Reflects sunlight to reduce heat

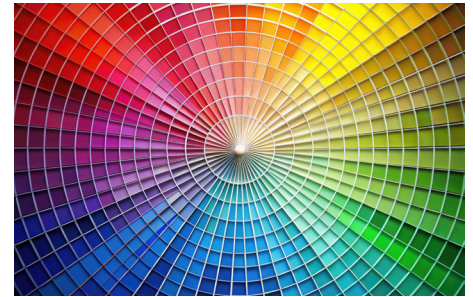


Wrinkle Texture Finish

Add dimension with every panel.

A unique coating that introduces surface texture, or wrinkle finish combines style and strength in equal measure.

- Increases hardness and abrasion resistance
- Creates a dynamic, light-scattering effect

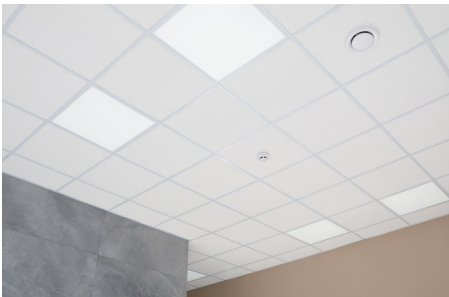


Exotic Color Matching

If you can dream it, we can match it.

Go beyond the standard swatch. Custom color matching helps your project stand out—perfect for unique brands and bold designs.

- Industry-leading customization
- Ideal for branded or signature looks



Super Flexible Coatings

Durability in motion.

Engineered for mechanical forming and shaping, these coatings are designed to flex over the tightest roll-formed demands.

- Stretches, bends, and shapes without failure
- Designed for demanding fabrication processes



Cool Roof Solutions

Cooler buildings, smarter performance.

Our cool roof coatings help reduce heat buildup and support sustainable building goals.

- Reflects solar energy to help reduce interior temperatures
- May contribute to long-term energy efficiency and LEED certification goals

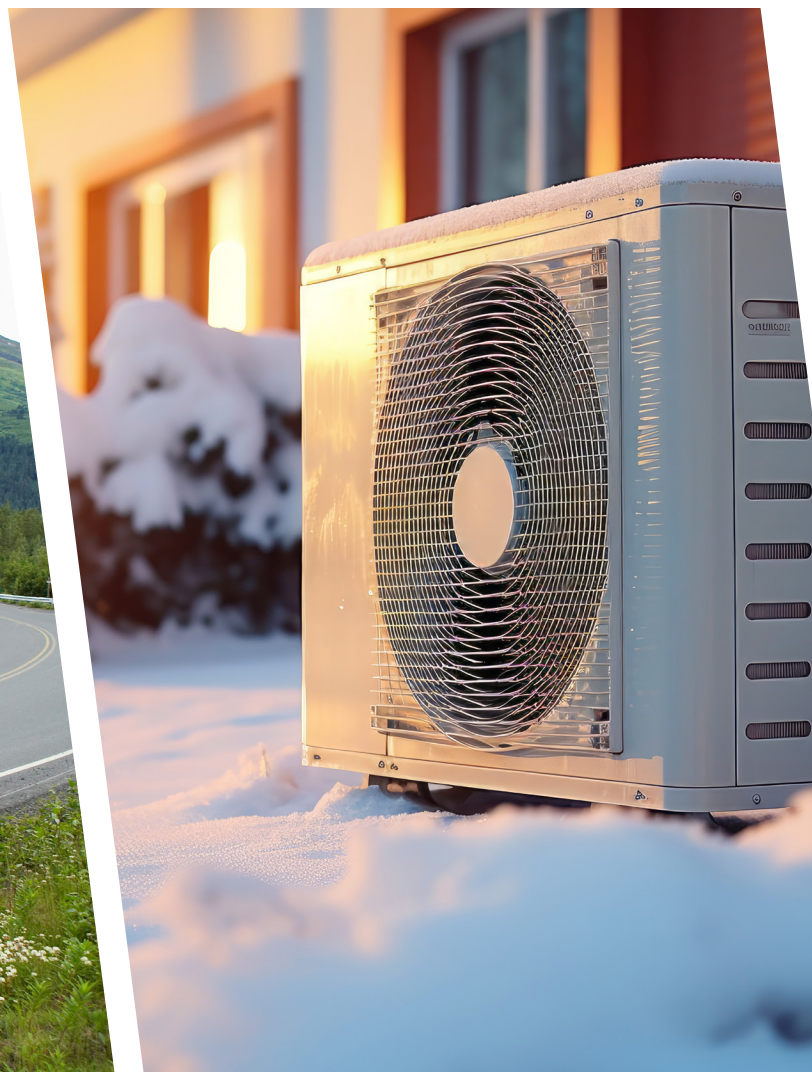


Low Gloss / Low Sheen

Subtle looks. Strong performance.

These understated finishes deliver a clean, architectural appearance while minimizing surface glare.

- Blend with modern design styles
- Reduces glare in high-light environments



Product Solutions Built for Every Standard

Axalta's Coil Coating solutions offer a versatile range of technologies designed to meet the unique performance and aesthetic needs of various industries. With coatings engineered to optimize durability, appearance, and cost-efficiency, we help our customers identify the ideal solution tailored to their specific application and project requirements.

Durapon70

Durapon70 is formulated with a unique blend of resins that includes our proprietary acrylic and 70% polyvinylidene fluoride (PVDF). It is designed as a premium finish that offers exceptional color stability, gloss retention, outstanding abrasion and chemical resistance, as well as excellent film flexibility.

This product is available in a wide range of colors, including metallic and exotic finishes.

Durapon70 utilizes high-quality, exterior-grade, durable color-fast ceramic pigments. Customers can choose from industry-standard colors or opt for custom colors through our efficient custom color matching process, which ensures quick delivery to meet their needs.

Highlights

- Premium exterior performance
- AAMA 2605
- Industrial & Architectural Applications

Ideal End Uses

- Roofing Panels
- Siding Panels
- Commercial & Residential Use

Ceranamel XT-40S

Ceranamel XT-40S is a silicone modified polyester (SMP) coating, designed to deliver exceptional long-term exterior performance for building products. The XT-40S system is formulated with a proprietary super-durable polyester resin that provides outstanding resistance to chalking, fading, and environmental weathering. It incorporates only the highest quality exterior-grade and ceramic pigmentation to ensure excellent color and gloss retention, as well as long-lasting resistance to high UV radiation.

Its long-lasting exterior weathering performance makes XT-40S coatings the ideal choice for all building components across commercial, residential, and agricultural applications. Additionally, the enhanced coating hardness and abrasion resistance make it an excellent option for metal roof tiles and shingles.

Highlights

- Versatile
- High-durability ratings
- Premium performance

Ideal End Uses

- Roof & Wall Panels
- Soffit & Fascia
- Commercial & Residential Use

Krypt-Stone

Krypt-Stone is a XT-40S two-coat system that consists of various colored textured base coats topped with a textured finish, creating an extremely tough surface that resists marring and scratching. The finish boasts excellent gloss and color retention, and the coating's appearance is designed to create a unique visual effect that enhances color depth.

While Krypt-Stone is a robust, abrasion-resistant paint system, it also provides the flexibility required for today's manufacturing of unique building products. This high-durability coating features special stain-resistant technology that is tough yet flexible enough to accommodate fabrication into various building components.

Highlights

- Commercial & Residential Applications
- Premium Interior & Exterior Performance
- High-durability ratings

Ideal End Uses

- Building envelope components
- Roof/Sidewall Panels
- Soffit & Fascia

Ceranamel XT-30

Ceranamel XT-30 is engineered to deliver exceptional coating performance for demanding manufacturing and end-use applications. This system offers the necessary hardness, flexibility, abrasion resistance, and stain resistance required for today's challenging environments. The robust proprietary resin system and pigment package can be customized to meet a range of specific fabrication and service needs.

The XT-30 coating system was specifically developed to replace and enhance existing coating products that lack the hardness and toughness needed to withstand demanding forming processes and end-use conditions.

Highlights

- Flexibility & Hardness
- Abrasion Resistance
- Exterior & Interior / Commercial & Residential Applications

Ideal End Uses

- HVAC
- Appliances
- Office Furnishings
- Transportation Products
- Doors

Ceranamel XT-20

Ceranamel XT-20 (SMP) system offers outstanding long-term gloss and color retention. It is formulated with a proprietary high-durability polyester resin that is modified with silicone to enhance resistance to chalking and fading. This system balances pigmentation effectively, ensuring color stability while maintaining cost efficiency.

The durable yet flexible proprietary resin, along with its excellent performance in long-term exterior weathering, makes Ceranamel XT-20 coatings a cost-effective choice for exterior building components. It provides not only scratch and metal mark resistance but also the necessary flexibility for various applications.

Highlights

- High durability silicone-modified coating
- Good interior & exterior performance
- Commercial & residential applications

Ideal End Uses

- Commercial building components
- Residential building components
- Soffit & Facia

Ceranamel XT-10

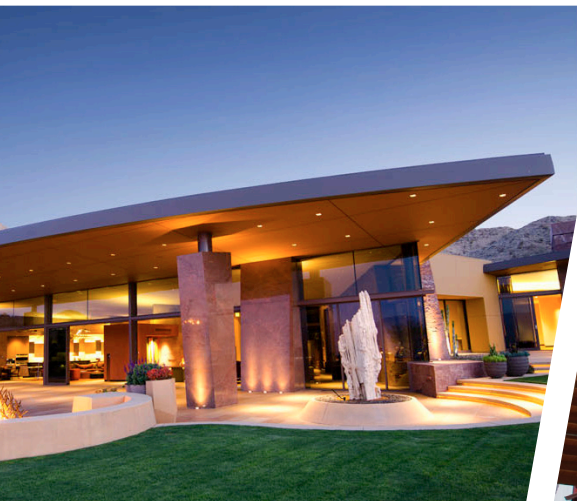
Ceranamel XT-10 polyester finishes offer a cost-effective solution for protecting both interior and exterior surfaces. This system is formulated with a unique composite polyester resin that resists UV degradation, which helps minimize chalking and fading over time. The Ceranamel XT-10 technology also enhances scratch resistance and reduces metal marking, making the coating durable yet flexible enough to be embossed and capable of withstanding a 2-T bend during roll forming.

Highlights

- X-10 Polyester
- Interior & Exterior Applications

Ideal End Uses

- Garage Entry Doors
- Window & Screen Frames
- Soffit & Facia



ZT Polyester

ZT Polyester coatings offer true zero-T flexibility for steel and aluminum, while maintaining a surface hardness rating of "H" or better. These coatings utilize a proprietary linear, high-molecular-weight polyester resin, which is specifically designed to deliver robust exterior durability, excellent stain resistance, and an optimal balance of physical properties. The ZT product line is available in a wide range of gloss finishes and a variety of standard and custom colors.

Highlights

- Tough, yet flexible
- Stain resistant
- Single or Two Coat Coverage

Ideal End Uses

- Screen & Door Frames
- T-Bar
- Closet Hardware
- Light Fixtures
- Office Furniture

DuraAcryl

DuraAcryl acrylic coil coating finishes offer superior flow, hardness, abrasion resistance, and stain resistance for challenging coil coating applications. The DuraAcryl acrylic coating system is suitable for both interior and exterior applications. DuraAcryl coatings can be modified to be wax-free or enhanced with a stain-resistant package that improves resistance to scratches and metal markings. This stain-resistant formulation offers exceptional protection against stains, while also permitting post-painting and decal applications.

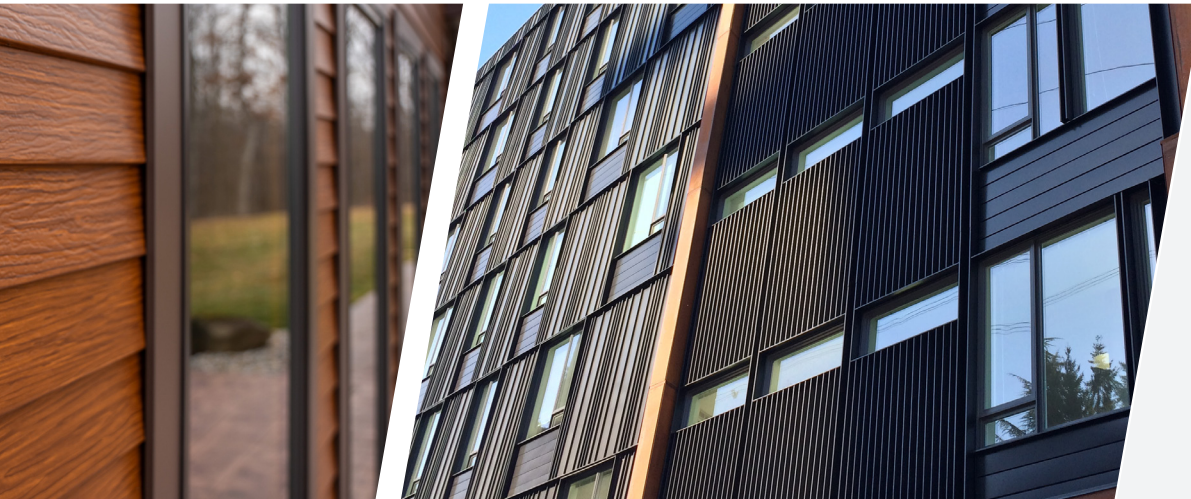
DuraAcryl finishes are specifically designed for application on primed hot-dipped galvanized steel, zinc-aluminum alloy steel (e.g., Zinalume®, Galvalume®), cold-rolled steel, and aluminum substrates. Available in a wide range of standard and custom colors and textures.

Highlights

- Flexible
- Stain Resistant
- Mar Resistant

Ideal End Uses

- Truck trailer
- Appliances
- Cargo trailer
- Sign stock



Simply scan the QR code or
visit **axalta.us/coil** for more information.



axalta.us/coil

AXALTA COATING SYSTEMS

Copyright © 2025 Axalta Coating Systems, LLC and all affiliates. All rights reserved. (08/25)

