



# AXALTA COATING SYSTEMS

## SUPPLIER REQUIREMENTS

**TABLE OF CONTENTS**

**Documentation .....3**

**COA .....3**

**Packing List .....3**

**Bill of Lading Requirements .....4**

**Container Marking & Requirements .....4**

    Bar Code Requirements .....4

**Packaging for Raw Materials .....5**

**Tank Wagon Requirements & Bulk Connections.....6**

**Distributor Requirements.....7**

**Changes, Silicone & Non-Conformances .....7**

**Plant Specific Requirements .....8**

    Front Royal .....8

    Ajax .....8

    Mount Clemens.....9

    Fort Madison .....9

    High Point.....10

    Cornwall.....10

    Sacramento.....10

    Houston .....11

    Hilliard .....11

**Invoice Information.....11**

**Appendix A – Separating Lots on Single Pallet .....12**

**Appendix B – Tank Wagon Valve Configurations .....13**

**Appendix C – ISO Tank Bulk Containers – MOUNT CLEMENS & FORT MADISION SPECIFIC .....14**

**Appendix D – ISO Container Vent– MOUNT CLEMENS & FORT MADISON SPECIFIC .....15**

**Appendix E – ISO Tank Bulk Containers – FRONT ROYAL SPECIFIC ..... 16**

**Appendix F – ISO Container Vent– FRONT ROYAL SPECIFIC ..... 17**

**Appendix G – Confirmation of Receipt.....18**

## **DOCUMENTATION**

ALL OF THE FOLLOWING ARE REQUIRED WITH EVERY DELIVERY:

1. A Packing List, Bill of Lading, and Certificate of Analysis MUST be attached to one of the incoming raw material containers.
2. A Packing List, Bill of Lading, and Certificate of Analysis MUST be in the driver's possession.
3. A copy of the COA MUST be emailed at least 24 hours prior to the scheduled shipment. The email subject line should contain the Axalta product code and lot number for each of the materials.
  - a. COA Dropbox requirements vary by site – Each are defined in the Plant Specific requirements sections below.

## **COA**

ALL RM COA REQUIREMENTS (BULK, NON-BULK Materials):

- Supplier Identification and Location (Production Site)
- Axalta Purchase Order Number
- Supplier's confirmation number
- Axalta Test Properties / Specifications
- Date of Certificate of Analysis
- Axalta Material Code Number
- Producer Trade Name
- Name and Phone Number of Contact Person
- Material Retest Date/Shelf Life
- Date of Manufacture
- Country of Origin
- Axalta Global Code Designation
- Supplier Lot or Batch Number
- Supplier Name for Material
- Test Results by Lot Number
- Type of container
- Container number (for Bulk)

PACKAGING MATERIALS COA REQUIREMENTS:

- Supplier Identification and Location (Production Site)
- Axalta Purchase Order Number
- Axalta Test Properties / Specifications
- Date of Certificate of Analysis
- Axalta Material Code Number
- Producer Trade Name
- Name and Phone Number of Contact Person
- Material Retest Date/Shelf Life
- Date of Manufacture
- Country of Origin

## **PACKING LIST**

ALL RM PACKING LIST REQUIREMENTS (BULK, NON-BULK Materials):

- Axalta Purchase Order
- Supplier's confirmation number
- Axalta Material Code
- Axalta Global Code Designation
- Container Type
- Container ID/Number
- Number of Containers
- Gross, Tare and Net Weights (individual container and total shipment), in pounds except as noted
- Chemical Name
- Supplier Lot Number
- H.M.I.S. Code
- Carrier Name
- Delivery Date

PACKAGING MATERIALS PACKING LIST REQUIREMENTS:

- Axalta Purchase Order and Release Number

- Axalta Material Code
- Axalta Global Code Designation
- Container Type
- Number of Containers

## **BILL OF LADING REQUIREMENTS**

ALL RM PACKING LIST REQUIREMENTS (BULK, NON-BULK Materials):

- Axalta Purchase Order
- Container ID / Number
- Axalta Material Code
- Axalta Global Code Designation
- Gross, Tare and Net Weights (individual container and total shipment), in pounds except as noted

## **CONTAINER MARKING & REQUIREMENTS**

CONTAINER MARKING REQUIREMENTS:

- Drums – 2” letters – two times on sides and once on top
- Bags – 1” letters – one time on end of bag
- Small kits, kegs-- 1” letters – one time on each side
- Cans, Pails—1” letters- one time on each side, on bottom edge of pallet

NON-BULK CONTAINER REQUIREMENTS:

- Gross, Tare and Net Weights, in pounds except as noted
- Supplier Lot Number
- Carrier Name
- H.M.I.S. Code
- Chemical Name & CAS Number
- Axalta Material Code
- Supplier's Product Code, Product Name & Trade Name
- Date of manufacture
- Material Retest Date/Shelf Life
- If product is sensitive to freezing include labels / stencils stating “Do Not Freeze” or appropriate symbols to that effect

PACKAGING CONTAINER REQUIREMENTS:

- Gross, Tare and Net Weights, in pounds except as noted
- Supplier Lot Number
- Carrier Name

BAR CODE REQUIREMENTS (NON-BULK, PACKAGING MATERIALS):

**The following are requirements for the MCL, Front Royal and Ajax sites and are preferred for all other Axalta sites.**

1. Label size – 6 inches wide by 8 inches high. Minimum 4 inch wide by 6 inches in length. Label should have a “glossy” surface to improve the ability to scan.
2. Bar code size/type – Item scan bar 1” minimum, code 128 or “3 of 9”
3. Text– human readable text must be black on white background and appear beneath the bar code. Text should be a minimum of ¼” high.
4. Item description- part number description should be placed below bar code on each item.
5. Global Code number text- should be placed above the bar code
6. Lot numbers –
  - a. Must be no greater than 10 characters.
  - b. Use the last 10 characters of the original lot number. If lot is less than 10 characters, use all of it.
7. Date- should be in the format of Month - Day - Year.
8. Quantity- The quantity must be a whole number, in pounds except as noted, and should equal the net weight of the container labeled, not the whole load. **Do not** include the unit of measure.

## **PACKAGING FOR RAW MATERIALS**

**\*\*All new materials and packaging changes require receiving plant approval before shipping into a plant.\*\***

1. LOT SEGREGATION- Shipments should consist of only one lot number per pallet. If more than one (1) lot number of a boxed/ pailed product is shipped on the same pallet, the product must be segregated by lot numbers by either shrink wrapping each lot or by separating each lot with cardboard or some other type of material. At all times, the product code and lot number must be visible on every exterior container. See *Appendix A* for approved stacking variations.
2. PRODUCT CODES – If more than one product code per pallet, the requirements for mixed pallets include separating products by cardboard, shrink wrap each product, label as mixed pallet.
3. CARGO TANKERS - vent caps/sample ports on top of Cargo Tankers must be affixed to wagon in order to avoid the lid becoming a projectile if the tank is under pressure.
4. All containers must be clean and free from contamination. Bags and FIBCs are not permitted to have fugitive product powder on the exterior surfaces.
5. DRUMS- Drums must be of new steel construction and self-relieving unless otherwise approved. No reconditioned drums are approved. Cardboard fiber drums / kegs are also acceptable for specified dry materials.
6. BOXES & BAGS – Individual containers not to exceed maximum weight of 55 pounds. Palletized bags and boxes are not allowed to over-hang the pallet and must be securely stacked to prevent shifting or leaning
7. SUPER SACKS (FIBCs) – Must comply with ANTI-STATIC & area safety guidelines, based on case by case review. If palletized FIBCs are stacked upon each other, the upper pallets must remain level through transporting allowing easy insertion of truck forks. Additional requirements listed in plant specific sections for Houston & Hilliard.
8. PORTABLE BULK CONTAINERS (IBCs) – Any materials shipped in IBCs need to be reviewed and preapproved by the site.
9. ANTI-STATIC- Suppliers must meet the following requirements:
  - a. “Anti-static” plastic must be used in any container where the raw material is in direct contact with the plastic. “Anti-static” is defined as having a surface resistivity of less than  $1 \times 10^{10}$  to the eleventh ohms/square at 23 degrees C and 20% relative humidity or having a charge decay rate from 5000 volts to 500 volts of less than 0.5 second when tested at 23 degrees C and 20% relative humidity. In all cases material data shall have been determined according to a recognized performance standard. (e.g. - A.S.T.M. D-257, I.E.C.-60093 or Method 4046 of Federal Test Method Standard 101C)
  - b. Flexible intermediate bulk containers (FIBCs or super sacks) must either be:
    - i. “Type C” conductive, groundable bags having a resistance to the grounding tab of less than  $1 \times 10^8$  to the eighth ohms when measured with a suitable surface electrode from any point on its surface. OR
    - ii. “Type D” static-dissipative bags, e.g. Chromiq Blue. Approval of a “Type D” bag other than the Chromiq Blue requires a special qualification test be conducted by a third party with test vapors having a MIE less than those that will be encountered at the users facility.
  - c. FIBCs with plastic liners must meet the specifications stated in both a) and b) listed above.
  - d. Anti-static packaging is to be marked “**ANTI-STATIC**” by the vender.
  - e. The packaging shall be labeled with documentation certifying that it meets the specification of one of the above referenced standards or such documentation shall be forwarded to the site for review.
10. WOODEN PALLETS- Suppliers must meet the following requirements:
  - a. Pallets shall be made of hardwood. No plastic pallets are permitted unless otherwise approved.
  - b. For requirements on exporting wood pallets (if destination is outside country of manufacture) refer to ISPM-15.
  - c. Parts must be free of decay or any defects that would materially weaken the piece or hinder proper fastening.
  - d. Nails shall be pointless or have blunt points flush with the pallet to eliminate risk of damage to materials on pallet.
  - e. Pallets of bagged material will not be higher than 5’ including the pallet.
  - f. Pallet size requirements vary by site – Each are defined in the Plant Specific requirements sections below.

## **TANK WAGON REQUIREMENTS & BULK CONNECTIONS**

1. Cargo tankers must have an opportunity for grounding.
2. Tank wagon Trailer must not exceed 3 compartments (Center Unloadable Wagon, Rear Unloadable Wagon, ISO tankers)
3. Liquid Fittings / Connections Required:
  - a. 3" Diameter MALE fittings.
  - b. Compatible with Kamlock quick connect for solvents and resins.
  - c. Compatible with Kamlock DRY Disconnect for Monomers.
    - i. Dry-disconnects must be screwed onto pipe work prior to loads arrival on site.
    - ii. One dry disconnect is required for each product code.
  - d. A hydraulic valve for samples must be on the same side, near the sample port.
  - e. Tank wagon must have a vent cap for unloading, compatible with vapor recovery.
  - f. Solvent/monomer wagons require a valve assembly that exits the tank at a 90 degree angle, to allow for safe and complete emptying. See Appendix B for acceptable valve configurations.
4. Vapor Recovery Fittings/ Connections Required:
  - a. 3" Diameter MALE fitting.
  - b. Compatible with Kamlock Quick Connect.
  - c. No bolted down man ways or hatches for venting.
5. Dedicated tank wagons for products are preferred.
6. For non-dedicated tanks, ensure correct cleaning methods are used, including bottom valve and closure of the tank. Correct cleaning methods include:
  - a) Caustic clean (no detergent), thorough rinsing and drying needed. Water insoluble compounds normally require chemical cleaning
  - b) External bottom valve and dome lid disassembled and cleaned / exchanged if possible
  - c) No reconditioned solvents for cleaning procedure
  - d) Trucks have to be dry, clean and free of any odor (end control)
7. For non-dedicated tanks, a cleaning certificate must be included for all tank wagons. The cleaning certificate must indicate the previous cargo.
8. Never use tank wagons for our deliveries that have been loaded before with:
 

• Cleaning products	• Amines	• Liquid Chalk	• Plasticizers incl. Phthalates
• Dispersants	• Antistatic agents	• Liquid Detergents, Fabric Softener	• Pump, Hydraulic Oils, Brake Fluids
• Emulsions Acrylic	• Bitumen	• Mercaptans	• Silicone compounds
• Epoxy based resins	• Biocides	• Molasses	• Substances with intensive Odors
• Slurries	• Colored Products	• Mould release agents / flow agents / mould drawing oils	• Surfactants
• Powder & dispersions	• Fluorinated lubricants materials	• Paraffin, waxes with high melting point	• Tars
• Strong Acids & Bases	• Grease, Lube Oils, Engine Oils	• Peroxides	• Used cooking oils and biodiesel
• Waxes	• Latex, Dispersions and Emulsions	• Phosphate, Phosphate ester	• Waste
• Adhesives			
9. Additional Bulk connection conditions are defined in the Plant Specific requirements sections below.

## **DISTRIBUTOR REQUIREMENTS**

For distributors, all supplier requirements contained within this document must be adhered to in addition to the following:

1. Two COA documents are required with each delivery 1) from the manufacturer and 2) from the distributor 2.  
All materials must be purchased through Axalta approved manufacturers only.
3. Only new containers will be accepted. **No reconditioned drums are approved.**
4. Distributors who purchase raw materials and re-containerize them into smaller containers, (i.e. portable tanks, drums, pails, are required to run some or all of the following tests depending on the safety handling requirements of the material (Axalta safety coded as S-0 to S-2):

Property/Test	Purpose:
Gas Chromatography	Solvent Qualitative Analysis
Refractive Index	Positive Identification
Filter Screen Test	Cleanliness
Water Content	On products going into water-sensitive formulations

## **CHANGES, SILICONE, & NON-CONFORMANCES**

1. All suppliers are required to give Axalta prior written notice of any and all changes to components, materials, processes, test methods, etc. as stated in Purchase Order Terms and Conditions
2. All suppliers are required to comply with the Silicone clause as stated in the Purchase Order Terms and Conditions 3.  
All non-conformances will be documented by Axalta and a notification sent to the supplier requiring response to Axalta in 24 hours. Details regarding documentation required and response time are included in the notification.
4. Axalta will issue a Supplier Corrective Action Request (SCAR) if any of the requirements contained in this and any other contractual agreement with Axalta are not met. A preliminary acknowledgment of the SCAR is mandatory and due back immediately. The completed SCAR is due back within 30 days of the date issued and must include results from a formal investigation of the reported defect and corrective actions in place to prevent reoccurrence.

## **PLANT SPECIFIC REQUIREMENTS**

### **FRONT ROYAL**

#### **RECEIVING HOURS**

7 days, 24 Hours a day

Office Hours 7:30 a.m. – 4:00 p.m.

#### **COA DROPBOX**

[FR-Supplier-COAs@axaltacs.com](mailto:FR-Supplier-COAs@axaltacs.com)

#### **BULK CONNECTIONS**

1. Cargo Tankers exceeding a height of 12'4" must obtain special approval prior to delivery
2. All ISO containers must have a space between the fender and tandem to allow for unloading line hookup. See Appendix E for acceptable configurations.
3. See Appendix F for acceptable vapor return or vent access pictures for ISO Containers.

#### **WOODEN PALLET size requirements:**

The following pallet sizes are required unless otherwise approved:

- Raw Materials- 44 X 48 pallets
- Finished Product- 42 x 42 stringer style pallet or a 48 x 44 stringer style pallet
- Automated depalletizing of Empty Cans- 44 x 56 block style pallets.
- Automated depalletizing of Empty Kits- 44 x 36 block style pallets or 46 x 36 stringer style pallets.
- Cartons- 42 X 42 pallets

#### **SHIPPING ADDRESS**

7961 Winchester Road Front

Royal, VA 22630

Attn: Packaging Warehouse

### **AJAX**

#### **RECEIVING HOURS**

1. Non-Bulk receiving hours are 6am – 6pm. In special cases, materials can be received until 8pm.
2. Bulk Receiving Hours are 6am-12noon.

#### **COA DROPBOX**

[Ajax.COA-s@axalta.com](mailto:Ajax.COA-s@axalta.com)

#### **WOODEN PALLET size requirements:**

The following pallet sizes are required unless otherwise approved:

- Raw Materials- 48 X 48 pallets
- Finished Product- 42 x 42 stringer style pallet or a 48 x 44 stringer style pallet
- Cartons- 42 X 42 pallets

#### **WEIGHT REQUIREMENTS**

All weights should be in kilograms, not pounds

#### **BULK CONNECTIONS**

1. Tank wagon Trailer can contain up to (but must not exceed) 4 compartments
2. 2" or 3" Diameter MALE fittings are acceptable for Vapor Recovery Fittings/ Connections.
3. Temperature requirements

Resin	Unloading Temp range – pump #3	Unloading Temp range – pump #5
G1270	125-140 °F	125-140 °F
RC7145	60-80 °F	60-80 °F
RC7193	127-140 °F	>127 °F

#### **SHIPPING ADDRESS**

408 Fairall Street

Ajax, Ontario, Canada

L1S 1R6



## MOUNT CLEMENS

### RECEIVING HOURS

1. NON-BULK- Receiving hours are **BY APPOINTMENT ONLY** (586-468-9360) -Monday through Friday 6:00 a.m. to 4:00 p.m. (unless special notification is made through Material Planner/Releasers).
2. BULK- Receiving hours are from 6:00 a.m. to 2:00 p.m. Monday through Fridays, unless other special arrangements have been made beforehand. After hours dropped tank wagons must abide by the following:
  - a. be placed at the bottom of the hill
  - b. be left with wheels UNCHOCKED
  - c. release the pressure in the air bags
  - d. Paperwork must be left in folder outside the office door.

### COA DROPBOX

[mt-clemens-supplier-coa@axaltacs.com](mailto:mt-clemens-supplier-coa@axaltacs.com)

### BULK CONNECTIONS

1. All fittings, valves, and gauges must be in proper working order
2. Driver must have all proper Personal Protective Equipment for the material they transport
3. After signing in driver MUST comply with all site safety requirements during their visit
4. ISO Tankers must have the threaded discharge outlet installed prior to arrival and must have vent installed on top of wagon. See Appendix D for ISO Container vent picture.
5. All resin tank wagon shipments must maintain a minimum temperature of 125 °F (52 °C) upon arrival to the site. Temperatures below this requirement may cause damage to our pumps.
6. All ISO containers must be delivered with a chassis that contains a 'v-cut', so that a sample can be pulled. See Appendix C for acceptable configurations.

### WOODEN PALLET size requirements:

The following pallet sizes are required unless otherwise approved:

- Raw Materials- 48 X 48 pallets
- Finished Product- 48 X 48 pallets

### SHIPPING ADDRESS

400 Groesbeck North Groesbeck HWY  
Mt Clemens, MI 48043  
Plant Phone Number: 586-468-9000

## FORT MADISON

### RECEIVING HOURS

1. NON – BULK - 8:30 a.m. to 4:00 p.m. Monday through Friday,
2. BULK – By Appointment.

### COA DROPBOX

[ft-madison-supplier-coa@axaltacs.com](mailto:ft-madison-supplier-coa@axaltacs.com)

### BULK CONNECTIONS

1. See Appendix C for acceptable ISO container configurations.
2. See Appendix D for acceptable ISO Container vent picture.

### WOODEN PALLET size requirements:

The following pallet sizes are required unless otherwise approved:

- Raw Materials- 48 X 48 pallets
- Supersacks – 38 X 40 or 42 X 42
- Finished Product- 42 x 42 stringer style pallet or a 48 x 44 stringer style pallet
- Cartons- 42 X 42 pallets

### PRODUCT CODES

Fort Madison will not accept mixed product codes per pallet.

### SHIPPING ADDRESS

803 35<sup>th</sup> Street  
Fort Madison, IA 52627

## HIGH POINT (Wood)

### RECEIVING HOURS

6 AM to 2 PM Monday – Thursday

5 AM to 11 AM Friday

### COA DROPBOX

Fax 336-802-4783

### WOODEN PALLET size requirements:

The following pallet sizes are required unless otherwise approved:

- Raw Materials- 48 X 48 pallets single runner with 2-way access and of hardwood construction
- Finished Product- 48 X 48 pallets single runner with 2-way access and of hardwood construction

### SHIPPING ADDRESS (manufacturing)

1717 English Road

Gate 7

High Point, NC 27262

## CORNWALL (Wood)

### RECEIVING HOURS

7 AM to 4:30 PM Monday – Friday

### COA DROPBOX

[angela.robertson@contractors.axaltacs.com](mailto:angela.robertson@contractors.axaltacs.com)

### WOODEN PALLET size requirements:

The following pallet sizes are required unless otherwise approved:

- Raw Materials- 48 X 48 pallets single runner with 2-way access and of hardwood construction
- Finished Product- 48 X 48 pallets single runner with 2-way access and of hardwood construction

### SHIPPING ADDRESS

1915 Second St W

Cornwall, ON K6H 5R6

Canada

## SACRAMENTO (Wood)

### RECEIVING HOURS

6:30 AM to 2 PM Monday – Friday

### COA DROPBOX

[kamal.singh@axaltacs.com](mailto:kamal.singh@axaltacs.com)

### WOODEN PALLET size requirements:

The following pallet sizes are required unless otherwise approved:

- Raw Materials- 48 X 48 pallets single runner with 2-way access and of hardwood construction
- Finished Product- 48 X 48 pallets single runner with 2-way access and of hardwood construction

### SHIPPING ADDRESS (manufacturing)

8201 Power Ride Road

Sacramento, CA 95826

HOUSTON

RECEIVING HOURS

7 AM – 5 PM Mon-Fri

COA DROPBOX

[certs.powder@axaltacs.com](mailto:certs.powder@axaltacs.com)

WOODEN PALLET size requirements:

The following pallet sizes are required unless otherwise approved:

- Raw Materials- 44 X 48 pallets

SUPER SACKS: Minimum TYPE B required.

SHIPPING ADDRESS 9800

Genard Road

Houston, TX 77041

Contact number: 713-429-7817

HILLIARD

RECEIVING HOURS

7 AM – 2:30 PM Mon-Fri

COA DROPBOX

[certs.powder@axaltacs.com](mailto:certs.powder@axaltacs.com)

WOODEN PALLET size requirements:

The following pallet sizes are required unless otherwise approved:

- Raw Materials- 44 X 48 pallets

SUPER SACKS: Minimum TYPE B required.

SHIPPING ADDRESS 4130

Lyman Dr

Hilliard, OH 43026

Contact number - 614-777-7223

**ALL INVOICES SEND TO:**

**UNITED STATES:** *Axalta Coating Systems, LLC*

Fax: **302-861-3922**  
(preferred method of receipt)

Invoice submittal  
address: Attention: Accounts Payable  
Axalta Coating Systems, LLC  
P.O. Box 69  
Glen Mills, PA 19342-0069

Customer Service Inquiries Only: [AP18@axaltacs.com](mailto:AP18@axaltacs.com)

**CANADA:** *Axalta Coating Systems Canada Company*

Fax: **416-981-3364**  
(preferred method of receipt)

Invoice submittal  
address: Attention: Accounts Payable  
Axalta Coating Systems, LLC  
408 Fairall Street  
Ajax, Ontario L1S 1R6

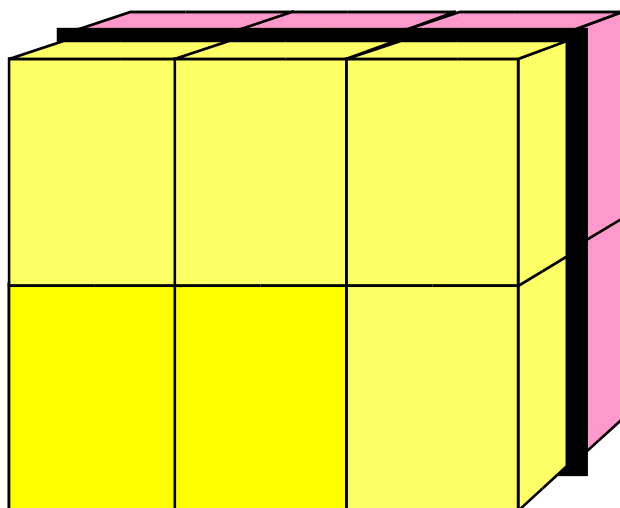
Customer Service Inquiries Only: [Axalta-CA-AP@axaltacs.com](mailto:Axalta-CA-AP@axaltacs.com)

To send invoices via email: [email-axalta@axaltacs.com](mailto:email-axalta@axaltacs.com)

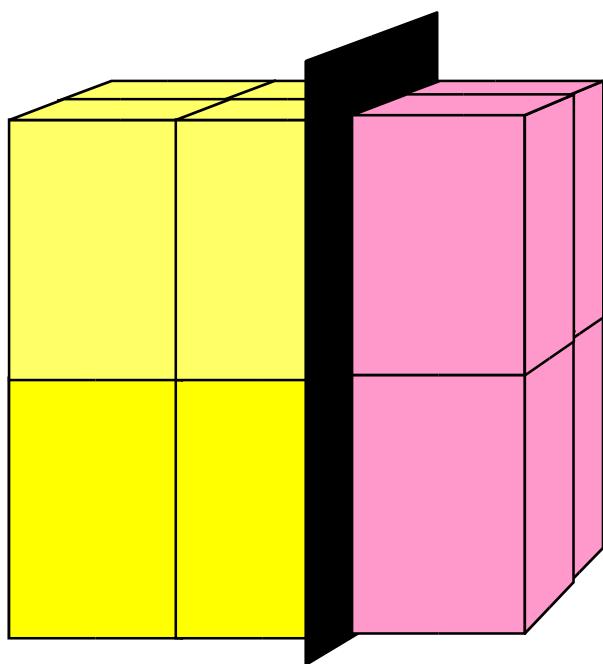
\*\*\*\*\*Please note email has a 5 invoice limit and a file size limitation of 5 MB\*\*\*\*\*  
**US & Canada Helpdesk telephone #: 877-567-5431**

## Appendix A – Separating Lots on Single Pallet

No more than 2 lots per pallet **Lot “X”**

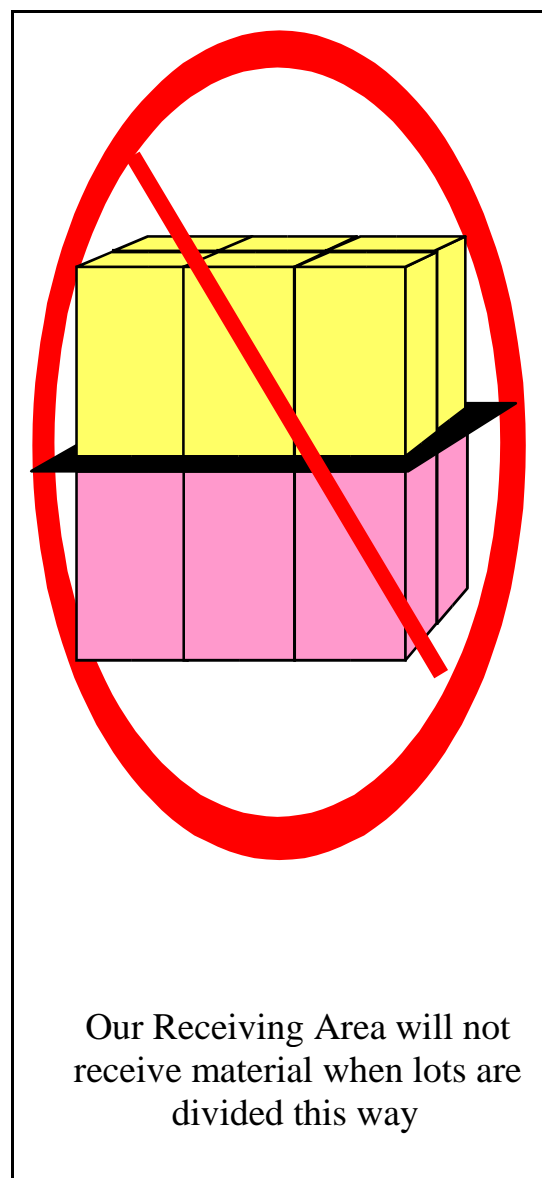


 **Lot “Y”**  
 **Cardboard**  

**NOTE:**

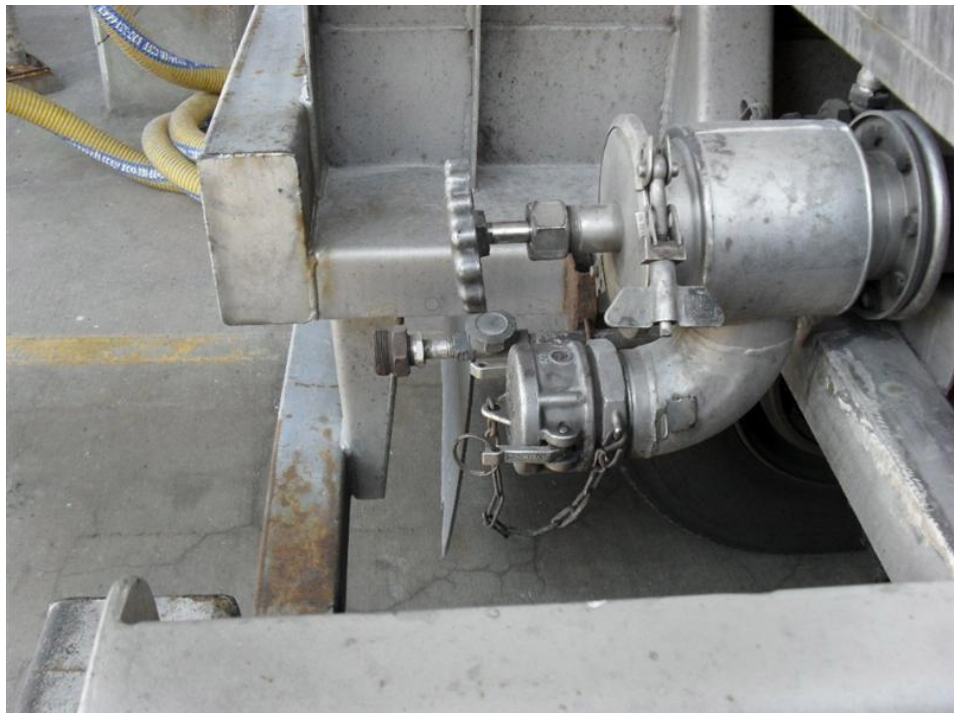
**Bag stock and Super sacks are limited to one lot per pallet only!**



## Appendix B – Tank Wagon Valve Configurations



45 degree valve configurations are unacceptable



90 Degree valve configurations are acceptable



## Appendix C – ISO Tank Bulk Containers – MOUNT CLEMENS & FORT MADISON SPECIFIC REQUIREMENT

All ISO containers must be delivered with a chassis that contains a ‘v-cut’, so that a sample can be pulled. The 3” male Kamlock assembly must be in place upon arrival. Failure to meet either requirement may result in immediate rejection of the container.



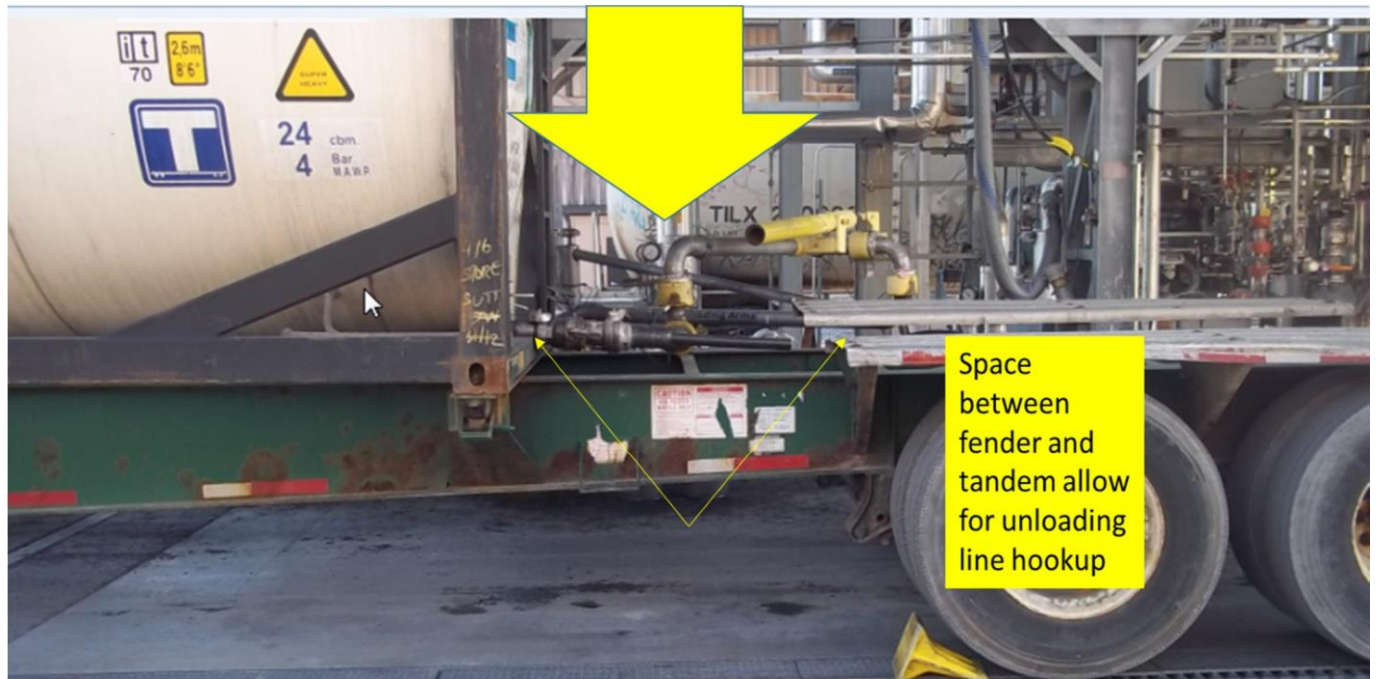
**Appendix D – ISO Container Vent –**  
**MOUNT CLEMENS & FORT MADISON SPECIFIC REQUIREMENT**



Container vent

Top View of Wagon vent. Vent needs to be installed before delivery.





This setup allows for unloading assembly hookup without having to use flexible hoses.



Overhead view



**Appendix F – ISO Container Vent –**  
**FRONT ROYAL SPECIFIC REQUIREMENT**



Acceptable vapor return or vent access



**Confirmation of Receipt**

By signing below, the supplier is confirming receipt and understanding of Axalta’s ***Supplier Requirements*** document. Additionally, this information has been shared with all relevant members of the supplier’s organization.

Your Company Name	
Supplier Contact Name (Printed)	
Supplier Contact Title	
Supplier Contact Signature	
Date	

Upon completion, please provide a completed and signed copy of this form to your Axalta Procurement contact.