

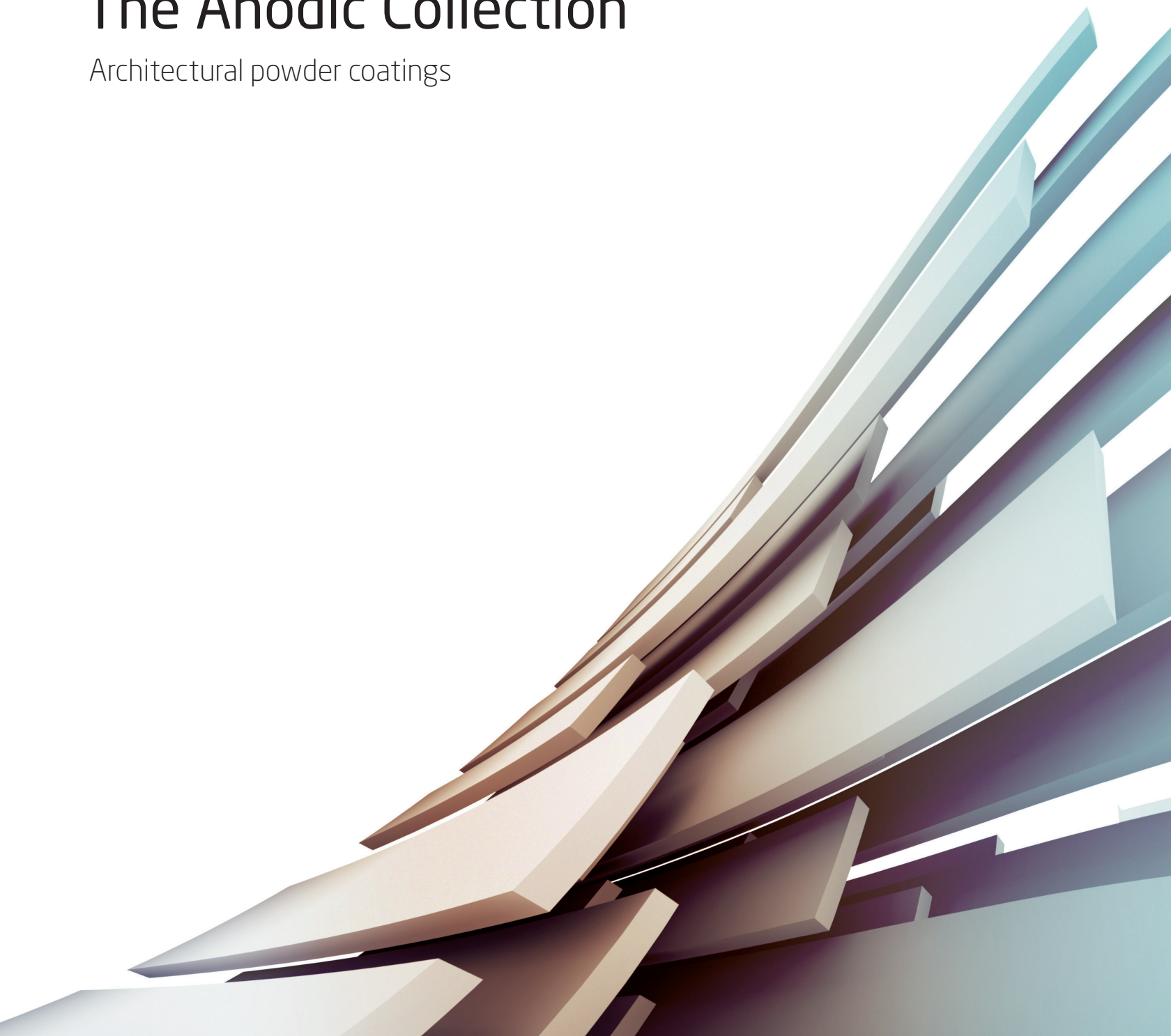
AXALTA COATING SYSTEMS



Alesta®

The Anodic Collection

Architectural powder coatings



The Anodic Collection

The Alesta® AR Anodic line offers the appearance and color shades of standard anodized finishes with all the benefits associated with a powder coating.

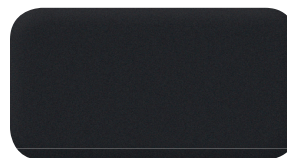
The Anodic collection offers the effect of standard anodized finishes in a range of colors closely simulating the more popular anodic shades, while offering the durability and weatherability meeting AAMA 2603, 2604 & 2605 standards.

Anodics can be applied to a wide array of substrates including aluminium and steel profile extrusions, cladding or sheet panels; creating a uniform "anodized" look, impossible to obtain via chemical anodization.

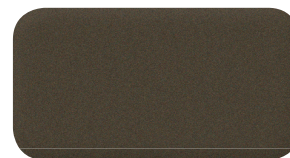
Furthermore the Anodic line provides a higher level of color consistency than traditional chemical anodization, as well as batch to batch consistency while effectively hiding surface defects on aluminium profiles.

Highlights:

- Meets or exceeds AAMA 2603, 2604, and 2605 requirements
- Very low gloss
- Excellent flow
- Special smooth appearance with metallic effect
- Can be cured at 400°F
- Wide variety of substrates in aluminium and steel
- Covers potential surface defects
- Uniform color match, batch after batch
- Excellent durability and color stability
- Easy application
- No surface hardening, less sensitive to stress cracking
- Low environmental impact



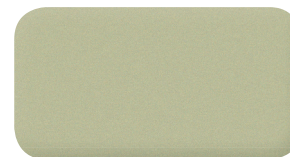
ANODIC BLACK
HFB2100B2 (AR300)



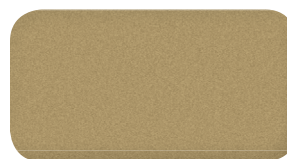
ANODIC BROWN
HFJ2100B2 (AR300)



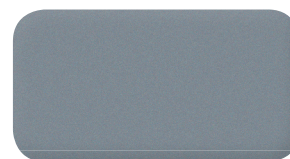
ANODIC BRONZE
HFJ2101B2 (AR300)



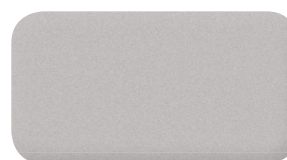
ANODIC CHAMPAGNE
HFT2100B2 (AR300)



ANODIC GOLD
AE201110008 (AR300)



ANODIC SAPPHIRE
HFK2100B1 (AR300)



ANODIC NATURA
HFH2101B2 (AR300)
CFA601B1 (AR400)



ANODIC MALACHITE
HFG2100B2 (AR300)

