

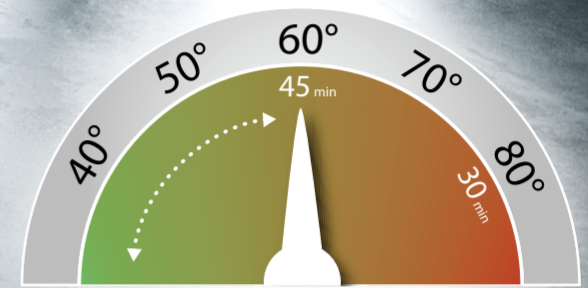
# WORKING ON AN ELECTRIC VEHICLE (EV)?



© 2021 Axalta Coating Systems. All rights reserved.

## THESE ARE THINGS YOU NEED TO THINK ABOUT...

**General Recommendation: drying temperature must stay below 60°C and cannot exceed 45 min. If in doubt, contact the vehicle manufacturer for detailed information.**



### BEFORE YOU START:

|                           |  |  |
|---------------------------|--|--|
| <b>1. Assessment</b>      | Only qualified personnel are permitted to work on HV vehicles.   | <ul style="list-style-type: none"> <li>Observe country specific electric vehicle safety regulations (e.g. DGUV 209-93)</li> <li>Observe the specifications of the respective vehicle manufacturer**</li> </ul> |
| <b>2. Classification</b>  | <b>Classify as one of the following:</b> <ul style="list-style-type: none"> <li>Electric vehicle HV</li> <li>Fuel cell vehicle</li> <li>Hybrid</li> </ul>  |  |
| <b>3. Risk assessment</b> | <b>Check for:</b> <ol style="list-style-type: none"> <li>Evidence of fire</li> <li>Detectable sparks, smoke or steam</li> <li>Noise from battery, e.g. crackling</li> <li>Acrid odour</li> <li>Fluid leaks from or in battery</li> <li>Severe mechanical damage to battery</li> <li>Continuous temperature measurement (&lt;60°C)</li> </ol> | <ul style="list-style-type: none"> <li>Vehicle pre-check measurement technology: Release for repair? Yes/No.</li> <li>Visual inspection: Release for repair? Yes/no.</li> </ul>                                |
| <b>4. Repair release</b>  | <b>Decide:</b><br>✓ Vehicle can be repaired without risk    ✗ Vehicle cannot be released   | <ul style="list-style-type: none"> <li>Send the vehicle to the workshop*</li> <li>Vehicle must be placed in a quarantine area</li> </ul>   |

### WHILE SPRAYING:

|                            |   |  |  |
|----------------------------|---|--|--|
| <b>1. Preliminary work</b> | <ul style="list-style-type: none"> <li>Only qualified personnel should drive the vehicle (e.g. in the workshop)</li> <li>HV system can only be deactivated for the pending repair work by a qualified person</li> </ul> | <ul style="list-style-type: none"> <li>Work on voltage-free bodies (body/mechanics/paint) can now be carried out by qualified personnel</li> </ul>       | Observe vehicle manufacturer current specifications for loading, lifting and manoeuvring** |
| <b>2. Painting/prep</b>    | <ul style="list-style-type: none"> <li>Battery temperature: &lt;30°C.</li> <li>Battery charge status: min 45%</li> </ul>  | <ul style="list-style-type: none"> <li>Remove ignition key (do not switch on aircon system)</li> <li>Lower the windows to avoid heat build-up</li> </ul> | Observe the specifications of the vehicle manufacturer**                                   |
| <b>3. Painting/drying</b>  | If possible, use Ultra Performance Energy System. Drying temperature must stay below 60°C and cannot exceed 45 min.   |  |  |
| <b>4. Reassembly</b>       | Assembly work after painting must be done by qualified personnel. Recommissioning and acceptance only by qualified personnel.   |  |  |

### ON COMPLETION:

|                             |   |   |
|-----------------------------|---|---|
| <b>Finishing</b>            | Must be done by qualified personnel.                                  | Observe vehicle manufacturer specifications** |
| <b>Handover to customer</b> | Charging battery and manoeuvring must be done by qualified personnel. |   |

\* Only after instruction by a qualified person    \*\* Vehicle manufacturer specifications must always be up-to-date

## ALL THE EV TOOLS YOU NEED

For the specialist tools you need, check out our non-paint portfolio. Contact your local sales representative to find out more.

## REMEMBER!

- Only qualified personnel may work on EVs
- Only trained personnel (according to local requirements) should de/reactivate high voltage
- Observe country specific electric vehicle safety regulations (e.g. DGUV 209-93)
- Make sure cabin temperature is set correctly – use an I.R. thermometer to check
- Do not exceed baking time and temperature
- Comply with general EV safety rules:
  - Ensure that the vehicle cannot be switched on accidentally
  - Check there is no electrical charge or load
- Wear personal protective equipment (PPE):
  - Insulating gloves DIN 60903 Class 0
  - Face shield IEC 61582-1-2
  - Safety glasses EN 166
  - Safety shoes with electrically insulating soles EN 20345

Find out more at:  
[axalta.eu/e-car-repair](http://axalta.eu/e-car-repair)



### USE THE ULTRA PERFORMANCE ENERGY SYSTEM – SPECIALLY DESIGNED FOR LOW TEMPERATURE CURING

Save money and energy by choosing Ultra Performance Energy System paints – because they dry fast even at low temperatures. All Cromax basecoats, 2K topcoats and clears are EV compatible.

#### Ultra Performance Energy System

- CC6750 Ultra Performance Energy Clear
- Cromax Pro Basecoat
- PS1081 – PS1084 – PS1087 Ultra Performance Energy Surfacers
- NS2081 – NS2084 – NS2087 Ultra Performance Non-Sanding Surfacers
- PS1800 Metal Pre-treatment Wipes

