

AXALTA COATING SYSTEMS



Alesta® / Teodur®

Stock Products 2017

**We put our
customer first**

**We are driven
to perform better
each day**

**We take ownership
in everything we do**

**We innovate
with purpose**

**We succeed as a
united global team**

Stock Products 2017

You can place your order by telephone, fax or email.

Please mention the item codes exactly as they appear in this catalogue.

**Willibald Schmidt**

Sales Manager Austria,
Central Europe & SEE
Mobil: +43 66 46 21 56 13
Tel. +43 22 36 50 03 97
Fax +43 22 36 50 03 99
Mail: Willibald.Schmidt@axaltacs.com

**Radek Janda**

Sales Manager Powder Coating
Central Europe
Mobil: +420 72 43 70 790
Tel. +43 22 36 50 03 97
Fax +43 22 36 50 03 99
Mail: Radek.Janda@axaltacs.com

**Irena Perinova**

Sales Representative CZ, SK & HU
Mobil: +420 72 48 11 158
Tel. +43 22 36 50 03 97
Fax +43 22 36 50 03 99
Mail: Irena.Perinova@axaltacs.com

**Michal Kostun**

Sales Representative CZ & SK
Mobil: +420 70 22 10 554
Tel. +43 22 36 50 03 97
Fax +43 22 36 50 03 99
Mail: Michal.Kostun@axaltacs.com

**Jan Kamenar**

Application Engineer Central Europe
Mobil: +43 66 46 21 56 17
Tel. +43 22 36 50 03 97
Fax +43 22 36 50 03 99
Mail: Jan.Kamenar@axaltacs.com



Responsible for:

**Veronika Pospisilova**

Sales Office Team Leader
Tel. +43 22 36 50 03 49
Fax +43 22 36 50 03 99
Mail: Veronika.Pospisilova@axaltacs.com



Responsible for:

**Denise Wilfinger**

Sales Office
Tel. +43 22 36 50 02 36
Fax +43 22 36 50 03 99
Mail: Denise.Wilfinger@axaltacs.com



Responsible for:

**Andrea Gabbichler**

Sales Office
Tel. +43 22 36 50 03 97
Fax +43 22 36 50 03 99
Mail: Andrea.Gabbichler@axaltacs.com



Responsible for:

**Kevin Polszter**

Sales Office
Tel. +43 22 36 50 03 60
Fax +43 22 36 50 03 99
Mail: Kevin.Polszter@axaltacs.com



Stock Products 2017

Visit our website: www.powder.axaltacs.com

Where you'll find more information on powder coatings: technical information, collections, technical data sheets etc ...

Is the product you want to order not included in our catalogue?

Please note that we can supply almost any colour on request: Sikkens, NCS, Pantone ...

If you want to reproduce a colour based on a sample, please send us your sample.

You need sample panels?

www.alestacolourit.com



WWW.ALESTACOLOURIT.COM

Index

Stock Products 2017	1
Colour it with spirit	2
Explanation of encoding	4

Architectural Powder Coatings **5**

The Matt Collection	GSB Standard & Qualicoat Class I	6
The Matt Collection Specials	GSB Standard & Qualicoat Class I	11
The Semi-Gloss Collection	GSB Standard & Qualicoat Class I	12
The Semi-Gloss Collection Specials	GSB Standard & Qualicoat Class I	17
The High-Gloss Collection	GSB Standard & Qualicoat Class I	18
The High-Gloss Collection Specials	GSB Standard & Qualicoat Class I	23
The Fine Textured Collection	GSB Standard & Qualicoat Class I	24
The Fine Textured Collection Specials	GSB Standard & Qualicoat Class I	29
SuperDurable	GSB Master & Qualicoat Class II	30
The Timeless Collection	GSB Standard + Master & Qualicoat Class I + II	32
The Pearl Collection	GSB Standard & Qualicoat Class I	34
The Star Collection	GSB Standard & Qualicoat Class I	36
The Anodic Collection	GSB Standard & Qualicoat Class I	39
The Iconica Collection NEW	GSB Master & Qualicoat Class II	40
The Architects Edition	GSB Master & Qualicoat Class II	43
The Earth Selection NEW	GSB Standard & Qualicoat Class I	44
The Eloxal Selection NEW	GSB Master & Qualicoat Class II	45
Metallic effect powder coatings		46

Industrial Powder Coatings **51**

The Inside Collection		52
The Industrial Collection		56
Anti-Gassing Low Bake		58
Industrial High Gloss		60
Industrial Specials		61
Epoxy Polyester High-Gloss		62
Epoxy Polyester Matt		64
Epoxy Polyester Leatherette - Fine Textured		65
Epoxy Polyester Specials		65

Divers

The Black & White Collection		66
The Job Coater Collection		68
Alesta® ZeroZinc Primer		70
Primer		71
Light Industry		72
Wheel Refurbishment		73
Automotive		74
Clear coat		74
Alesta® SoftTouch		75
Heat Resistant		76
Repair Systems		77

Explanation of encoding





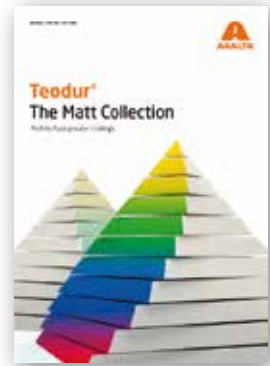
Architectural Powder Coatings

Alesta[®]
Powder Coatings

Teodur[®]
Powder Coatings

Barco Courtrai,
Courtesy of Boddeteem,
Belgium

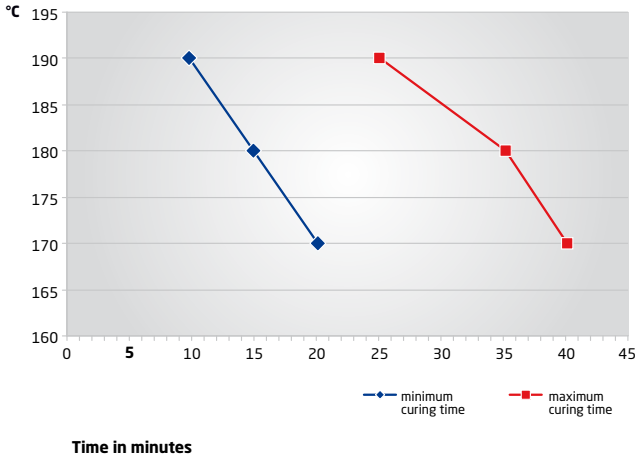
The Matt Collection



A range of architectural polyester powder coatings specially for aluminum and galvanized steel applications. It has a variety of 190 RAL colours, including a bonded version of \pm RAL 9006 & 9007 with a gloss level of 30GU.

- 190 RAL-colours in stock
- Excellent flow properties
- Good scratch resistance
- Excellent weather resistance
- Gloss: 30GU at 60° (\pm 5GU)
- GSB and Qualicoat approved

Curing Schedule Alesta® AP AE Matt



minimum curing time	maximum curing time	Temperatur °C
20	40	170
15	35	180
10	25	190

The Matt Collection

Description: matt, smooth
GSB Standard & Qualicoat Class I

RAL	Colour Description	Gloss	Product Code	Material Code	Unit	Stock
RAL 1000	Green beige	30 ±/60°	AE30011100020	2025015020094	20 kg	SK
RAL 1001	Beige	30 ±/60°	AE30011100120	2025013493098	20 kg	SK
RAL 1002	Sand yellow	30 ±/60°	AE30011100220	2025015029097	20 kg	SK
RAL 1003	Signal yellow	30 ±/60°	AE30011100320	2025015023095	20 kg	SK
RAL 1004	Golden yellow	30 ±/60°	AE30011100420	2025001670098	20 kg	SK
RAL 1005	Honey yellow	30 ±/60°	AE30011100520	2025015026096	20 kg	SK
RAL 1006	Maize yellow	30 ±/60°	AE30011100620	2025015028090	20 kg	SK
RAL 1007	Daffodil yellow	30 ±/60°	AE30011100720	2025015027093	20 kg	DE
RAL 1011	Brown beige	30 ±/60°	AE300C1101120	2023003193096	20 kg	SK
RAL 1013	Oyster white	30 ±/60°	AE30011101320	2025004877098	20 kg	SK
RAL 1014	Ivory	30 ±/60°	AE30011101420	2025015030093	20 kg	SK
RAL 1015	Light ivory	30 ±/60°	AE30011101520	2025000421097	20 kg	SK
RAL 1016	Sulfur yellow	30 ±/60°	AE30011101620	2025004725092	20 kg	SK
RAL 1017	Saffron yellow	30 ±/60°	AE300C1101720	2023003194093	20 kg	SK
RAL 1018	Zinc yellow	30 ±/60°	AE30011101820	2025015021091	20 kg	SK
RAL 1019	Grey beige	30 ±/60°	AE30011101920	2026000510095	20 kg	SK
RAL 1020	Olive yellow	30 ±/60°	AE30011102020	2025004740095	20 kg	SK
RAL 1021	Colza yellow	30 ±/60°	AE300C1102120	2023003195090	20 kg	SK
RAL 1023	Traffic yellow	30 ±/60°	AE300C1102320	2023003196097	20 kg	SK
RAL 1024	Ochre yellow	30 ±/60°	AE300C1102420	2023003197094	20 kg	DE
RAL 1028	Melon yellow	30 ±/60°	AE30011102820	2025015025099	20 kg	SK
RAL 1032	Broom yellow	30 ±/60°	AE30011103220	2025004736098	20 kg	DE
RAL 1033	Dahlia yellow	30 ±/60°	AE30011103320	2025004742099	20 kg	SK
RAL 1034	Pastel yellow	30 ±/60°	AE30011103420	2025000161092	20 kg	DE
RAL 2000	Yellow orange	30 ±/60°	AE30012200020	2025015032097	20 kg	SK
RAL 2001	Red orange	30 ±/60°	AE30012200120	2025004809099	20 kg	SK
RAL 2002	Vermilion	30 ±/60°	AE30012200220	2025015036095	20 kg	DE
RAL 2003	Pastel orange	30 ±/60°	AE300C2200320	2023003198091	20 kg	SK
RAL 2004	Pure orange	30 ±/60°	AE30012200420	2022005934096	20 kg	SK
RAL 2008	Bright red orange	30 ±/60°	AE30012200820	2025015033094	20 kg	SK
RAL 2009	Traffic orange	30 ±/60°	AE30012200920	2025015035098	20 kg	DE
RAL 2010	Signal orange	30 ±/60°	AE30012201020	2025015034091	20 kg	SK
RAL 2011	Deep orange	30 ±/60°	AE300C2201120	2023003199098	20 kg	DE
RAL 3000	Flame red	30 ±/60°	AE30013300020	2025000181090	20 kg	SK
RAL 3001	Signal red	30 ±/60°	AE30013300120	2025004695098	20 kg	SK
RAL 3002	Carmine red	30 ±/60°	AE30013300220	2025015039096	20 kg	SK
RAL 3003	Ruby red	30 ±/60°	AE30013300320	2025015041099	20 kg	SK
RAL 3004	Purple red	30 ±/60°	AE30013300420	2025000190092	20 kg	SK
RAL 3005	Wine red	30 ±/60°	AE30013300520	2025004716090	20 kg	SK
RAL 3007	Black red	30 ±/60°	AE30013300720	2025000197091	20 kg	SK
RAL 3009	Oxide red	30 ±/60°	AE30013300920	2025001672092	20 kg	SK

RAL	Colour Description	Gloss	Product Code	Material Code	Unit	Stock
RAL 3011	Brown red	30 \pm 60°	AE30013301120	2025004709092	20 kg	SK
RAL 3012	Beige red	30 \pm 60°	AE30013301220	2025004692097	20 kg	SK
RAL 3013	Tomato red	30 \pm 60°	AE300C3301320	2023003200091	20 kg	SK
RAL 3014	Antique pink	30 \pm 60°	AE30013301420	2025004698099	20 kg	DE
RAL 3015	Light pink	30 \pm 60°	AE300C3301520	2023003201098	20 kg	DE
RAL 3016	Coral red	30 \pm 60°	AE30013301620	2025004704097	20 kg	SK
RAL 3017	Rose	30 \pm 60°	AE30013301720	2025004693094	20 kg	DE
RAL 3018	Strawberry red	30 \pm 60°	AE300C3301820	2023003202095	20 kg	DE
RAL 3020	Traffic red	30 \pm 60°	AE30013302020	2021004761092	20 kg	SK
RAL 3022	Salmon pink	30 \pm 60°	AE300C3302220	2023003203092	20 kg	DE
RAL 3027	Raspberry red	30 \pm 60°	AE30013302720	2025004688090	20 kg	DE
RAL 3028	Pure red	30 \pm 60°	AE30013302820	2027011656093	20 kg	DE
RAL 3031	Orient red	30 \pm 60°	AE30013303120	2025004694091	20 kg	DE
RAL 4001	Red lilac	30 \pm 60°	AE30013400120	2025004690093	20 kg	DE
RAL 4002	Red violet	30 \pm 60°	AE30013400220	2025016453099	20 kg	DE
RAL 4004	Claret violet	30 \pm 60°	AE30013400420	2025015043093	20 kg	DE
RAL 4005	Blue lilac	30 \pm 60°	AE30013400520	2025015047091	20 kg	DE
RAL 4006	Traffic purple	30 \pm 60°	AE300C3400620	2023003204099	20 kg	DE
RAL 4007	Purple violet	30 \pm 60°	AE300C3400720	2023003205096	20 kg	DE
RAL 4008	Signal violet	30 \pm 60°	AE30013400820	2025004700099	20 kg	DE
RAL 4009	Pastel violet	30 \pm 60°	AE300C3400920	2023003206093	20 kg	DE
RAL 4010	Telemagenta	30 \pm 60°	AE30013401020	2027011992092	20 kg	DE
RAL 5000	Violet blue	30 \pm 60°	AE30015500020	2025000217096	20 kg	SK
RAL 5001	Green blue	30 \pm 60°	AE300C5500120	2023003207090	20 kg	SK
RAL 5002	Ultramarine blue	30 \pm 60°	AE30015500220	2025000219090	20 kg	SK
RAL 5003	Sapphire blue	30 \pm 60°	AE300C5500320	2023003208097	20 kg	SK
RAL 5004	Black blue	30 \pm 60°	AE30015500420	2025015058097	20 kg	DE
RAL 5005	Signal blue	30 \pm 60°	AE30015500520	2025004781098	20 kg	SK
RAL 5007	Brilliant blue	30 \pm 60°	AE30015500720	2025002007091	20 kg	SK
RAL 5008	Grey blue	30 \pm 60°	AE300C5500820	2023003209094	20 kg	DE
RAL 5009	Azure blue	30 \pm 60°	AE30015500920	2025015051098	20 kg	DE
RAL 5010	Gentian blue	30 \pm 60°	AE30015501020	2025015048098	20 kg	SK
RAL 5011	Steel blue	30 \pm 60°	AE300C5501120	2023003210090	20 kg	SK
RAL 5012	Light blue	30 \pm 60°	AE30015501220	2025000205093	20 kg	SK
RAL 5013	Cobalt blue	30 \pm 60°	AE300C5501320	2023003211097	20 kg	DE
RAL 5014	Pigeon blue	30 \pm 60°	AE300C5501420	2023003212094	20 kg	SK
RAL 5015	Sky blue	30 \pm 60°	AE30015501520	2025000207097	20 kg	SK
RAL 5017	Traffic blue	30 \pm 60°	AE30015501720	2025015050091	20 kg	SK
RAL 5018	Turquoise blue	30 \pm 60°	AE30015501820	2025000202092	20 kg	SK
RAL 5019	Capri blue	30 \pm 60°	AE30015501920	2025015049095	20 kg	SK
RAL 5020	Ocean blue	30 \pm 60°	AE30015502020	2025015056093	20 kg	DE
RAL 5021	Water blue	30 \pm 60°	AE30015502120	2025000210097	20 kg	SK
RAL 5022	Night blue	30 \pm 60°	AE30015502220	2025015054099	20 kg	SK
RAL 5023	Distant blue	30 \pm 60°	AE300C5502320	2023003213091	20 kg	SK
RAL 5024	Pastel blue	30 \pm 60°	AE30015502420	2025015046094	20 kg	SK
RAL 6000	Patina green	30 \pm 60°	AE30016600020	2025000245099	20 kg	SK

RAL	Colour Description	Gloss	Product Code	Material Code	Unit	Stock
RAL 6001	Emerald green	30 ±/60°	AE300C6600120	2023003214098	20 kg	SK
RAL 6002	Leaf green	30 ±/60°	AE30016600220	2025001634090	20 kg	SK
RAL 6003	Olive green	30 ±/60°	AE300C6600320	2023003215095	20 kg	SK
RAL 6004	Blue green	30 ±/60°	AE300C6600420	2023003216092	20 kg	SK
RAL 6005	Moss green	30 ±/60°	AE300C6600520	2023003217099	20 kg	SK
RAL 6006	Grey olive	30 ±/60°	AE300C6600620	2023003218096	20 kg	SK
RAL 6007	Bottle green	30 ±/60°	AE30016600720	2025015066092	20 kg	SK
RAL 6008	Brown green	30 ±/60°	AE30016600820	2025000273092	20 kg	DE
RAL 6009	Fir green	30 ±/60°	AE30016600920	2025000271098	20 kg	SK
RAL 6010	Grass green	30 ±/60°	AE30016601020	2025004830093	20 kg	SK
RAL 6011	Reseda green	30 ±/60°	AE300C6601120	2023003219093	20 kg	SK
RAL 6012	Black green	30 ±/60°	AE30016601220	2025000265097	20 kg	SK
RAL 6013	Reed green	30 ±/60°	AE30016601320	2025015061097	20 kg	SK
RAL 6014	Yellow olive	30 ±/60°	AE30016601420	2025005013099	20 kg	SK
RAL 6015	Black olive	30 ±/60°	AE30016601520	2025004848098	20 kg	DE
RAL 6016	Turquoise green	30 ±/60°	AE30016601620	2025013477098	20 kg	DE
RAL 6017	May green	30 ±/60°	AE300C6601720	2023003220099	20 kg	SK
RAL 6018	Yellow green	30 ±/60°	AE300C6601820	2023003221096	20 kg	SK
RAL 6019	Pastel green	30 ±/60°	AE300C6601920	2023003222093	20 kg	SK
RAL 6020	Chrome green	30 ±/60°	AE30016602020	2025000256095	20 kg	SK
RAL 6021	Pale green	30 ±/60°	AE30016602120	2022005937097	20 kg	SK
RAL 6022	Olive drab	30 ±/60°	AE30016602220	2025016430090	20 kg	DE
RAL 6024	Traffic green	30 ±/60°	AE30016602420	2025001633093	20 kg	SK
RAL 6025	Fern green	30 ±/60°	AE30016602520	2025000250093	20 kg	SK
RAL 6026	Opal green	30 ±/60°	AE30016602620	2025004836095	20 kg	SK
RAL 6027	Light green	30 ±/60°	AE30016602720	2025015044090	20 kg	SK
RAL 6028	Pine green	30 ±/60°	AE30016602820	2021004754094	20 kg	DE
RAL 6029	Mint green	30 ±/60°	AE30016602920	2025015065095	20 kg	SK
RAL 6031	Bronze green	30 ±/60°	AE30016870625	2025000267091	20 kg	DE
RAL 6032	Signal green	30 ±/60°	AE30016603220	2025004827093	20 kg	DE
RAL 6033	Mint turquoise	30 ±/60°	AE30016603320	2025004826096	20 kg	SK
RAL 6034	Pastel turquoise	30 ±/60°	AE30016603420	2025015060090	20 kg	DE
RAL 6037	Pure green	30 ±/60°	AE30016603720	2027011655096	20 kg	DE
RAL 7000	Squirrel grey	30 ±/60°	AE30017700020	2025015073090	20 kg	DE
RAL 7001	Silver grey	30 ±/60°	AE30017700120	2025000281097	20 kg	SK
RAL 7002	Olive grey	30 ±/60°	AE30017700220	2025004948095	20 kg	SK
RAL 7003	Moss grey	30 ±/60°	AE30017700320	2025004955093	20 kg	SK
RAL 7004	Signal grey	30 ±/60°	AE30017700420	2025004932094	20 kg	SK
RAL 7005	Mouse grey	30 ±/60°	AE30017700520	2025000306097	20 kg	SK
RAL 7006	Beige grey	30 ±/60°	AE30017700620	2025015085093	20 kg	SK
RAL 7008	Khaki grey	30 ±/60°	AE30017700820	2025005003090	20 kg	DE
RAL 7009	Green grey	30 ±/60°	AE30017700920	2025015078095	20 kg	DE
RAL 7010	Tarpaulin grey	30 ±/60°	AE30017701020	2025000325098	20 kg	SK
RAL 7011	Iron grey	30 ±/60°	AE300C7701120	2023003223090	20 kg	SK
RAL 7012	Basalt grey	30 ±/60°	AE30017701220	2025000321090	20 kg	SK
RAL 7013	Brown grey	30 ±/60°	AE300C7701320	2023003224097	20 kg	SK

RAL	Colour Description	Gloss	Product Code	Material Code	Unit	Stock
RAL 7015	Slate grey	30 ±/60°	AE30017701520	2025004972090	20 kg	SK
RAL 7016	Anthracite grey	30 ±/60°	AE30017701620	2025000316096	20 kg	SK
RAL 7021	Black grey	30 ±/60°	AE30017702120	2025000336094	20 kg	SK
RAL 7022	Umbr a grey	30 ±/60°	AE30017702220	2025000334090	20 kg	SK
RAL 7023	Concrete grey	30 ±/60°	AE30017702320	2025015072093	20 kg	SK
RAL 7024	Graphite grey	30 ±/60°	AE30017702420	2025004973097	20 kg	SK
RAL 7026	Granite grey	30 ±/60°	AE30017702620	2025000341098	20 kg	SK
RAL 7030	Stone grey	30 ±/60°	AE30017703020	2025004941096	20 kg	SK
RAL 7031	Blue grey	30 ±/60°	AE300C7703120	2023003225094	20 kg	SK
RAL 7032	Pebble grey	30 ±/60°	AE30017703220	2025015070099	20 kg	SK
RAL 7033	Cement grey	30 ±/60°	AE30017703320	2025000303096	20 kg	SK
RAL 7034	Yellow grey	30 ±/60°	AE30017703420	2025015071096	20 kg	SK
RAL 7035	Light grey	30 ±/60°	AE30017703520	2025004881095	20 kg	SK
RAL 7036	Platinum grey	30 ±/60°	AE30017703620	2025002002096	20 kg	SK
RAL 7037	Dusty grey	30 ±/60°	AE30017703720	2025004946091	20 kg	SK
RAL 7038	Agate grey	30 ±/60°	AE30017703820	2025000278097	20 kg	SK
RAL 7039	Quartz grey	30 ±/60°	AE30017703920	2025004954096	20 kg	SK
RAL 7040	Window grey	30 ±/60°	AE30017704020	2025004926093	20 kg	SK
RAL 7042	Traffic grey A	30 ±/60°	AE30017704220	2025004937099	20 kg	SK
RAL 7043	Traffic grey B	30 ±/60°	AE300C7704320	2023003226091	20 kg	SK
RAL 7044	Silk grey	30 ±/60°	AE30017704420	2025000414099	20 kg	SK
RAL 7045	Telegrey 1	30 ±/60°	AE30017704520	2025015069093	20 kg	SK
RAL 7046	Telegrey 2	30 ±/60°	AE30017704620	2025000297098	20 kg	SK
RAL 7047	Telegrey 4	30 ±/60°	AE30017704720	2025004883099	20 kg	SK
RAL 8000	Green brown	30 ±/60°	AE30018800020	2025015031090	20 kg	DE
RAL 8001	Ochre brown	30 ±/60°	AE300C8800120	2023003227098	20 kg	SK
RAL 8002	Signal brown	30 ±/60°	AE30018800220	2025005006091	20 kg	SK
RAL 8003	Clay brown	30 ±/60°	AE30018800320	2025000355095	20 kg	SK
RAL 8004	Copper brown	30 ±/60°	AE30018800420	2025000367098	20 kg	SK
RAL 8007	Fawn brown	30 ±/60°	AE30018800720	2025000370098	20 kg	SK
RAL 8008	Olive brown	30 ±/60°	AE30018800820	2025005004097	20 kg	SK
RAL 8011	Nut brown	30 ±/60°	AE30018801120	2025000377097	20 kg	SK
RAL 8012	Red brown	30 ±/60°	AE30018801220	2025015091094	20 kg	SK
RAL 8014	Sepia brown	30 ±/60°	AE30018801420	2021004767094	20 kg	SK
RAL 8015	Chestnut brown	30 ±/60°	AE30018801520	2025000384095	20 kg	SK
RAL 8016	Mahogany brown	30 ±/60°	AE300C8801620	2023003228095	20 kg	SK
RAL 8017	Chocolate brown	30 ±/60°	AE300C8801720	2023003229092	20 kg	SK
RAL 8019	Grey brown	30 ±/60°	AE300C8801920	2023003230098	20 kg	SK
RAL 8019	Grey brown	30 ±/60°	AE30018870125	2025000387096	20 kg	DE
RAL 8022	Black brown	30 ±/60°	AE30018802220	2025004987094	20 kg	SK
RAL 8023	Orange brown	30 ±/60°	AE30018802320	2025015084096	20 kg	SK
RAL 8024	Beige brown	30 ±/60°	AE30018802420	2025015082092	20 kg	SK
RAL 8025	Pale brown	30 ±/60°	AE30018802520	2025015088094	20 kg	SK
RAL 8027	Leather brown	30 ±/60°	AE30018500125	2025015089091	20 kg	DE
RAL 8028	Terra brown	30 ±/60°	AE30018802820	2025015092091	20 kg	SK
RAL 9001	Cream	30 ±/60°	AE300C9900120	2023003231095	20 kg	SK

RAL	Colour Description	Gloss	Product Code	Material Code	Unit	Stock
RAL 9002	Grey white	30 ±/60°	AE300C9900220	2023003232092	20 kg	SK
RAL 9003	Signal white	30 ±/60°	AE300C9900320	2023003233099	20 kg	SK
RAL 9004	Signal black	30 ±/60°	AE300C4900420	2023003234096	20 kg	SK
RAL 9005	Jet black	30 ±/60°	AE30014900520	2025004986097	20 kg	SK
RAL 9010	Pure white	30 ±/60°	AE30019901020	2025000396098	20 kg	SK
RAL 9011	Graphite black	30 ±/60°	AE30014901120	2025000353091	20 kg	SK
RAL 9016	Traffic white	30 ±/60°	AE300C9901620	2023003235093	20 kg	SK
RAL 9017	Traffic black	30 ±/60°	AE300C4901720	2023003236090	20 kg	SK
RAL 9018	Papyrus white	30 ±/60°	AE30019901820	2025000416093	20 kg	SK

The Matt Collection Specials

Description: matt, smooth, *metallic

GSB Standard & Qualicoat Class I

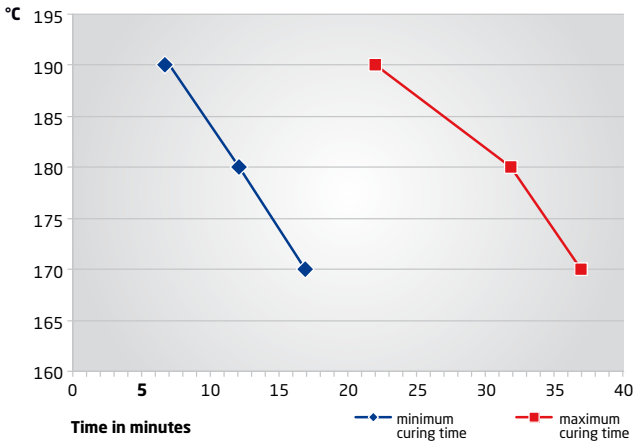
RAL	Colour Description	Gloss	Product Code	Material Code	Unit	Stock
RAL 1013	Oyster white	30 ±/60°	AE30051101322	2022008393098	20 kg	DE
RAL 1015	Light ivory	30 ±/60°	AE30051101522	2022008394095	20 kg	DE
RAL 7035	Light grey	30 ±/60°	AE30057703522	2022008395092	20 kg	DE
RAL 9003	Signal white	30 ±/60°	AE30059900322	2022008542090	20 kg	DE
RAL 9010	Pure white	30 ±/60°	AE30059901022	2022008392091	20 kg	DE
RAL 9016	Traffic white	30 ±/60°	AE30059901622	2022008399090	20 kg	DE
		30 ±/60°	AE30014927622	2022009128095	20 kg	DE
RAL 9006 ±	White aluminium	30 ±/60°	AE30217900620*	2021003109093	20 kg	SK
RAL 9007 ±	Grey aluminium	30 ±/60°	AE30217900720*	2021004213096	20 kg	SK
	DB 701	30 ±/60°	AE30257907322*	2022008935090	20 kg	DE
	DB 702	30 ±/60°	AE30257749522*	2022008934093	20 kg	DE
	DB 703	30 ±/60°	AE30257750122*	2022008933096	20 kg	SK
	DB 704	30 ±/60°	AE30257765022*	2022009095090	20 kg	DE
	Soprano 1	20 ±/60°	AE20317062225*	2025004888094	20 kg	DE
	Soprano 2	30 ±/60°	AE30317063125*	2025004903094	20 kg	DE
	Soprano 3	30 ±/60°	AE30317063225*	2025004917091	20 kg	DE
	Soprano 5	30 ±/60°	AE30317063425*	2025004905098	20 kg	FR
	Tenor 1	30 ±/60°	AE30317004925*	2025004901090	20 kg	DE
	Tenor 2	30 ±/60°	AE30317076225*	2025004913093	20 kg	DE
	Tenor 3	30 ±/60°	AE30317076325*	2025004909096	15 kg	DE
	Tenor 4	30 ±/60°	AE30317081125*	2025004908099	20 kg	FR

The Semi-Gloss Collection Alesta®

A range of architectural polyester powder coatings in a variety of 190 RAL colours, including a bonded version of ± RAL 9006 & 9007. They have a semi-gloss finish with 72GU and provide an excellent weather and scratch resistance.

- 190 RAL-colours in stock
- Excellent flow properties
- Good scratch resistance
- Excellent weather resistance
- Gloss: 72GU at 60° (±5GU)
- GSB and Qualicoat approved
- Colour based on RAL 841 GL

Curing Schedule Alesta® AP AE Semi-Gloss



minimum curing time	maximum curing time	Temperature °C
17	37	170
12	32	180
7	22	190



The Semi-Gloss Collection

Description: semi gloss, smooth

GSB Standard & Qualicoat Class I

RAL	Colour Description	Gloss	Product Code	Material Code	Unit	Stock
RAL 1000	Green beige	72 ±/60°	AE70011100020	2022009635098	20 kg	SK
RAL 1001	Beige	72 ±/60°	AE70011100120	2022009701090	20 kg	SK
RAL 1002	Sand yellow	72 ±/60°	AE70011100220	2022009636095	20 kg	SK
RAL 1003	Signal yellow	72 ±/60°	AE70011100320	2022009637092	20 kg	SK
RAL 1004	Golden yellow	72 ±/60°	AE70011100420	2022009702097	20 kg	SK
RAL 1005	Honey yellow	72 ±/60°	AE70011100520	2022009638099	20 kg	SK
RAL 1006	Maize yellow	72 ±/60°	AE70011100620	2022009703094	20 kg	SK
RAL 1007	Daffodil yellow	72 ±/60°	AE70011100720	2022009639096	20 kg	SK
RAL 1011	Brown beige	72 ±/60°	AE70011101120	2022009741096	20 kg	SK
RAL 1012	Lemon yellow	72 ±/60°	AE70011101220	2022009742093	20 kg	DE
RAL 1013	Oyster white	72 ±/60°	AE70011101320	2022009640092	20 kg	SK
RAL 1014	Ivory	72 ±/60°	AE70011101420	2022009704091	20 kg	DE
RAL 1015	Light ivory	72 ±/60°	AE70011101520	2022009705098	20 kg	SK
RAL 1016	Sulfur yellow	72 ±/60°	AE70011101620	2022009641099	20 kg	DE
RAL 1017	Saffron yellow	72 ±/60°	AE70011101720	2022009706095	20 kg	SK
RAL 1018	Zinc yellow	72 ±/60°	AE70011101820	2022009642096	20 kg	SK
RAL 1019	Grey beige	72 ±/60°	AE70011101920	2022009707092	20 kg	SK
RAL 1020	Olive yellow	72 ±/60°	AE70011102020	2022009708099	20 kg	DE
RAL 1021	Colza yellow	72 ±/60°	AE70011102120	2022009643093	20 kg	SK
RAL 1023	Traffic yellow	72 ±/60°	AE70011102320	2022009644090	20 kg	SK
RAL 1024	Ochre yellow	72 ±/60°	AE70011102420	2022009709096	20 kg	DE
RAL 1027	Curry	72 ±/60°	AE70011102720	2022009710092	20 kg	DE
RAL 1028	Melon yellow	72 ±/60°	AE70011102820	2022009711099	20 kg	SK
RAL 1032	Broom yellow	72 ±/60°	AE70011103220	2022009744097	20 kg	SK
RAL 1033	Dahlia yellow	72 ±/60°	AE70011103320	2022009712096	20 kg	DE
RAL 1034	Pastel yellow	72 ±/60°	AE70011103420	2022009745094	20 kg	DE
RAL 1037	Sun yellow	72 ±/60°	AE70011103720	2022009746091	20 kg	SK
RAL 2000	Yellow orange	72 ±/60°	AE70012200020	2022009664098	20 kg	DE
RAL 2001	Red orange	72 ±/60°	AE70012200120	2022009663091	15 kg	DE
RAL 2002	Vermilion	72 ±/60°	AE70012200220	2022009661097	20 kg	SK
RAL 2003	Pastel orange	72 ±/60°	AE70012200320	2022009662094	20 kg	SK
RAL 2004	Pure orange	72 ±/60°	AE70012200420	2022009665095	15 kg	SK
RAL 2008	Bright red orange	72 ±/60°	AE70012200820	2022009645097	20 kg	SK
RAL 2009	Traffic orange	72 ±/60°	AE70012200920	2022009666092	20 kg	SK
RAL 2010	Signal orange	72 ±/60°	AE70012201020	2022009667099	20 kg	DE
RAL 2011	Deep orange	72 ±/60°	AE70012201120	2022009646094	20 kg	SK
RAL 2012	Salmon orange	72 ±/60°	AE70012201220	2022009747098	20 kg	DE
RAL 3000	Flame red	72 ±/60°	AE70013300020	2022009650091	20 kg	SK
RAL 3001	Signal red	72 ±/60°	AE70013300120	2022009728097	15 kg	SK
RAL 3002	Carmine red	72 ±/60°	AE70013300220	2022009748095	15 kg	SK
RAL 3003	Ruby red	72 ±/60°	AE70013300320	2022009714090	20 kg	SK
RAL 3004	Purple red	72 ±/60°	AE70013300420	2022009713093	15 kg	SK

RAL	Colour Description	Gloss	Product Code	Material Code	Unit	Stock
RAL 3005	Wine red	72 \pm 60°	AE70013300520	2022009647091	15 kg	SK
RAL 3007	Black red	72 \pm 60°	AE70013300720	2022009648098	20 kg	DE
RAL 3009	Oxide red	72 \pm 60°	AE70013300920	2022009649095	20 kg	SK
RAL 3011	Brown red	72 \pm 60°	AE70013301120	2022009749092	20 kg	SK
RAL 3012	Beige red	72 \pm 60°	AE70013301220	2022009750098	20 kg	SK
RAL 3013	Tomato red	72 \pm 60°	AE70013301320	2022009651098	20 kg	SK
RAL 3014	Antique pink	72 \pm 60°	AE70013301420	2022009751095	20 kg	DE
RAL 3015	Light pink	72 \pm 60°	AE70013301520	2022009752092	20 kg	DE
RAL 3016	Coral red	72 \pm 60°	AE70013301620	2022009753099	20 kg	SK
RAL 3017	Rose	72 \pm 60°	AE70013301720	2022009743090	20 kg	DE
RAL 3018	Strawberry red	72 \pm 60°	AE70013301820	2022009764095	20 kg	DE
RAL 3020	Traffic red	72 \pm 60°	AE70013302020	2027014976099	15 kg	SK
RAL 3022	Salmon pink	72 \pm 60°	AE70013302220	2022009765092	20 kg	DE
RAL 3027	Raspberry red	72 \pm 60°	AE70013302720	2022009766099	20 kg	DE
RAL 3028	Pure red	72 \pm 60°	AE70013302820	2027011654099	20 kg	SK
RAL 3031	Orient red	72 \pm 60°	AE70013303120	2022009767096	20 kg	SK
RAL 4001	Red lilac	72 \pm 60°	AE70013400120	2022009768093	20 kg	DE
RAL 4002	Red violet	72 \pm 60°	AE70013400220	2022009769090	20 kg	SK
RAL 4003	Heather violet	72 \pm 60°	AE70013400320	2022009655096	20 kg	DE
RAL 4004	Claret violet	72 \pm 60°	AE70013400420	2022009770096	20 kg	DE
RAL 4005	Blue lilac	72 \pm 60°	AE70013400520	2022009771093	20 kg	DE
RAL 4006	Traffic purple	72 \pm 60°	AE70013400620	2022009772090	20 kg	DE
RAL 4007	Purple violet	72 \pm 60°	AE70013400720	2022009656093	20 kg	DE
RAL 4008	Signal violet	72 \pm 60°	AE70013400820	2022009773097	20 kg	SK
RAL 4009	Pastel violet	72 \pm 60°	AE70013400920	2022009774094	20 kg	DE
RAL 4010	Telemagenta	72 \pm 60°	AE70013401020	2022009715097	20 kg	DE
RAL 5000	Violet blue	72 \pm 60°	AE70015500020	2022009660090	20 kg	SK
RAL 5001	Green blue	72 \pm 60°	AE70015500120	2022009775091	20 kg	SK
RAL 5002	Ultramarine blue	72 \pm 60°	AE70015500220	2022009657090	20 kg	SK
RAL 5003	Sapphire blue	72 \pm 60°	AE70015500320	2022009776098	20 kg	SK
RAL 5004	Black blue	72 \pm 60°	AE70015500420	2022009658097	20 kg	DE
RAL 5005	Signal blue	72 \pm 60°	AE70015500520	2022009659094	20 kg	SK
RAL 5007	Brilliant blue	72 \pm 60°	AE70015500720	2022009716094	20 kg	SK
RAL 5008	Grey blue	72 \pm 60°	AE70015500820	2022009725096	20 kg	DE
RAL 5009	Azure blue	72 \pm 60°	AE70015500920	2022009735095	20 kg	SK
RAL 5010	Gentian blue	72 \pm 60°	AE70015501020	2022009736092	20 kg	SK
RAL 5011	Steel blue	72 \pm 60°	AE70015501120	2022009737099	20 kg	SK
RAL 5012	Light blue	72 \pm 60°	AE70015501220	2022009699090	20 kg	SK
RAL 5013	Cobalt blue	72 \pm 60°	AE70015501320	2022009754096	20 kg	SK
RAL 5014	Pigeon blue	72 \pm 60°	AE70015501420	2022009698093	20 kg	SK
RAL 5015	Sky blue	72 \pm 60°	AE70015501520	2022009755093	20 kg	SK
RAL 5017	Traffic blue	72 \pm 60°	AE70015501720	2022009697096	20 kg	SK
RAL 5018	Turquoise blue	72 \pm 60°	AE70015501820	2022009696099	20 kg	SK
RAL 5019	Capri blue	72 \pm 60°	AE70015501920	2022009777095	20 kg	SK
RAL 5020	Ocean blue	72 \pm 60°	AE70015502020	2022009778092	20 kg	DE
RAL 5021	Water blue	72 \pm 60°	AE70015502120	2022009779099	20 kg	SK

RAL	Colour Description	Gloss	Product Code	Material Code	Unit	Stock
RAL 5022	Night blue	72 ±/60°	AE70015502220	2022009780095	20 kg	SK
RAL 5023	Distant blue	72 ±/60°	AE70015502320	2022009781092	20 kg	DE
RAL 5024	Pastel blue	72 ±/60°	AE70015502420	2022009782099	20 kg	SK
RAL 6000	Patina green	72 ±/60°	AE70016600020	2022009695092	20 kg	SK
RAL 6001	Emerald green	72 ±/60°	AE70016600120	2022009783096	20 kg	SK
RAL 6002	Leaf green	72 ±/60°	AE70016600220	2022009694095	20 kg	SK
RAL 6003	Olive green	72 ±/60°	AE70016600320	2022009784093	20 kg	SK
RAL 6004	Blue green	72 ±/60°	AE70016600420	2022009690097	20 kg	SK
RAL 6005	Moss green	72 ±/60°	AE70016600520	2022009785090	20 kg	SK
RAL 6006	Grey olive	72 ±/60°	AE70016600620	2022009786097	20 kg	DE
RAL 6007	Bottle green	72 ±/60°	AE70016600720	2022009787094	20 kg	DE
RAL 6008	Brown green	72 ±/60°	AE70016600820	2022009788091	20 kg	DE
RAL 6009	Fir green	72 ±/60°	AE70016600920	2022009693098	20 kg	SK
RAL 6010	Grass green	72 ±/60°	AE70016601020	2022009692091	20 kg	SK
RAL 6011	Reseda green	72 ±/60°	AE70016601120	2022009738096	20 kg	SK
RAL 6012	Black green	72 ±/60°	AE70016601220	2022009739093	20 kg	DE
RAL 6013	Reed green	72 ±/60°	AE70016601320	2022009740099	20 kg	DE
RAL 6014	Yellow olive	72 ±/60°	AE70016601420	2022009688094	20 kg	DE
RAL 6015	Black olive	72 ±/60°	AE70016601520	2022009789098	20 kg	DE
RAL 6016	Turquoise green	72 ±/60°	AE70016601620	2022009756090	20 kg	DE
RAL 6017	May green	72 ±/60°	AE70016601720	2022009757097	20 kg	SK
RAL 6018	Yellow green	72 ±/60°	AE70016601820	2022009687097	20 kg	SK
RAL 6019	Pastel green	72 ±/60°	AE70016601920	2022009790094	20 kg	SK
RAL 6020	Chrome green	72 ±/60°	AE70016602020	2022009791091	20 kg	DE
RAL 6021	Pale green	72 ±/60°	AE70016602120	2022009792098	20 kg	SK
RAL 6022	Olive drab	72 ±/60°	AE70016602220	2022009717091	20 kg	DE
RAL 6024	Traffic green	72 ±/60°	AE70016602420	2022009793095	20 kg	DE
RAL 6025	Fern green	72 ±/60°	AE70016602520	2022009794092	20 kg	DE
RAL 6026	Opal green	72 ±/60°	AE70016602620	2022009691094	20 kg	SK
RAL 6027	Light green	72 ±/60°	AE70016602720	2022009795099	20 kg	SK
RAL 6028	Pine green	72 ±/60°	AE70016602820	2022009686090	20 kg	SK
RAL 6029	Mint green	72 ±/60°	AE70016602920	2022009796096	20 kg	SK
RAL 6032	Signal green	72 ±/60°	AE70016603220	2022009797093	20 kg	SK
RAL 6033	Mint turquoise	72 ±/60°	AE70016603320	2022009798090	20 kg	SK
RAL 6034	Pastel turquoise	72 ±/60°	AE70016603420	2022009685093	20 kg	SK
RAL 6037	Pure green	72 ±/60°	AE70016603720	2027011653092	20 kg	SK
RAL 7000	Squirrel grey	72 ±/60°	AE70017700020	2022009684096	20 kg	DE
RAL 7001	Silver grey	72 ±/60°	AE70017700120	2022009758094	20 kg	SK
RAL 7002	Olive grey	72 ±/60°	AE70017700220	2022009759091	20 kg	SK
RAL 7003	Moss grey	72 ±/60°	AE70017700320	2022009760097	20 kg	SK
RAL 7004	Signal grey	72 ±/60°	AE70017700420	2022009761094	20 kg	SK
RAL 7005	Mouse grey	72 ±/60°	AE70017700520	2022009762091	20 kg	SK
RAL 7006	Beige grey	72 ±/60°	AE70017700620	2022009799097	20 kg	SK
RAL 7008	Khaki grey	72 ±/60°	AE70017700820	2022009763098	20 kg	SK
RAL 7009	Green grey	72 ±/60°	AE70017700920	2022009800090	20 kg	DE
RAL 7010	Tarpaulin grey	72 ±/60°	AE70017701020	2022009801097	20 kg	SK

RAL	Colour Description	Gloss	Product Code	Material Code	Unit	Stock
RAL 7011	Iron grey	72 \pm 60°	AE70017701120	2022009628090	20 kg	SK
RAL 7012	Basalt grey	72 \pm 60°	AE70017701220	2022009629097	20 kg	SK
RAL 7013	Brown grey	72 \pm 60°	AE70017701320	2022009720091	20 kg	SK
RAL 7015	Slate grey	72 \pm 60°	AE70017701520	2022009630093	20 kg	SK
RAL 7016	Anthracite grey	72 \pm 60°	AE70017701620	2022009462090	20 kg	SK
RAL 7021	Black grey	72 \pm 60°	AE70017702120	2022009631090	20 kg	SK
RAL 7022	Umbra grey	72 \pm 60°	AE70017702220	2022009632097	20 kg	SK
RAL 7023	Concrete grey	72 \pm 60°	AE70017702320	2022009802094	20 kg	SK
RAL 7024	Graphite grey	72 \pm 60°	AE70017702420	2022009633094	20 kg	SK
RAL 7026	Granite grey	72 \pm 60°	AE70017702620	2022009722095	20 kg	SK
RAL 7030	Stone grey	72 \pm 60°	AE70017703020	2022009721098	20 kg	SK
RAL 7031	Blue grey	72 \pm 60°	AE70017703120	2022009803091	20 kg	SK
RAL 7032	Pebble grey	72 \pm 60°	AE70017703220	2022009804098	20 kg	SK
RAL 7033	Cement grey	72 \pm 60°	AE70017703320	2022009727090	20 kg	SK
RAL 7034	Yellow grey	72 \pm 60°	AE70017703420	2022009726093	20 kg	SK
RAL 7035	Light grey	72 \pm 60°	AE70017703520	2022009634091	20 kg	SK
RAL 7036	Platinum grey	72 \pm 60°	AE70017703620	2022009805095	20 kg	SK
RAL 7037	Dusty grey	72 \pm 60°	AE70017703720	2022009806092	20 kg	SK
RAL 7038	Agate grey	72 \pm 60°	AE70017703820	2022009683099	20 kg	SK
RAL 7039	Quartz grey	72 \pm 60°	AE70017703920	2022009682092	20 kg	SK
RAL 7040	Window grey	72 \pm 60°	AE70017704020	2022009678095	20 kg	SK
RAL 7042	Traffic grey A	72 \pm 60°	AE70017704220	2022009700093	20 kg	SK
RAL 7043	Traffic grey B	72 \pm 60°	AE70017704320	2022009807099	20 kg	SK
RAL 7044	Silk grey	72 \pm 60°	AE70017704420	2022009681095	20 kg	SK
RAL 7045	Telegrey 1	72 \pm 60°	AE70017704520	2022009808096	20 kg	SK
RAL 7046	Telegrey 2	72 \pm 60°	AE70017704620	2022009809093	20 kg	SK
RAL 7047	Telegrey 4	72 \pm 60°	AE70017704720	2022009810099	20 kg	SK
RAL 8000	Green brown	72 \pm 60°	AE70018800020	2022009811096	20 kg	SK
RAL 8001	Ochre brown	72 \pm 60°	AE70018800120	2022009677098	20 kg	SK
RAL 8002	Signal brown	72 \pm 60°	AE70018800220	2022009812093	20 kg	SK
RAL 8003	Clay brown	72 \pm 60°	AE70018800320	2022009718098	20 kg	SK
RAL 8004	Copper brown	72 \pm 60°	AE70018800420	2022009676091	20 kg	SK
RAL 8007	Fawn brown	72 \pm 60°	AE70018800720	2022009719095	20 kg	SK
RAL 8008	Olive brown	72 \pm 60°	AE70018800820	2022009813090	20 kg	SK
RAL 8011	Nut brown	72 \pm 60°	AE70018801120	2022009675094	20 kg	SK
RAL 8012	Red brown	72 \pm 60°	AE70018801220	2022009814097	20 kg	SK
RAL 8014	Sepia brown	72 \pm 60°	AE70018801420	2022009815094	20 kg	SK
RAL 8015	Chestnut brown	72 \pm 60°	AE70018801520	2022009816091	20 kg	DE
RAL 8016	Mahogany brown	72 \pm 60°	AE70018801620	2022009817098	20 kg	SK
RAL 8017	Chocolate brown	72 \pm 60°	AE70018801720	2022009818095	20 kg	SK
RAL 8019	Grey brown	72 \pm 60°	AE70018801920	2022009671096	20 kg	SK
RAL 8022	Black brown	72 \pm 60°	AE70018802220	2022009819092	20 kg	SK
RAL 8023	Orange brown	72 \pm 60°	AE70018802320	2022009820098	20 kg	SK
RAL 8024	Beige brown	72 \pm 60°	AE70018802420	2022009821095	20 kg	SK
RAL 8025	Pale brown	72 \pm 60°	AE70018802520	2022009822092	20 kg	SK
RAL 8028	Terra brown	72 \pm 60°	AE70018802820	2022009674097	20 kg	SK

RAL	Colour Description	Gloss	Product Code	Material Code	Unit	Stock
RAL 8077		72 ±/60°	AE70058830122	2022007075094	20 kg	SK
RAL 9001	Cream	72 ±/60°	AE70019900120	2022009652095	20 kg	SK
RAL 9002	Grey white	72 ±/60°	AE70019900220	2022009653092	20 kg	SK
RAL 9003	Signal white	72 ±/60°	AE70019900320	2022009724099	20 kg	SK
RAL 9004	Signal black	72 ±/60°	AE70014900420	2022009823099	20 kg	SK
RAL 9005	Jet black	72 ±/60°	AE70014900520	2022009730090	20 kg	SK
RAL 9010	Pure white	72 ±/60°	AE70019901020	2022009626096	20 kg	SK
RAL 9011	Graphite black	72 ±/60°	AE70014901120	2022009723092	20 kg	SK
RAL 9016	Traffic white	72 ±/60°	AE70019901620	2022009461093	20 kg	SK
RAL 9017	Traffic black	72 ±/60°	AE70014901720	2022009824096	20 kg	SK
RAL 9018	Papyrus white	72 ±/60°	AE70019901820	2022009669093	20 kg	SK

The Semi-Gloss Collection Specials

Description: semi gloss, smooth, *metallic

GSB Standard & Qualicoat Class I

RAL	Colour Description	Gloss	Product Code	Material Code	Unit	Stock
RAL 9006 ±	White aluminium	72 ±/60°	AE70257900622*	2022006230098	20 kg	SK
RAL 9007 ±	Grey aluminium	72 ±/60°	AE70257900722*	2022007043093	20 kg	SK
RAL 9006 ±	White aluminium	65 ±/60°	AE70257930622*	2022007002090	20 kg	SK
RAL 9007 ±	Grey aluminium	72 ±/60°	AE70257930722*	2022007010095	20 kg	SK
RAL 9006 ±	White aluminium	72 ±/60°	AE70257717322*	2022009848092	20 kg	SK
RAL 9007 ±	Grey aluminium	72 ±/60°	AE70257717422*	2022009850095	20 kg	DE
RAL 9006 ±	White aluminium	72 ±/60°	AE70107900620*	2021008058099	20 kg	SK
RAL 9007 ±	Grey aluminium	72 ±/60°	AE70107900720*	2021008484096	20 kg	SK
RAL 9016	Traffic white	72 ±/60°	AE70059941622	2022010044094	20 kg	DE

Montabaur, Germany

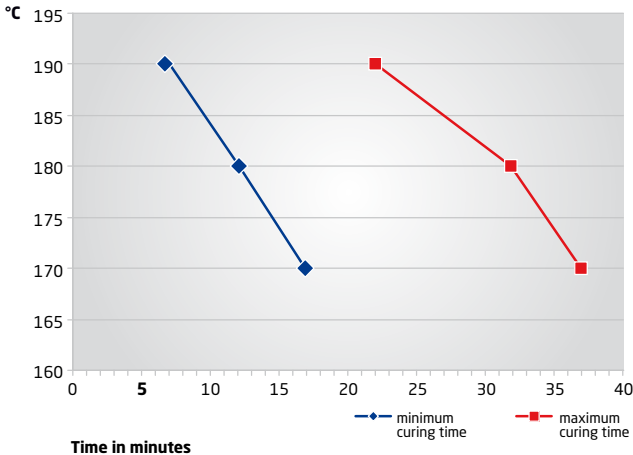


The High-Gloss Collection

A range of architectural polyester powder coatings in a variety of 190 RAL colours, including a bonded version of \pm RAL 9006 & 9007. They have a glossy finish with 85GU and provide an excellent weather and scratch resistance.

- 190 RAL-colours in stock
- Excellent flow properties
- Good scratch resistance
- Excellent weather resistance
- Gloss: 85GU at 60° (\pm 5GU)
- GSB and Qualicoat approved

Curing Schedule Alesta® AP AE Gloss



minimum curing time	maximum curing time	Temperature °C
17	37	170
12	32	180
7	22	190



The High-Gloss Collection

Description: glossy, smooth

GSB Standard & Qualicoat Class I

RAL	Colour Description	Gloss	Product Code	Material Code	Unit	Stock
RAL 1000	Green beige	85 ±/60°	AE80011100020	2021000926099	20 kg	SK
RAL 1001	Beige	85 ±/60°	AE80011100120	2021006182093	20 kg	SK
RAL 1002	Sand yellow	85 ±/60°	AE80011100220	2021000923098	20 kg	SK
RAL 1003	Signal yellow	85 ±/60°	AE80011100320	2027006032093	20 kg	SK
RAL 1004	Golden yellow	85 ±/60°	AE80011100420	2021006224090	20 kg	SK
RAL 1005	Honey yellow	85 ±/60°	AE80011100520	2021006070093	20 kg	SK
RAL 1006	Maize yellow	85 ±/60°	AE80011100620	2021006032091	20 kg	SK
RAL 1007	Daffodil yellow	85 ±/60°	AE80011100720	2021003717090	15 kg	SK
RAL 1011	Brown beige	85 ±/60°	AE80011101120	2021126172097	20 kg	SK
RAL 1012	Lemon yellow	85 ±/60°	AE80011101220	2021136173091	20 kg	DE
RAL 1013	Oyster white	85 ±/60°	AE80011101320	2027006033090	20 kg	SK
RAL 1014	Ivory	85 ±/60°	AE80011101420	2021006232095	20 kg	SK
RAL 1015	Light ivory	85 ±/60°	AE80011101520	2027006034097	20 kg	SK
RAL 1016	Sulfur yellow	85 ±/60°	AE80011101620	2021006034095	20 kg	SK
RAL 1017	Saffron yellow	85 ±/60°	AE80011101720	2021006035092	20 kg	DE
RAL 1018	Zinc yellow	85 ±/60°	AE80011101820	2027006035094	20 kg	SK
RAL 1019	Grey beige	85 ±/60°	AE80011101920	2021116171093	20 kg	SK
RAL 1020	Olive yellow	85 ±/60°	AE80011102020	2021005556093	20 kg	SK
RAL 1021	Colza yellow	85 ±/60°	AE80011102120	2027006036091	20 kg	SK
RAL 1023	Traffic yellow	85 ±/60°	AE80011102320	2027006037098	20 kg	SK
RAL 1024	Ochre yellow	85 ±/60°	AE80011102420	2021005558097	20 kg	DE
RAL 1027	Curry	85 ±/60°	AE80011102720	2021006197097	20 kg	DE
RAL 1028	Melon yellow	85 ±/60°	AE80011102820	2021006036099	15 kg	SK
RAL 1032	Broom yellow	85 ±/60°	AE80011103220	2021006038093	20 kg	SK
RAL 1033	Dahlia yellow	85 ±/60°	AE80011103320	2021006039090	20 kg	DE
RAL 1034	Pastel yellow	85 ±/60°	AE80011103420	2021006037096	20 kg	SK
RAL 2000	Yellow orange	85 ±/60°	AE80012200020	2021000395093	15 kg	SK
RAL 2001	Red orange	85 ±/60°	AE80012200120	2021003779098	20 kg	DE
RAL 2002	Vermilion	85 ±/60°	AE80012200220	2027006038095	15 kg	SK
RAL 2003	Pastel orange	85 ±/60°	AE80012200320	2027006039092	20 kg	SK
RAL 2004	Pure orange	85 ±/60°	AE80012200420	2021006041093	15 kg	SK
RAL 2008	Bright red orange	85 ±/60°	AE80012200820	2021007698098	15 kg	SK
RAL 2009	Traffic orange	85 ±/60°	AE80012200920	2021003776097	15 kg	SK
RAL 2010	Signal orange	85 ±/60°	AE80012201020	2021003782098	15 kg	SK
RAL 2011	Deep orange	85 ±/60°	AE80012201120	2027006040098	20 kg	SK
RAL 2012	Salmon orange	85 ±/60°	AE80012201220	2021006047095	15 kg	SK
RAL 3000	Flame red	85 ±/60°	AE80013300020	2021006048092	15 kg	SK
RAL 3001	Signal red	85 ±/60°	AE80013300120	2021001548092	15 kg	SK
RAL 3002	Carmine red	85 ±/60°	AE80013300220	2021001550095	15 kg	SK
RAL 3003	Ruby red	85 ±/60°	AE80013300320	2021006052099	15 kg	SK
RAL 3004	Purple red	85 ±/60°	AE80013300420	2021006072097	15 kg	SK
RAL 3005	Wine red	85 ±/60°	AE80013300520	2027006044096	20 kg	SK

RAL	Colour Description	Gloss	Product Code	Material Code	Unit	Stock
RAL 3007	Black red	85 \pm 60°	AE80013300720	2021001554093	15 kg	SK
RAL 3009	Oxide red	85 \pm 60°	AE80013300920	2027006045093	20 kg	SK
RAL 3011	Brown red	85 \pm 60°	AE80013301120	2021006054093	15 kg	SK
RAL 3012	Beige red	85 \pm 60°	AE80013301220	2021005560090	20 kg	DE
RAL 3013	Tomato red	85 \pm 60°	AE80013301320	2021005561097	20 kg	SK
RAL 3014	Antique pink	85 \pm 60°	AE80013301420	2021005562094	20 kg	DE
RAL 3015	Light pink	85 \pm 60°	AE80013301520	2021005559094	20 kg	DE
RAL 3016	Coral red	85 \pm 60°	AE80013301620	2021001543097	15 kg	SK
RAL 3017	Rose	85 \pm 60°	AE80013301720	2021001556097	15 kg	FR
RAL 3018	Strawberry red	85 \pm 60°	AE80013301820	2021006057094	20 kg	DE
RAL 3020	Traffic red	85 \pm 60°	AE80013302020	2021006058091	15 kg	SK
RAL 3022	Salmon pink	85 \pm 60°	AE80013302220	2021001559098	15 kg	DE
RAL 3027	Raspberry red	85 \pm 60°	AE80013302720	2021001561091	15 kg	SK
RAL 3028	Pure red	85 \pm 60°	AE80013302820	2027011652095	20 kg	FR
RAL 3031	Orient red	85 \pm 60°	AE80013303120	2021001563095	15 kg	DE
RAL 4001	Red lilac	85 \pm 60°	AE80013400120	2021006062098	20 kg	DE
RAL 4002	Red violet	85 \pm 60°	AE80013400220	2021006169094	20 kg	DE
RAL 4003	Heather violet	85 \pm 60°	AE80013400320	2021006063095	20 kg	SK
RAL 4004	Claret violet	85 \pm 60°	AE80013400420	2021001570093	15 kg	SK
RAL 4005	Blue lilac	85 \pm 60°	AE80013400520	2021006065099	20 kg	SK
RAL 4006	Traffic purple	85 \pm 60°	AE80013400620	2021001552099	15 kg	DE
RAL 4007	Purple violet	85 \pm 60°	AE80013400720	2021001568090	15 kg	DE
RAL 4008	Signal violet	85 \pm 60°	AE80013400820	2021006068090	20 kg	SK
RAL 4009	Pastel violet	85 \pm 60°	AE80013400920	2021001577092	15 kg	DE
RAL 4010	Telemagenta	85 \pm 60°	AE80013401020	2021006069097	15 kg	SK
RAL 5000	Violet blue	85 \pm 60°	AE80015500020	2021006087091	20 kg	SK
RAL 5001	Green blue	85 \pm 60°	AE80015500120	2021006088098	20 kg	SK
RAL 5002	Ultramarine blue	85 \pm 60°	AE80015500220	2021001227096	15 kg	SK
RAL 5003	Sapphire blue	85 \pm 60°	AE80015500320	2027006050097	20 kg	SK
RAL 5004	Black blue	85 \pm 60°	AE80015500420	2021004257090	15 kg	SK
RAL 5005	Signal blue	85 \pm 60°	AE80015500520	2027006052091	20 kg	SK
RAL 5007	Brilliant blue	85 \pm 60°	AE80015500720	2027006053098	20 kg	SK
RAL 5008	Grey blue	85 \pm 60°	AE80015500820	2027006054095	20 kg	SK
RAL 5009	Azure blue	85 \pm 60°	AE80015500920	2027006055092	20 kg	SK
RAL 5010	Gentian blue	85 \pm 60°	AE80015501020	2027006056099	20 kg	SK
RAL 5011	Steel blue	85 \pm 60°	AE80015501120	2027006057096	15 kg	SK
RAL 5012	Light blue	85 \pm 60°	AE80015501220	2027006058093	20 kg	SK
RAL 5013	Cobalt blue	85 \pm 60°	AE80015501320	2027006059090	20 kg	SK
RAL 5014	Pigeon blue	85 \pm 60°	AE80015501420	2021006092095	20 kg	DE
RAL 5015	Sky blue	85 \pm 60°	AE80015501520	2027006060096	20 kg	SK
RAL 5017	Traffic blue	85 \pm 60°	AE80015501720	2027006061093	20 kg	SK
RAL 5018	Turquoise blue	85 \pm 60°	AE80015501820	2027006062090	20 kg	SK
RAL 5019	Capri blue	85 \pm 60°	AE80015501920	2021006093092	20 kg	SK
RAL 5020	Ocean blue	85 \pm 60°	AE80015502020	2021006094099	20 kg	SK
RAL 5021	Water blue	85 \pm 60°	AE80015502120	2027006063097	20 kg	SK
RAL 5022	Night blue	85 \pm 60°	AE80015502220	2021006095096	20 kg	SK

RAL	Colour Description	Gloss	Product Code	Material Code	Unit	Stock
RAL 5023	Distant blue	85 ±/60°	AE80015502320	2021006098097	20 kg	DE
RAL 5024	Pastel blue	85 ±/60°	AE80015502420	2021006099094	20 kg	SK
RAL 6000	Patina green	85 ±/60°	AE80016600020	2021001463098	15 kg	SK
RAL 6001	Emerald green	85 ±/60°	AE80016600120	2021006101094	20 kg	SK
RAL 6002	Leaf green	85 ±/60°	AE80016600220	2021001466099	15 kg	SK
RAL 6003	Olive green	85 ±/60°	AE80016600320	2021006103098	15 kg	DE
RAL 6004	Blue green	85 ±/60°	AE80016600420	2021006104095	20 kg	SK
RAL 6005	Moss green	85 ±/60°	AE80016600520	2021146179090	20 kg	SK
RAL 6006	Grey olive	85 ±/60°	AE80016600620	2021006105092	20 kg	DE
RAL 6007	Bottle green	85 ±/60°	AE80016600720	2021004262094	15 kg	DE
RAL 6008	Brown green	85 ±/60°	AE80016600820	2021006107096	20 kg	DE
RAL 6009	Fir green	85 ±/60°	AE80016600920	2027006065091	20 kg	DE
RAL 6010	Grass green	85 ±/60°	AE80016601020	2021006108093	20 kg	SK
RAL 6011	Reseda green	85 ±/60°	AE80016601120	2027006066098	20 kg	SK
RAL 6012	Black green	85 ±/60°	AE80016601220	2027006067095	20 kg	SK
RAL 6013	Reed green	85 ±/60°	AE80016601320	2021006097090	20 kg	SK
RAL 6014	Yellow olive	85 ±/60°	AE80016601420	2021006091098	20 kg	DE
RAL 6015	Black olive	85 ±/60°	AE80016601520	2021006112090	20 kg	DE
RAL 6016	Turquoise green	85 ±/60°	AE80016601620	2021006113097	20 kg	SK
RAL 6017	May green	85 ±/60°	AE80016601720	2021006110096	20 kg	SK
RAL 6018	Yellow green	85 ±/60°	AE80016601820	2027006068092	20 kg	SK
RAL 6019	Pastel green	85 ±/60°	AE80016601920	2021006111093	20 kg	SK
RAL 6020	Chrome green	85 ±/60°	AE80016602020	2021006114094	20 kg	DE
RAL 6021	Pale green	85 ±/60°	AE80016602120	2027006069099	20 kg	SK
RAL 6022	Olive drab	85 ±/60°	AE80016602220	2021006115091	20 kg	DE
RAL 6024	Traffic green	85 ±/60°	AE80016602420	2021006116098	20 kg	SK
RAL 6025	Fern green	85 ±/60°	AE80016602520	2021006118092	20 kg	DE
RAL 6026	Opal green	85 ±/60°	AE80016602620	2021006119099	20 kg	SK
RAL 6027	Light green	85 ±/60°	AE80016602720	2021006120095	20 kg	SK
RAL 6028	Pine green	85 ±/60°	AE80016602820	2021006121092	20 kg	SK
RAL 6029	Mint green	85 ±/60°	AE80016602920	2021006122099	20 kg	SK
RAL 6032	Signal green	85 ±/60°	AE80016603220	2021006142097	20 kg	SK
RAL 6033	Mint turquoise	85 ±/60°	AE80016603320	2021006140093	20 kg	SK
RAL 6034	Pastel turquoise	85 ±/60°	AE80016603420	2021006086094	20 kg	SK
RAL 6037	Pure green	85 ±/60°	AE80016603720	2027011651098	20 kg	FR
RAL 7000	Squirrel grey	85 ±/60°	AE80017700020	2027006070095	20 kg	DE
RAL 7001	Silver grey	85 ±/60°	AE80017700120	2027006071092	20 kg	SK
RAL 7002	Olive grey	85 ±/60°	AE80017700220	2027006072099	20 kg	DE
RAL 7003	Moss grey	85 ±/60°	AE80017700320	2021006137033	20 kg	SK
RAL 7004	Signal grey	85 ±/60°	AE80017700420	2027006073096	20 kg	SK
RAL 7005	Mouse grey	85 ±/60°	AE80017700520	2027006074093	20 kg	SK
RAL 7006	Beige grey	85 ±/60°	AE80017700620	2021006139097	20 kg	SK
RAL 7008	Khaki grey	85 ±/60°	AE80017700820	2021006137093	20 kg	SK
RAL 7009	Green grey	85 ±/60°	AE80017700920	2021006136096	20 kg	SK
RAL 7010	Tarpaulin grey	85 ±/60°	AE80017701020	2021006135099	20 kg	SK
RAL 7011	Iron grey	85 ±/60°	AE80017701120	2027006075090	20 kg	SK

RAL	Colour Description	Gloss	Product Code	Material Code	Unit	Stock
RAL 7012	Basalt grey	85 ±/60°	AE80017701220	2027006076097	20 kg	SK
RAL 7013	Brown grey	85 ±/60°	AE80017701320	2021006109090	20 kg	SK
RAL 7015	Slate grey	85 ±/60°	AE80017701520	2027006077094	20 kg	SK
RAL 7016	Anthracite grey	85 ±/60°	AE80017701620	2027006078091	20 kg	SK
RAL 7021	Black grey	85 ±/60°	AE80017702120	2027006079098	20 kg	SK
RAL 7022	Umbrá grey	85 ±/60°	AE80017702220	2027006080094	20 kg	SK
RAL 7023	Concrete grey	85 ±/60°	AE80017702320	2027006081091	20 kg	SK
RAL 7024	Graphite grey	85 ±/60°	AE80017702420	2027006082098	20 kg	SK
RAL 7026	Granite grey	85 ±/60°	AE80017702620	2027006083095	20 kg	SK
RAL 7030	Stone grey	85 ±/60°	AE80017703020	2027006084092	20 kg	SK
RAL 7031	Blue grey	85 ±/60°	AE80017703120	2027006085099	20 kg	SK
RAL 7032	Pebble grey	85 ±/60°	AE80017703220	2027006086096	20 kg	SK
RAL 7033	Cement grey	85 ±/60°	AE80017703320	2021006134092	20 kg	DE
RAL 7034	Yellow grey	85 ±/60°	AE80017703420	2021006133095	20 kg	SK
RAL 7035	Light grey	85 ±/60°	AE80017703520	2027006087093	20 kg	SK
RAL 7036	Platinum grey	85 ±/60°	AE80017703620	2027006088090	20 kg	SK
RAL 7037	Dusty grey	85 ±/60°	AE80017703720	2027006089097	20 kg	SK
RAL 7038	Agate grey	85 ±/60°	AE80017703820	2027006090093	20 kg	SK
RAL 7039	Quartz grey	85 ±/60°	AE80017703920	2021006132098	20 kg	SK
RAL 7040	Window grey	85 ±/60°	AE80017704020	2027006091090	20 kg	SK
RAL 7042	Traffic grey A	85 ±/60°	AE80017704220	2027006092097	20 kg	SK
RAL 7043	Traffic grey B	85 ±/60°	AE80017704320	2027006093094	20 kg	SK
RAL 7044	Silk grey	85 ±/60°	AE80017704420	2027006094091	20 kg	SK
RAL 7045	Telegrey 1	85 ±/60°	AE80017704520	2027006095098	20 kg	SK
RAL 7046	Telegrey 2	85 ±/60°	AE80017704620	2021006131091	20 kg	SK
RAL 7047	Telegrey 4	85 ±/60°	AE80017704720	2027006096095	20 kg	SK
RAL 8000	Green brown	85 ±/60°	AE80018800020	2021006146095	20 kg	DE
RAL 8001	Ochre brown	85 ±/60°	AE80018800120	2021006124093	20 kg	SK
RAL 8002	Signal brown	85 ±/60°	AE80018800220	2021006148099	20 kg	SK
RAL 8003	Clay brown	85 ±/60°	AE80018800320	2021006151099	20 kg	SK
RAL 8004	Copper brown	85 ±/60°	AE80018800420	2021006150092	20 kg	SK
RAL 8007	Fawn brown	85 ±/60°	AE80018800720	2021006149096	20 kg	SK
RAL 8008	Olive brown	85 ±/60°	AE80018800820	2021006147092	20 kg	SK
RAL 8011	Nut brown	85 ±/60°	AE80018801120	2021006145098	20 kg	SK
RAL 8012	Red brown	85 ±/60°	AE80018801220	2021006144091	20 kg	SK
RAL 8014	Sepia brown	85 ±/60°	AE80018801420	2027006097092	20 kg	SK
RAL 8015	Chestnut brown	85 ±/60°	AE80018801520	2021006123096	20 kg	SK
RAL 8016	Mahogany brown	85 ±/60°	AE80018801620	2021006125090	20 kg	SK
RAL 8017	Chocolate brown	85 ±/60°	AE80018801720	2027006098099	20 kg	SK
RAL 8019	Grey brown	85 ±/60°	AE80018801920	2027006099096	20 kg	SK
RAL 8022	Black brown	85 ±/60°	AE80018802220	2027007000091	20 kg	SK
RAL 8023	Orange brown	85 ±/60°	AE80018802320	2021006126097	20 kg	SK
RAL 8024	Beige brown	85 ±/60°	AE80018802420	2021006127094	20 kg	SK
RAL 8025	Pale brown	85 ±/60°	AE80018802520	2021006128091	20 kg	SK
RAL 8028	Terra brown	85 ±/60°	AE80018802820	2021006129098	20 kg	SK
RAL 9001	Cream	85 ±/60°	AE80019900120	2027007002095	20 kg	SK

RAL	Colour Description	Gloss	Product Code	Material Code	Unit	Stock
RAL 9002	Grey white	85 ±/60°	AE80019900220	2027007003092	20 kg	SK
RAL 9003	Signal white	85 ±/60°	AE80019900320	2027007004099	20 kg	SK
RAL 9004	Signal black	85 ±/60°	AE80014900420	2027007005096	20 kg	DE
RAL 9005	Jet black	85 ±/60°	AE80014900520	2027007006093	20 kg	SK
RAL 9010	Pure white	85 ±/60°	AE80019901020	2027007009094	20 kg	SK
RAL 9011	Graphite black	85 ±/60°	AE80014901120	2027007010090	20 kg	SK
RAL 9016	Traffic white	85 ±/60°	AE80019901620	2027007011097	20 kg	SK
RAL 9017	Traffic black	85 ±/60°	AE80014901720	2021006085097	20 kg	SK
RAL 9018	Papyrus white	85 ±/60°	AE80019901820	2021006084090	20 kg	SK

The High-Gloss Collection Specials

Description: glossy, smooth, *metallic

GSB Standard & Qualicoat Class I

RAL	Colour Description	Gloss	Product Code	Material Code	Unit	Stock
RAL 9010	Pure white	85 ±/60°	AE80019911022	2022009948099	20 kg	DE
RAL 9016	Traffic white	85 ±/60°	AE80019911622	2022009947092	20 kg	SK
RAL 9016	Traffic white	85 ±/60°	AE80009155420	2021005315096	20 kg	SK
RAL 9006 ±	White aluminium	75 ±/60°	AE80217005025	2021004279092	15 kg	SK
RAL 9007 ±	Grey aluminium	85 ±/60°	AE80217095025	2021004280098	20 kg	SK
RAL 9006 ±	White aluminium	85 ±/60°	AE80157900620	2021004915099	20 kg	SK
RAL 9007 ±	Grey aluminium	85 ±/60°	AE80157900720	2021004914092	20 kg	SK

Voka,
Jacques Verbeke and
Philip Dewit from Mebumar/MV2,
Belgium



The Fine Textured Collection

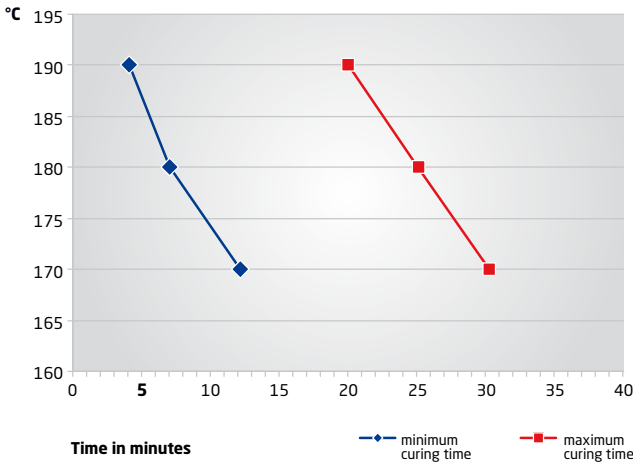


In a world that becomes more digital every day, society craves for tactility. The touch and feel of a material together with a unique colour define its impact on our emotions. And emotion goes hand in hand with creativity, it can be the muse each designer or architect is looking for.

At Axalta Coating Systems we embrace originality, that's why we approached our new Fine Textured Collection with the spirit of trends. Out of the 155 available colours we selected 25 colours and set them into 5 trendy themes, to inspire the creators of modern design.

Responding to the specific expectations of architects, decorators, furnishers and the industry in general, "The Fine Textured Collection" presents 155 Ral colours exclusively formulated with a fine textured matt finish. This trendy finish is highly appreciated.

Curing Schedule Alesta® AP AE Fine Textured



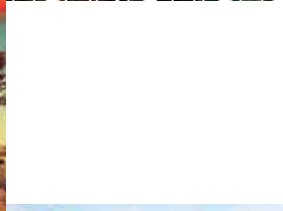
minimum curing time	maximum curing time	Temperature °C
12	30	170
7	25	180
4	20	190



The Fine Textured Collection

Description: matt, fine texture
GSB Standard & Qualicoat Class I

RAL	Colour Description	Gloss	Product Code	Material Code	Unit	Stock
RAL 1001	Beige	5 ±/60°	AE03051100120	2021005306094	20 kg	SK
RAL 1003	Signal yellow	5 ±/60°	AE03051100320	2027014680095	20 kg	SK
RAL 1004	Golden yellow	5 ±/60°	AE03051100420	2027012092098	20 kg	SK
RAL 1011	Brown beige	5 ±/60°	AE03051101120	2027011649095	20 kg	SK
RAL 1013	Oyster white	5 ±/60°	AE03051101320	2021005231099	20 kg	SK
RAL 1014	Ivory	5 ±/60°	AE03051101420	2027011445093	20 kg	SK
RAL 1015	Light ivory	5 ±/60°	AE03051101520	2021005232096	20 kg	SK
RAL 1016	Sulfur yellow	5 ±/60°	AE03051101620	2027011632097	20 kg	DE
RAL 1018	Zinc yellow	5 ±/60°	AE03051101820	2027011766099	20 kg	SK
RAL 1019	Grey beige	5 ±/60°	AE03051101920	2021005233093	20 kg	SK
RAL 1021	Colza yellow	5 ±/60°	AE03051102120	2027011579095	20 kg	DE
RAL 1023	Traffic yellow	5 ±/60°	AE03051102320	2027014369099	20 kg	DE
RAL 1028	Melon yellow	5 ±/60°	AE03051102820	2027012240093	20 kg	SK
RAL 1032	Broom yellow	5 ±/60°	AE03051103220	2027012857093	20 kg	DE
RAL 2000	Yellow orange	5 ±/60°	AE03052200020	2027013958096	20 kg	SK



RAL	Colour Description	Gloss	Product Code	Material Code	Unit	Stock
RAL 2001	Red orange	5 ±/60°	AE03052200120	2027013791099	20 kg	DE
RAL 2002	Vermilion	5 ±/60°	AE03052200220	2027011650091	20 kg	SK
RAL 2003	Pastel orange	5 ±/60°	AE03052200320	2027013608090	20 kg	SK
RAL 2004	Pure orange	5 ±/60°	AE03052200420	2027011183094	20 kg	SK
RAL 2008	Bright red orange	5 ±/60°	AE03052200820	2027013704099	20 kg	SK
RAL 2009	Traffic orange	5 ±/60°	AE03052200920	2027012605090	20 kg	DE
RAL 2010	Signal orange	5 ±/60°	AE03052201020 ^{NEW}	2027010613097	20 kg	FR
RAL 2011	Deep orange	5 ±/60°	AE03052201120	2027013283099	20 kg	DE
RAL 3000	Flame red	5 ±/60°	AE03053300020	2027011025097	20 kg	SK
RAL 3001	Signal red	5 ±/60°	AE03053300120	2027011727090	20 kg	SK
RAL 3002	Carmine red	5 ±/60°	AE03053300220	2027011580091	20 kg	SK
RAL 3003	Ruby red	5 ±/60°	AE03053300320	2027011326095	20 kg	SK
RAL 3004	Purple red	5 ±/60°	AE03053300420	2021005234090	20 kg	SK
RAL 3005	Wine red	5 ±/60°	AE03053300520	2021005235097	20 kg	SK
RAL 3007	Black red	5 ±/60°	AE03053300720	2027011129092	20 kg	DE
RAL 3009	Oxide red	5 ±/60°	AE03053300920	2027011189096	20 kg	SK
RAL 3011	Brown red	5 ±/60°	AE03053301120	2027011971097	20 kg	SK
RAL 3012	Beige red	5 ±/60°	AE03053301220 ^{NEW}	2027014713090	20 kg	FR
RAL 3013	Tomato red	5 ±/60°	AE03053301320 ^{NEW}	2027011667099	20 kg	FR
RAL 3016	Coral red	5 ±/60°	AE03053301620 ^{NEW}	2027013734096	20 kg	FR
RAL 3018	Strawberry red	5 ±/60°	AE03053301820	2027012695091	20 kg	SK
RAL 3020	Traffic red	5 ±/60°	AE03053302020	2027011644090	20 kg	SK
RAL 3031	Orient red	5 ±/60°	AE03053303120 ^{NEW}	2027015209097	20 kg	FR
RAL 4004	Claret violet	5 ±/60°	AE03053400420 ^{NEW}	2027013841091	20 kg	FR
RAL 4005	Blue lilac	5 ±/60°	AE03053400520	2027012239097	20 kg	SK
RAL 4006	Traffic purple	5 ±/60°	AE03053400620	2027011753099	20 kg	DE
RAL 4007	Purple violet	5 ±/60°	AE03053400720	2027011616097	20 kg	SK
RAL 4008	Signal violet	5 ±/60°	AE03053400820 ^{NEW}	2027013005097	20 kg	FR
RAL 4010	Telemagenta	5 ±/60°	AE03053401020	2027012039093	20 kg	DE
RAL 5000	Violet blue	5 ±/60°	AE03055500020	2027011744097	20 kg	SK
RAL 5001	Green blue	5 ±/60°	AE03055500120 ^{NEW}	2027012715096	20 kg	FR
RAL 5002	Ultramarine blue	5 ±/60°	AE03055500220	2027010344090	20 kg	SK
RAL 5003	Sapphire blue	5 ±/60°	AE03055500320	2021005236094	20 kg	SK
RAL 5004	Black blue	5 ±/60°	AE03055500420	2027012618090	20 kg	SK
RAL 5005	Signal blue	5 ±/60°	AE03055500520	2021005237091	20 kg	SK
RAL 5007	Brilliant blue	5 ±/60°	AE03055500720	2027011578098	20 kg	DE
RAL 5008	Grey blue	5 ±/60°	AE03055500820	2021005238098	20 kg	SK
RAL 5009	Azure blue	5 ±/60°	AE03055500920	2027011949096	20 kg	DE
RAL 5010	Gentian blue	5 ±/60°	AE03055501020	2021005356099	20 kg	SK
RAL 5011	Steel blue	5 ±/60°	AE03055501120	2027010010094	20 kg	DE
RAL 5012	Light blue	5 ±/60°	AE03055501220	2027011970090	20 kg	SK
RAL 5013	Cobalt blue	5 ±/60°	AE03055501320	2027012253093	20 kg	SK
RAL 5014	Pigeon blue	5 ±/60°	AE03055501420	2021005239095	20 kg	DE
RAL 5015	Sky blue	5 ±/60°	AE03055501520	2027012238090	20 kg	SK
RAL 5017	Traffic blue	5 ±/60°	AE03055501720	2027012606097	20 kg	DE
RAL 5018	Turquoise blue	5 ±/60°	AE03055501820	2027012237093	20 kg	SK

RAL	Colour Description	Gloss	Product Code	Material Code	Unit	Stock
RAL 5019	Capri blue	5 ±/60°	AE03055501920	2027014737096	20 kg	DE
RAL 5021	Water blue	5 ±/60°	AE03055502120	2027012809092	20 kg	SK
RAL 5023	Distant blue	5 ±/60°	AE03055502320	2027011166097	20 kg	DE
RAL 5024	Pastel blue	5 ±/60°	AE03055502420	2021005240091	20 kg	SK
RAL 6001	Emerald green	5 ±/60°	AE03056600120	2027014753096	20 kg	DE
RAL 6003	Olive green	5 ±/60°	AE03056600320	2027011675094	20 kg	SK
RAL 6004	Blue green	5 ±/60°	AE03056600420 <small>NEW</small>	2027013679090	20 kg	FR
RAL 6005	Moss green	5 ±/60°	AE03056600520	2021005241098	20 kg	SK
RAL 6007	Bottle green	5 ±/60°	AE03056600720	2021005307091	20 kg	SK
RAL 6008	Brown green	5 ±/60°	AE03056600820	2027013948097	20 kg	SK
RAL 6009	Fir green	5 ±/60°	AE03056600920	2021005242095	20 kg	SK
RAL 6011	Reseda green	5 ±/60°	AE03056601120	2027010106094	20 kg	DE
RAL 6012	Black green	5 ±/60°	AE03056601220	2027010703095	20 kg	DE
RAL 6013	Reed green	5 ±/60°	AE03056601320 <small>NEW</small>	2027011665095	20 kg	FR
RAL 6014	Yellow olive	5 ±/60°	AE03056601420	2027011467095	20 kg	SK
RAL 6015	Black olive	5 ±/60°	AE03056601520 <small>NEW</small>	2027011536098	20 kg	FR
RAL 6016	Turquoise green	5 ±/60°	AE03056601620	2027012236096	20 kg	DE
RAL 6017	May green	5 ±/60°	AE03056601720	2021005243092	20 kg	SK
RAL 6018	Yellow green	5 ±/60°	AE03056601820	2027011733091	20 kg	SK
RAL 6019	Pastel green	5 ±/60°	AE03056601920	2021005244099	20 kg	SK
RAL 6021	Pale green	5 ±/60°	AE03056602120	2021005245096	20 kg	SK
RAL 6022	Olive drab	5 ±/60°	AE03056602220 <small>NEW</small>	2027011466098	20 kg	FR
RAL 6027	Light green	5 ±/60°	AE03056602720 <small>NEW</small>	2027013977097	20 kg	FR
RAL 6029	Mint green	5 ±/60°	AE03056602920	2027010404091	20 kg	SK
RAL 6033	Mint turquoise	5 ±/60°	AE03056603320 <small>NEW</small>	2027013737097	20 kg	FR
RAL 6034	Pastel turquoise	5 ±/60°	AE03056603420 <small>NEW</small>	2027011438095	20 kg	FR
RAL 7000	Squirrel grey	5 ±/60°	AE03057700020	2027013124095	20 kg	DE
RAL 7001	Silver grey	5 ±/60°	AE03057700120	2027012626095	20 kg	SK
RAL 7002	Olive grey	5 ±/60°	AE03057700220	2027012127097	20 kg	DE
RAL 7003	Moss grey	5 ±/60°	AE03057700320	2027010076090	20 kg	DE
RAL 7004	Signal grey	5 ±/60°	AE03057700420	2027011131095	20 kg	DE
RAL 7005	Mouse grey	5 ±/60°	AE03057700520	2027011333093	20 kg	SK
RAL 7006	Beige grey	5 ±/60°	AE03057700620	2027011415096	20 kg	SK
RAL 7008	Khaki grey	5 ±/60°	AE03057700820	2027013838091	20 kg	DE
RAL 7009	Green grey	5 ±/60°	AE03057700920	2025000032095	20 kg	DE
RAL 7010	Tarpaulin grey	5 ±/60°	AE03057701020	2027011759091	20 kg	SK
RAL 7011	Iron grey	5 ±/60°	AE03057701120	2027011132092	20 kg	SK
RAL 7012	Basalt grey	5 ±/60°	AE03057701220	2021005246093	20 kg	SK
RAL 7013	Brown grey	5 ±/60°	AE03057701320	2027012528092	20 kg	DE
RAL 7015	Slate grey	5 ±/60°	AE03057701520	2021003985093	20 kg	SK
RAL 7016	Anthracite grey	5 ±/60°	AE03057701620	2021005247090	20 kg	SK
RAL 7021	Black grey	5 ±/60°	AE03057702120	2021005248097	20 kg	SK
RAL 7022	Umbra grey	5 ±/60°	AE03057702220	2027010313096	20 kg	SK
RAL 7023	Concrete grey	5 ±/60°	AE03057702320	2027010179098	20 kg	SK
RAL 7024	Graphite grey	5 ±/60°	AE03057702420	2021005249094	20 kg	SK
RAL 7026	Granite grey	5 ±/60°	AE03057702620	2027012261098	20 kg	SK

RAL	Colour Description	Gloss	Product Code	Material Code	Unit	Stock
RAL 7030	Stone grey	5 ±/60°	AE03057703020	2027010948090	20 kg	SK
RAL 7031	Blue grey	5 ±/60°	AE03057703120	2021005428093	20 kg	DE
RAL 7032	Pebble grey	5 ±/60°	AE03057703220	2027010797094	20 kg	SK
RAL 7033	Cement grey	5 ±/60°	AE03057703320	2027011357099	20 kg	DE
RAL 7034	Yellow grey	5 ±/60°	AE03057703420	2021005250090	20 kg	SK
RAL 7035	Light grey	5 ±/60°	AE03057703520	2021005251097	20 kg	SK
RAL 7036	Platinum grey	5 ±/60°	AE03057703620	2027010900098	20 kg	SK
RAL 7037	Dusty grey	5 ±/60°	AE03057703720	2027009913092	20 kg	SK
RAL 7038	Agate grey	5 ±/60°	AE03057703820	2021005308098	20 kg	SK
RAL 7039	Quartz grey	5 ±/60°	AE03057703920	2021005252094	20 kg	SK
RAL 7040	Window grey	5 ±/60°	AE03057704020	2027011646094	20 kg	SK
RAL 7042	Traffic grey A	5 ±/60°	AE03057704220	2027010876096	20 kg	SK
RAL 7043	Traffic grey B	5 ±/60°	AE03057704320	2027011040090	20 kg	SK
RAL 7044	Silk grey	5 ±/60°	AE03057704420	20270110892096	20 kg	SK
RAL 7045	Telegrey 1	5 ±/60°	AE03057704520	2027010884091	20 kg	SK
RAL 7046	Telegrey 2	5 ±/60°	AE03057704620	2027011701090	20 kg	SK
RAL 7047	Telegrey 4	5 ±/60°	AE03057704720	2027010832092	20 kg	SK
RAL 8000	Green brown	5 ±/60°	AE03058800020	2027013836097	20 kg	SK
RAL 8001	Ochre brown	5 ±/60°	AE03058800120	2027013687095	20 kg	DE
RAL 8002	Signal brown	5 ±/60°	AE03058800220	2027013441093	20 kg	DE
RAL 8003	Clay brown	5 ±/60°	AE03058800320	2027013421095	20 kg	SK
RAL 8004	Copper brown	5 ±/60°	AE03058800420	2027013187090	20 kg	SK
RAL 8007	Fawn brown	5 ±/60°	AE03058800720	2027010299093	20 kg	DE
RAL 8008	Olive brown	5 ±/60°	AE03058800820	2027011468092	20 kg	DE
RAL 8011	Nut brown	5 ±/60°	AE03058801120	2021005253091	20 kg	SK
RAL 8012	Red brown	5 ±/60°	AE03058801220	2027013736090	20 kg	SK
RAL 8014	Sepia brown	5 ±/60°	AE03058801420	2021005254098	20 kg	SK
RAL 8015	Chestnut brown	5 ±/60°	AE03058801520	2021005810096	20 kg	DE
RAL 8016	Mahogany brown	5 ±/60°	AE03058801620	2027012235099	20 kg	DE
RAL 8017	Chocolate brown	5 ±/60°	AE03058801720	2027011130098	20 kg	SK
RAL 8019	Grey brown	5 ±/60°	AE03058801920	2021005255095	20 kg	SK
RAL 8022	Black brown	5 ±/60°	AE03058802220	2027010077097	20 kg	SK
RAL 8023	Orange brown	5 ±/60°	AE03058802320	2027012058094	20 kg	DE
RAL 8024	Beige brown	5 ±/60°	AE03058802420	2027012756099	20 kg	SK
RAL 8025	Pale brown	5 ±/60°	AE03058802520	2027013863093	20 kg	SK
RAL 8028	Terra brown	5 ±/60°	AE03058802820	2027011128095	20 kg	SK
RAL 9001	Cream	5 ±/60°	AE03059900120	2027010298096	20 kg	SK
RAL 9002	Grey white	5 ±/60°	AE03059900220	2021005299099	20 kg	SK
RAL 9003	Signal white	5 ±/60°	AE03059900320	2027011329096	20 kg	SK
RAL 9004	Signal black	5 ±/60°	AE03054900420	2027011890091	20 kg	SK
RAL 9005	Jet black	5 ±/60°	AE03054900520	2021005256092	20 kg	SK
RAL 9010	Pure white	5 ±/60°	AE03059901020	2021005259093	20 kg	SK
RAL 9011	Graphite black	5 ±/60°	AE03054901120	2027010883094	20 kg	SK
RAL 9016	Traffic white	5 ±/60°	AE03059901620	2021005260099	20 kg	SK
RAL 9017	Traffic black	5 ±/60°	AE03054901720	2027010885098	20 kg	DE
RAL 9018	Papyrus white	5 ±/60°	AE03059901820	2027010293091	20 kg	DE

The Fine Textured Collection Specials

Description: matt, fine texture, metallic

GSB Standard & Qualicoat Class I

RAL	Colour Description	Gloss	Product Code	Material Code	Unit	Stock
RAL 9006 ±	White aluminium	5 ±/60°	AE03257900620	2021005257099	20 kg	SK
RAL 9007 ±	Grey aluminium	5 ±/60°	AE03257900720	2021005258096	20 kg	SK
RAL 9008 ±		5 ±/60°	AE03257900820	2021005441092	20 kg	SK
ca. RAL 7016	Anthracite grey	5 ±/60°	AE03157215421	2021006920091	20 kg	DE
	Grey	5 ±/60°	AE03407388027	2027011398092	20 kg	DE
ca. RAL 9007	Grey aluminium	5 ±/60°	AE03157209821	2021006698099	20 kg	DE
	Grey	5 ±/60°	AE03407387927	2027011373099	20 kg	DE
	DB 703	5 ±/60°	AE03107070320	2021006612095	20 kg	DE
	DB 701	5 ±/60°	AE03117220921	2021007391098	20 kg	DE
	DB 702	5 ±/60°	AE03157219721	2021007316091	15 kg	DE
	DB 703	5 ±/60°	AE03257707322 (no approvals)	2022008796095	20 kg	SK
	DM02	5 ±/60°	AE03407191821	2021005491097	20 kg	SK
	DM03	5 ±/60°	AE03408126021	2021005492094	20 kg	SK
	Emerald 1	5 ±/60°	AE03216117320	2021000686092	20 kg	FR
	Emerald 4	5 ±/60°	AE03216117020	2021000685095	20 kg	FR
	Amethyst 1	5 ±/60°	AE03213111120	2021000687099	20 kg	FR

Docks Bruxsel, Belgium

Cladding by Metal Design Works B.V.; photography by Bart van Vlijmen



Super Durable

The Alesta® Super Durable range of products is based on a super durable polyester resin system, higher grade pigments and stabilisers with outstanding exterior durability. It's highly suitable for very sunny environments.

GSB Master & Qualicoat Class II



Description: matt, fine texture, *metallic

RAL	Colour Description	Gloss	Product Code	Material Code	Unit	Stock
RAL 1013	Oyster white	10 ±/60°	SD130C1101320	2021009975098	20 kg	FR
RAL 1015	Light ivory	10 ±/60°	SD130C1101520	2021008658091	20 kg	FR
RAL 3004	Purple red	10 ±/60°	SD130C3300420	2027015048092	20 kg	FR
RAL 3005	Wine red	10 ±/60°	SD130C3300520	2027015046098	20 kg	FR
RAL 5003	Sapphire blue	10 ±/60°	SD130C5500320	2027015147092	20 kg	FR
RAL 6005	Moss green	10 ±/60°	SD130C6600520	2027015039090	20 kg	FR
RAL 6009	Fir green	10 ±/60°	SD130C6600920	2027015041093	20 kg	FR
RAL 7012	Basalt grey	10 ±/60°	SD130C7701220	2027015154090	20 kg	FR
RAL 7016	Anthracite grey	10 ±/60°	SD130C7701620	2021009114091	20 kg	FR
RAL 7021	Black grey	10 ±/60°	SD130C7702120	2021009220099	20 kg	FR
RAL 7035	Light grey	10 ±/60°	SD130C7703520	2027015045091	20 kg	FR
RAL 7039	Quartz grey	10 ±/60°	SD130C7703920	2021009976095	20 kg	FR
RAL 8003	Clay brown	10 ±/60°	SD130C8800320	2027015042090	20 kg	FR
RAL 8007	Fawn brown	10 ±/60°	SD130C8800720	2027015047095	20 kg	FR
RAL 8011	Nut brown	10 ±/60°	SD130C8801120	2027015043097	20 kg	FR
RAL 8014	Sepia brown	10 ±/60°	SD130C8801420	2021009115098	20 kg	FR
RAL 8019	Grey brown	10 ±/60°	SD130C8801920	2027015135099	20 kg	FR
RAL 9005	Jet black	10 ±/60°	SD130C4900520	2021009113094	20 kg	FR
RAL 9006 ±	White aluminium	5 ±/60°	SD031C7900620*	2021007756095	20 kg	DE
RAL 9007 ±	Grey aluminium	5 ±/60°	SD031C7900720*	2021007757092	20 kg	DE
RAL 9010	Pure white	10 ±/60°	SD130C9901020	2021008659098	20 kg	FR
RAL 9016	Traffic white	10 ±/60°	SD130C9901620	2021009117092	20 kg	FR

Description: matt, smooth, *metallic

RAL	Colour Description	Gloss	Product Code	Material Code	Unit	Stock
RAL 7006	Beige grey	30 ±/60°	SD300C7700620	2027013389098	20 kg	DE
RAL 7012	Basalt grey	30 ±/60°	SD300C7701220	2027012973090	20 kg	DE
RAL 7015	Slate grey	30 ±/60°	SD300C7701520	2027013202090	20 kg	DE
RAL 7016	Anthracite grey	30 ±/60°	SD300C7701620	2021007446095	15 kg	FR
RAL 7021	Black grey	30 ±/60°	SD300C7702120	2027013396096	20 kg	DE
RAL 7022	Umbra grey	30 ±/60°	SD300C7702220	2021008019090	20 kg	DE
RAL 7035	Light grey	30 ±/60°	SD300C7703520	2021007791096	20 kg	DE
RAL 7037	Dusty grey	30 ±/60°	SD300C7703720	2027012988094	20 kg	DE
RAL 7039	Quartz grey	30 ±/60°	SD300C7703920	2027012989091	20 kg	DE
RAL 7043	Traffic grey B	30 ±/60°	SD300C7704320	2027014342092	20 kg	DE
RAL 7047	Telegrey 4	30 ±/60°	SD300C7704720	2027013024098	20 kg	DE
RAL 8019	Grey brown	30 ±/60°	SD300C8801920	2027013407099	20 kg	DE
RAL 9003	Signal white	30 ±/60°	SD300C9900320	2021007824091	20 kg	DE
RAL 9004	Signal black	30 ±/60°	SD300C4900420	2027012920094	20 kg	DE
RAL 9005	Jet black	30 ±/60°	SD300C4900520	2027013014099	20 kg	DE
RAL 9006 ±	White aluminium	30 ±/60°	SD301C7900621★	2021009253097	20 kg	DE
RAL 9007 ±	Grey aluminium	30 ±/60°	SD301C7900721★	2021009254094	20 kg	DE
RAL 9010	Pure white	30 ±/60°	SD300C9901020	2021007821090	20 kg	DE
RAL 9011	Graphite black	30 ±/60°	SD300C4901120	2027013406092	20 kg	DE
RAL 9016	Traffic white	30 ±/60°	SD300C9901620	2021007826095	20 kg	DE

Description: semi gloss, smooth, *metallic

RAL	Colour Description	Gloss	Product Code	Material Code	Unit	Stock
RAL 7016	Anthracite grey	70 ±/60°	SD700C7701620	2021007788096	20 kg	DE
RAL 7021	Black grey	70 ±/60°	SD700C7702120	2021007978091	20 kg	DE
RAL 7035	Light grey	70 ±/60°	SD700C7703520	2021007942092	20 kg	DE
RAL 7039	Quartz grey	70 ±/60°	SD700C7703920	2027016267096	20 kg	SE
RAL 8077		70 ±/60°	SD700C8807720	2022010803097	20 kg	DE
RAL 9002	Grey white	70 ±/60°	SD700C9900220	2021007813095	20 kg	SE
RAL 9003	Signal white	70 ±/60°	SD700C9900320	2021007823094	20 kg	DE
RAL 9005	Jet black	70 ±/60°	SD700C4900520	2021007973096	20 kg	DE
RAL 9006 ±	White aluminium	70 ±/60°	SD701C7900620★	2021009251093	20 kg	DE
RAL 9007 ±	Grey aluminium	70 ±/60°	SD701C7900720★	2021009252090	20 kg	DE
RAL 9010	Pure white	70 ±/60°	SD700C9901020	2021007822097	20 kg	DE
RAL 9016	Traffic white	70 ±/60°	SD700C9901620	2021007825098	20 kg	DE

Description: gloss, smooth, metallic

RAL	Colour Description	Gloss	Product Code	Material Code	Unit	Stock
RAL 9006 ±	White aluminium	85 ±/60°	SD801C7900620	2021007761099	15 kg	DE
RAL 9007 ±	Grey aluminium	85 ±/60°	SD801C7900720	2021007762096	15 kg	DE

The Timeless Collection



Timeless and elegant - always in fashion but never trendy - qualities that make the new Timeless Collection stand out in the architectural segment. In this edition we have concentrated on the Top 5 effect colours with various finishes (matt, fine textured and semi-gloss) and have undertaken some technological fine-tuning.

The pearlescent nuances of the DB colours 701, 702 and 703 combined with RAL 9006 and RAL 9007 not only provide protection but enhance the design of your items, with the metallic sparkle accentuating the depth of the colour.

The Timeless Collection

Alesta® Architectural Polyester
GSB Standard & Qualicoat Class I

RAL	Colour Description	Description	Gloss	Product Code	Material Code	Unit	Stock
DB 701	Grey	matt, fine texture, metallic	5 ±/60°	AE03107070120	2021008899098	20 kg	DE
DB 702	Grey	matt, fine texture, metallic	5 ±/60°	AE03107070220	2021008918096	20 kg	DE
DB 703	Grey	matt, fine texture, metallic	5 ±/60°	AE03107070320	2021006612095	20 kg	DE
DB 701	Grey	matt, smooth, metallic	30 ±/60°	AE30107070120	2022009852099	20 kg	DE
DB 702	Grey	matt, smooth, metallic	30 ±/60°	AE30107070220	2021008901098	20 kg	DE
DB 703	Grey	matt, smooth, metallic	30 ±/60°	AE30107070320	2021008489091	20 kg	SK
RAL 9006 ±	White aluminium	matt, fine texture, metallic	5 ±/60°	AE03257900620	2021005257099	20 kg	SK
RAL 9006 ±	White aluminium	matt, smooth, metallic	30 ±/60°	AE30217900620	2021003109093	20 kg	SK
RAL 9006 ±	White aluminium	semi gloss, smooth, metallic	72 ±/60°	AE70107900620	2021008058099	20 kg	SK
RAL 9007 ±	Grey aluminium	matt, fine texture, metallic	5 ±/60°	AE03257900720	2021005258096	20 kg	SK
RAL 9007 ±	Grey aluminium	matt, smooth, metallic	30 ±/60°	AE30217900720	2021004213096	20 kg	SK
RAL 9007 ±	Grey aluminium	semi gloss, smooth, metallic	72 ±/60°	AE70107900720	2021008484096	20 kg	SK

Alesta® Super Durable
GSB Master & Qualicoat Class II

RAL	Colour Description	Description	Gloss	Product Code	Material Code	Unit	Stock
DB 701	Grey	matt, fine texture, metallic	5 ±/60°	SD031C7070120	2021008900091	20 kg	DE
DB 702	Grey	matt, fine texture, metallic	5 ±/60°	SD031C7070220	2021008917099	20 kg	DE
DB 703	Grey	matt, fine texture, metallic	5 ±/60°	SD031C7070320	2021008962099	20 kg	DE
DB 701	Grey	matt, smooth, metallic	30 ±/60°	SD301C7070120	2021008072095	20 kg	DE
DB 702	Grey	matt, smooth, metallic	30 ±/60°	SD301C7070220	2021009062095	20 kg	DE
DB 703	Grey	matt, smooth, metallic	30 ±/60°	SD301C7070320	2021008947096	20 kg	DE
RAL 9006 ±	White aluminium	matt, fine texture, metallic	5 ±/60°	SD031C7900620	2021007756095	15 kg	DE
RAL 9006 ±	White aluminium	matt, smooth, metallic	30 ±/60°	SD301C7900621	2021009253097	20 kg	DE
RAL 9006 ±	White aluminium	semi gloss, smooth, metallic	72 ±/60°	SD701C7900620	2021009251093	20 kg	DE
RAL 9007 ±	Grey aluminium	matt, fine texture, metallic	5 ±/60°	SD031C7900720	2021007757092	20 kg	DE
RAL 9007 ±	Grey aluminium	matt, smooth, metallic	30 ±/60°	SD301C7900721	2021009254094	20 kg	DE
RAL 9007 ±	Grey aluminium	semi gloss, smooth, metallic	72 ±/60°	SD701C7900720	2021009252090	20 kg	DE



Barco Courtrai, Courtesy of Beddeleem, Belgium

The Pearl Collection



Description: glossy, smooth, metallic
GSB Standard & Qualicoat Class I

RAL	Colour Description	Gloss	Product Code	Material Code	Unit	Stock
RAL 1035 ±	Pearl beige	85 ±/60°	AE80318070825	2021004295092	20 kg	SK
RAL 1036 ±	Pearl gold	85 ±/60°	AE80311080225	2021004281095	20 kg	SK
RAL 2013 ±	Pearl orange	85 ±/60°	AE80312080125	2021004282092	20 kg	SK
RAL 3032 ±	Pearl ruby red	85 ±/60°	AE80313030425	2021004283099	20 kg	SK
RAL 3033 ±	Pearl pink	85 ±/60°	AE80313020325	2025004005095	20 kg	SK
RAL 4011 ±	Pearl violet	85 ±/60°	AE80315011225	2021004284096	20 kg	DE
RAL 4012 ±	Pearl blackberry	85 ±/60°	AE80315011125	2025004132098	20 kg	DE
RAL 5025 ±	Pearl gentian blue	85 ±/60°	AE80315051025	2021004286090	20 kg	SK
RAL 5026 ±	Pearl night blue	85 ±/60°	AE80315011025	2021015801091	20 kg	DE
RAL 6035 ±	Pearl green	85 ±/60°	AE80316020225	2021004287097	20 kg	SK
RAL 6036 ±	Pearl opal green	85 ±/60°	AE80316030525	2025004280096	20 kg	DE
RAL 7048 ±	Pearl mouse grey	85 ±/60°	AE80317021625	2025000948099	15 kg	SK
RAL 8029 ±	Pearl copper	85 ±/60°	AE80318010625	2021004294095	15 kg	SK
RAL 9022 ±	Pearl light grey	85 ±/60°	AE80317005525	2021004775099	20 kg	SK
RAL 9023 ±	Pearl dark grey	85 ±/60°	AE80317004925	2021005056098	15 kg	SK

Description: matt, smooth, metallic
GSB Standard & Qualicoat Class I

RAL	Colour Description	Gloss	Product Code	Material Code	Unit	Stock
RAL 1035 ±	Pearl beige	20 ±/60°	AE20311031721	2021004193091	15 kg	FR
RAL 1036 ±	Pearl gold	20 ±/60°	AE20311051921	2021000026096	20 kg	SK
RAL 4011 ±	Pearl violet	20 ±/60°	AE20313087221	2021012698090	20 kg	FR
RAL 7048 ±	Pearl mouse grey	20 ±/60°	AE20117704820	2021007480099	20 kg	DE
RAL 9022 ±	Pearl light grey	20 ±/60°	AE20317087421	2021006013090	20 kg	FR
RAL 9023 ±	Pearl dark grey	20 ±/60°	AE20317087521	2021000391095	20 kg	FR

Airport Ahsgabat, Turkmenistan



The Star Collection



The Star Collection reflects the glamour of special effects and textures for the architectural and decorative sectors.

Like heroes in a blockbuster, this masterpiece Collection represents a range of sophisticated bonded metallic greys as well as designer colours with varied textures and mineral finishes for both outdoor and indoor applications. The Collection is divided into Modern, Vintage and Timeless selections.

GSB Standard & Qualicoat Class I

Modern

Colour Description	Description	Gloss	Product Code	Material Code	Unit	Stock
Grey 0096-B8684	matt, smooth, metallic (Qualicoat, no GSB)	27 ±/60°	AE20217068420	2021000627095	20 kg	SK
RAL 9006 ± White Aluminium	glossy, smooth, metallic	85 ±/60°	AE80157900620	2021004915099	20 kg	SK
Grey 0097-B8685	matt, smooth, metallic	25 ±/60°	AE20217168720	2021002577091	20 kg	SK
RAL 9007 ± Grey Aluminium	glossy, smooth, metallic	85 ±/60°	AE80157900720	2021004914092	20 kg	SK
Grey 9600-BG070	semi gloss, smooth, speckled (Qualicoat, no GSB)	60 ±/60°	AE60417007020	2021000157097	20 kg	FR
Grey 7832-B8821	glossy, smooth, speckled	85 ±/60°	AE80417082120	2021001756091	20 kg	FR
Manganese B2350	matt, smooth, metallic (Qualicoat, no GSB)	25 ±/60°	AE20214035020	2021012697093	20 kg	FR
January 3	matt, fine texture, metallic	6 ±/60°	AE03217049320	2021000244094	20 kg	SK
February 4	semi gloss, smooth, metallic (Qualicoat, no GSB)	50 ±/60°	AE50107050420	2021000254093	15 kg	FR
Soprano 4	matt, smooth, metallic	30 ±/60°	AE30317063325	2021003614092	20 kg	SK
Tenor 5	matt, smooth, metallic	30 ±/60°	AE30217900720	2021004213096	20 kg	SK

VINTAGE



Vintage

Colour Description	Description	Gloss	Product Code	Material Code	Unit	Stock
Brown 1247	matt, smooth (Qualicoat, no GSB)	25 ±/60°	AE20008008920	2021000027093	20 kg	FR
Brown 1247 FT	matt, fine texture	5 ±/60°	AE03058124720	2021007740094	20 kg	SK
Bronze B9837	matt, smooth, metallic (Qualicoat, no GSB)	25 ±/60°	AE20218083720	2021001864093	20 kg	FR
Bronze BG600	matt, fine texture, metallic	3 ±/60°	AE03217060020	2021000599095	15 kg	SK
January 6	matt, fine texture, metallic	4.5 ±/60°	AE03117049620	2021000250095	20 kg	SK
January 9	matt, fine texture, metallic	4 ±/60°	AE03418017920	2021000041099	20 kg	SK
Oxide 1	matt, fine texture, metallic	5 ±/60°	AE03418112320	2021000875090	20 kg	SK
Oxide 2	matt, fine texture, metallic	5 ±/60°	AE03418112420	2021000876097	20 kg	SK
Oxide 3	matt, fine texture, metallic	5 ±/60°	AE03218112520	2021000873096	20 kg	FR
Oxide 5	matt, fine texture, metallic	5 ±/60°	AE03218112620	2021000874093	20 kg	SK
Quartz 1	matt, fine texture, metallic	5 ±/60°	AE03411122820	2021015250097	20 kg	SK
Quartz 2	matt, fine texture, metallic	5 ±/60°	AE03411122920	2021015251094	20 kg	SK
Amethyst 2	matt, fine texture, metallic	5 ±/60°	AE03213111220	2021000688096	20 kg	SK
Copper red	matt, smooth, metallic	25 ±/60°	AE20218007721	2021000024092	20 kg	FR





Timeless

Colour Description	Description	Gloss	Product Code	Material Code	Unit	Stock
Grey BG451	matt, fine texture, metallic	7 ±/60°	AE03217045120	2021000226090	20 kg	SK
Grey BG452	matt, fine texture, metallic	8 ±/60°	AE03217045220	2021007004097	20 kg	SK
January 2	matt, fine texture, metallic	4.5 ±/60°	AE03117173520	2021004638097	20 kg	SK
January 4	matt, fine texture, metallic	3 ±/60°	AE03217049420	2021000600098	20 kg	SK
February 5	matt, fine texture, metallic	5 ±/60°	AE03217050520	2021000256097	20 kg	FR
February 6	matt, fine texture, metallic	7 ±/60°	AE03217050620	2021000257094	20 kg	SK
February 8	matt, fine texture, metallic	4.5 ±/60°	AE03117008820	2021001887092	15 kg	SK
Azurite 1	matt, fine texture, metallic	5 ±/60°	AE03215113820	2021000679094	20 kg	FR
Azurite 2	matt, fine texture, metallic	5 ±/60°	AE03217131820	2021000682094	20 kg	FR
Azurite 3	matt, fine texture, metallic	5 ±/60°	AE03215114020	2021000681097	20 kg	FR
Azurite 4	matt, fine texture, metallic	5 ±/60°	AE03215113920	2021000680090	20 kg	SK
Emerald 3	matt, fine texture, metallic	5 ±/60°	AE03216116920	2021000684098	20 kg	FR
White Pearl	matt, smooth, metallic	30 ±/60°	AE30109207221	2021007856092	20 kg	FR

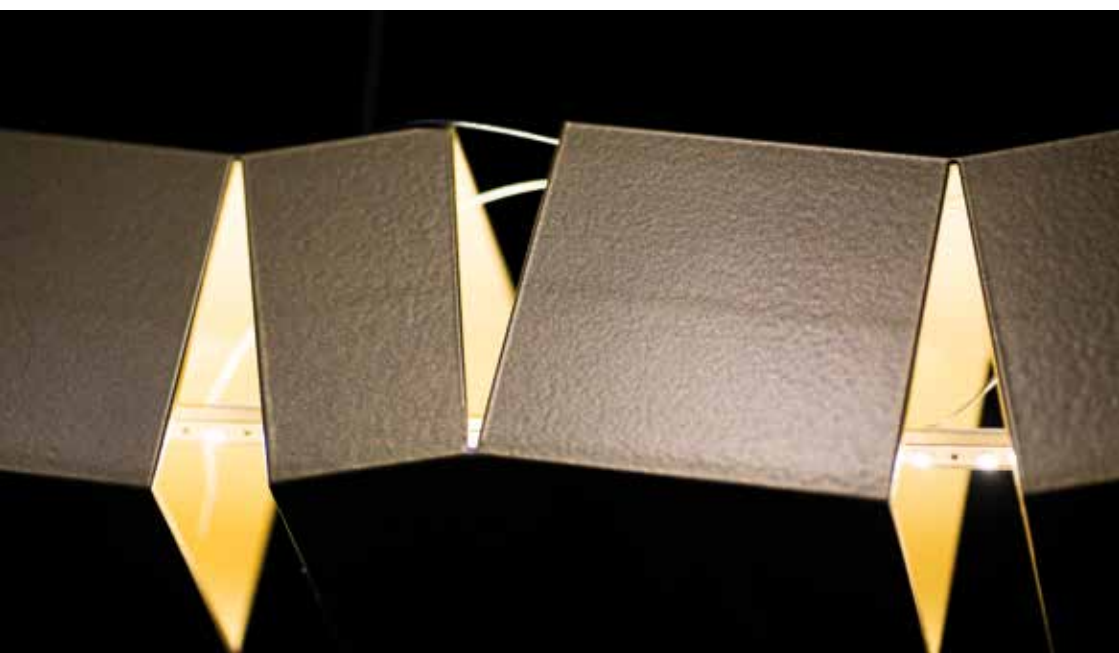
The Anodic Collection

The perfect anodised finish with all the benefits of a powder coating in a comprehensive range of colours.

Description: matt, smooth, metallic
GSB Standard & Qualicoat Class I



Colour Description	Gloss	Product Code	Material Code	Unit	Stock
Anodic Natura	20 ±/60°	AE20107000120	2021005973098	15 kg	SK
Anodic Bronze	20 ±/60°	AE20108000320	2021005992099	15 kg	SK
Anodic Brown	20 ±/60°	AE20108000420	2021005994093	15 kg	SK
Anodic Champagne	20 ±/60°	AE20101000220	2021005990095	15 kg	SK
Anodic Sapphire	20 ±/60°	AE20105000520	2021005996097	15 kg	FR
Anodic Malachite	20 ±/60°	AE20106000620	2021005998091	15 kg	FR
Anodic Black	20 ±/60°	AE20104000720	2021006311097	15 kg	SK
Anodic Gold	20 ±/60°	AE20111000820	2021008430093	15 kg	SK



Hanging Tetris, Falluce, Belgium

The Iconica Collection



Our world is changing.

The age of movement and motion is bringing an unprecedented energy to our world.

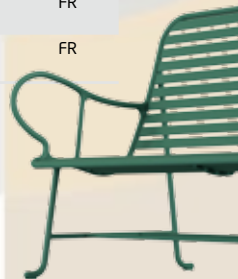
In the quest for new possibilities for a brighter future, new generations are adapting to the changing dynamics. Global issues, technological evolutions and digitalization of the real world are all factors which contribute to new found aesthetics. New perspectives, augmented reality, digitalized materials and variants on classics are all taking us on a journey into new horizons of design.

That is precisely how this selection of 40 dynamic super durable powder coatings came to life; with a passion for architecture and design, guided by a clear vision on the changes happening in our world.

GSB Master & Qualicoat Class II

Eden Garden

Colour Description	Description	Gloss	Product Code	Material Code	Unit	Stock
Senere Snow	matt, fine texture, metallic	5 ±/60°	SD031C9001020	2021009470098	20 kg	FR
Artic Ice	matt, fine texture, metallic	5 ±/60°	SD031C7002020	2021009481094	20 kg	FR
Granit Nature	matt, fine texture, metallic	5 ±/60°	SD031C7900720	2021007757092	20 kg	FR
Brown Slate	matt, fine texture	5 ±/60°	SD030C8004020	2021009430092	20 kg	FR
Earth Clay	matt, fine texture, metallic	5 ±/60°	SD031C8005020	2021009472092	20 kg	FR
Precious Sand	matt, fine texture, metallic	5 ±/60°	SD031C8006020	2021009443092	20 kg	FR
Beige Limestone	matt, fine texture, metallic	5 ±/60°	SD031C1007020	2021009469092	20 kg	FR
Nordic Lichen	matt, smooth, metallic	30 ±/60°	SD301C5008020	2021009477097	20 kg	FR
Green Chlorophyll	matt, smooth, metallic	30 ±/60°	SD301C6009020	2021009482091	20 kg	FR
Fresh Moss	matt, smooth, metallic	30 ±/60°	SD301C6010020	2021009476090	20 kg	FR



Energy Manifesto

Colour Description	Description	Gloss	Product Code	Material Code	Unit	Stock
Kinetic Tangerine	matt, fine texture	10 ±/60°	SD130C2011020	2021009527099	20 kg	FR
Digital Red	matt, smooth, metallic	30 ±/60°	SD301C3012020	2021009499099	15 kg	FR
Groovy Red	matt, smooth, metallic	30 ±/60°	SD301C3013020	2021009541095	20 kg	FR
Intense Carbon	matt, smooth, metallic	30 ±/60°	SD301C4014020	2021009512095	20 kg	FR
Denim Effect	matt, smooth, metallic	30 ±/60°	SD301C5015020	2021009543099	20 kg	FR
Electric Dream	matt, smooth, metallic	30 ±/60°	SD301C5016020	2021009510091	20 kg	FR
Aqua Splash	matt, fine texture	10 ±/60°	SD130C5017020	2021009525095	20 kg	FR
Urban Cement	matt, smooth, metallic	30 ±/60°	SD301C7018020	2021009504090	20 kg	FR
Concrete Touch	matt, smooth, metallic	30 ±/60°	SD301C7900621	2021009253097	20 kg	FR
Metallic Asphalt	matt, fine texture, metallic	5 ±/60°	SD031C4020020	2021009501099	20 kg	FR

Arty Fusion

Colour Description	Description	Gloss	Product Code	Material Code	Unit	Stock
City Terracotta	matt, fine texture, metallic	5 ±/60°	SD031C8021020	2021009587093	20 kg	FR
Fa'Brick	matt, fine texture, metallic	5 ±/60°	SD031C8022020	2021009502096	20 kg	FR
Timeless Rust	matt, fine texture, speckled	3 ±/60°	SD034C8023020	2021009585099	20 kg	FR
Cast Iron	matt, fine texture, metallic	5 ±/60°	SD031C4900520	2021007755098	20 kg	FR
Smoked Steel	matt, fine texture, metallic	5 ±/60°	SD031C8025020	2021009580094	20 kg	FR
Modern Khaki	matt, fine texture	10 ±/60°	SD130C6026020	2021009549091	20 kg	FR
Verdigris	matt, fine texture, metallic	5 ±/60°	SD031C6027020	2021009503093	20 kg	FR
Vintage Red	matt, fine texture, metallic	5 ±/60°	SD031C3300520	2021007748090	20 kg	FR
Blue Workshop	matt, fine texture, metallic	5 ±/60°	SD031C5029020	2021009588090	20 kg	FR
Green Factory	matt, fine texture, metallic	5 ±/60°	SD031C6030020	2021009508098	20 kg	FR



Techno Precious

Colour Description	Description	Gloss	Product Code	Material Code	Unit	Stock
Grey Gold	matt, smooth, metallic	30 ±/60°	SD301C7031020	2021009511098	20 kg	FR
Sunny Gold	matt, smooth, metallic	30 ±/60°	SD301C1032020	2021009540098	20 kg	FR
Gold Supreme	matt, fine texture, metallic	5 ±/60°	SD031C1033020	2021009554095	20 kg	FR
Fine Pearl	matt, smooth, metallic	30 ±/60°	SD301C9034020	2021009552091	20 kg	FR
Anodised Silver	matt, smooth, metallic	25 ±/60°	SD201C7035020	2021009496098	20 kg	FR
Silver Dream	matt, smooth, metallic	30 ±/60°	SD301C7036020	2021009513092	20 kg	FR
Original Platinum	matt, smooth, metallic	30 ±/60°	SD301C7037020	2021009500092	20 kg	FR
Techno Black	glossy, smooth, metallic	85 ±/60°	SD801C4038020	2021009507091	20 kg	FR
Noble Bronze	matt, smooth, metallic	30 ±/60°	SD301C8039020	2021009551094	20 kg	FR
Simply Copper	matt, smooth, metallic	30 ±/60°	SD301C2040020	2021009605094	20 kg	FR



The Architects Edition

The Architects Edition excels in fulfilling creative requirements and functional demands at the highest level. This remarkable collection of Alestas® Super Durable powder coatings for outdoor applications represents the new architectural understanding for nature and humanity environmentally sound processing, super durable against weather conditions and intense UV radiation.

GSB Master & Qualicoat Class II

RAL	Colour Description	Description	Gloss	Product Code	Material Code	Unit	Stock
 RAL 1015	Light ivory	matt, fine texture, metallic	5 ±/60°	SD031C1101520	2021007747093	20 kg	DE
 RAL 3005	Wine red	matt, fine texture, metallic	5 ±/60°	SD031C3300520	2021007748090	20 kg	DE
 RAL 5014	Pigeon blue	matt, fine texture, metallic	5 ±/60°	SD031C5501420	2021007749097	20 kg	DE
 RAL 6021	Pale green	matt, fine texture, metallic	5 ±/60°	SD031C6602120	2021007750093	20 kg	DE
 RAL 7016	Anthracite grey	matt, fine texture, metallic	5 ±/60°	SD031C7701620	2021007751090	20 kg	FR
 RAL 7022	Umbr grey	matt, fine texture, metallic	5 ±/60°	SD031C7702220	2021007754091	20 kg	DE
 RAL 7039	Quartz grey	matt, fine texture, metallic	5 ±/60°	SD031C7703920	2021007752097	20 kg	FR
 RAL 8019	Grey brown	matt, fine texture, metallic	5 ±/60°	SD031C8801920	2021007753094	20 kg	DE
 RAL 9005	Jet black	matt, fine texture, metallic	5 ±/60°	SD031C4900520	2021007755098	20 kg	FR
 RAL 9006 ±	White aluminium	glossy, smooth, metallic	85 ±/60°	SD801C7900620	2021007761099	15 kg	DE
 RAL 9006 ±	White aluminium	matt, smooth, metallic	30 ±/60°	SD301C7900620	2021007759096	20 kg	FR
 RAL 9006 ±	White aluminium	matt, fine texture, metallic	5 ±/60°	SD031C7900620	2021007756095	15 kg	DE
 RAL 9007 ±	Grey aluminium	glossy, smooth, metallic	85 ±/60°	SD801C7900720	2021007762096	15 kg	DE
 RAL 9007 ±	Grey aluminium	matt, smooth, metallic	30 ±/60°	SD301C7900720	2021007760092	20 kg	FR
 RAL 9007 ±	Grey aluminium	matt, fine texture, metallic	5 ±/60°	SD031C7900720	2021007757092	20 kg	DE
 RAL 9010	Pure white	matt, fine texture, metallic	5 ±/60°	SD031C9901020	2021007758099	20 kg	FR

The Earth Selection



The "Earth Selection" contains a great diversity of colour, effect and texture, which enables combination and personalisation in an affordable way.

GSB Standard & Qualicoat Class I

RAL	Colour Description	Description	Gloss	Product Code	Material Code	Unit	Stock	
	Quartz 2	matt, fine texture, metallic	5 ±/60°	AE03411122920	2021015251094	20 kg	SK	
	Bronze BG600	matt, fine texture, metallic	3 ±/60°	AE03217060020	2021000599095	15 kg	SK	
	Oxide 5	matt, fine texture, metallic	5 ±/60°	AE03218112620	2021000874093	20 kg	SK	
	Sienne	matt, fine texture, speckled	6 ±/60°	AE03448027121	2021000072093	20 kg	FR	
	RAL 7039	Quarzgrau	matt, fine texture	5 ±/60°	AE03057703920	2021005252094	20 kg	SK
		Grau	matt, fine texture	5 ±/60°	AE03007369327	2025000020092	20 kg	DE
	RAL 7021	Schwarzgrau	matt, fine texture	5 ±/60°	AE03057702120	2021005248097	20 kg	SK
	RAL 7022	Umbragrau	matt, fine texture	5 ±/60°	AE03057702220	2027010313096	20 kg	SK
		RDS 085 60 10	matt, smooth	30 ±/60°	AE30017012623	2023002614097	20 kg	DE
	RAL 7006	Beigegräu	matt, fine texture	5 ±/60°	AE03057700620	2027011415096	20 kg	SK
	RAL 7013	Braungräu	matt, fine texture	5 ±/60°	AE03057701320	2027012528092	20 kg	DE
		Anodic Gold	matt, smooth, metallic	20 ±/60°	AE20111000820	2021008430093	15 kg	SK
	RAL 7048 ±	Perlmausgräu	matt, smooth, metallic	20 ±/60°	AE20117704820	2021007480099	20 kg	DE
		Anodic Bronze	matt, smooth, metallic	20 ±/60°	AE20108000320	2021005992099	15 kg	SK
		Bronze B9837	matt, smooth, metallic (Qualicoat, no GSB)	25 ±/60°	AE20218083720	2021001864093	20 kg	FR
		Anodic Brown	matt, smooth, metallic	20 ±/60°	AE20108000420	2021005994093	15 kg	SK
		Braun 1247 FT	matt, fine texture	5 ±/60°	AE03058124720	2021007740094	20 kg	SK
	RAL 8019	Graubraun	matt, fine texture	5 ±/60°	AE03058801920	2021005255095	20 kg	SK
	RAL 8022	Schwarzbraun	matt, fine texture	5 ±/60°	AE03058802220	2027010077097	20 kg	SK
	RAL 8022	Schwarzbraun	matt, smooth	30 ±/60°	AE30018802220	2025004987094	20 kg	SK
	RAL 9004	Signalschwarz	matt, fine texture	5 ±/60°	AE03054900420	2027011890091	20 kg	SK
	RAL 9004	Signalschwarz	matt, smooth	30 ±/60°	AE300C4900420	2023003234096	20 kg	SK
	RAL 9005	Tiefschwarz	matt, fine texture	5 ±/60°	AE03054900520	2021005256092	20 kg	SK
	RAL 9005	Tiefschwarz	matt, smooth	30 ±/60°	AE30014900520	2025004986097	20 kg	SK
		Manganese B2350	matt, smooth, metallic (Qualicoat, no GSB)	25 ±/60°	AE20214035020	2021012697093	20 kg	FR
		Black 2100	matt, fine texture, metallic	6 ±/60°	AE03204126121	2021007511090	15 kg	FR
		Colour 51	glossy, smooth	95 ±/60°	AE900019148021	2021004312096	20 kg	SK
	RAL 9016	Verkehrsweiß	matt, fine texture	5 ±/60°	AE03059901620	2021005260099	20 kg	SK
	RAL 9010	Reinweiß	matt, fine texture	5 ±/60°	AE03059901020	2021005259093	20 kg	SK
	RAL 9001	Cremeweiß	matt, smooth	30 ±/60°	AE300C9900120	2023003231095	20 kg	SK
		Colour 120	matt, smooth	20 ±/60°	AE200019173125	2025004854099	20 kg	DE

The Eloxal Selection



The Eloxal Selection offers the appearance of the most popular anodised finishes, and with all the benefits associated with a powder coating. It offers brilliant effect finishes together with simplicity of application, ensuring outstanding consistency of finish even under difficult application conditions.

Description: matt, smooth, metallic
GSB Master & Qualicoat Class II

Colour Description	Gloss	Product Code	Material Code	Unit	Stock
Eloxal nature	25 ±/60°	SD201C7333721	2021009908096	20 kg	DE
Eloxal 31	25 ±/60°	SD201C7331121	2021009769093	20 kg	DE
Eloxal 32	25 ±/60°	SD201C1164121	2021009768096	20 kg	DE
Eloxal 33	25 ±/60°	SD201C8210521	2021009900090	20 kg	DE
Eloxal 34	25 ±/60°	SD201C8210621	2021009898090	20 kg	DE
Eloxal 35	25 ±/60°	SD201C4000720	2021009221096	15 kg	DE

Philharmonie de Paris, France
Architect: Jean Nouvel



Metallic effect powder coatings

General

Axalta Metallic Effect powder coatings are modern powder coating grades that are used to create appealing and attractive metallic effects on materials.

This broad and growing range of products may also provide interesting alternatives to conventional surface finishes in outdoor architecture.

Axalta Metallic Effect powder coatings stand out with their great brightness, optical depth and fascinating colour effects under changing light conditions. This phenomenon known as “metallic flip” enhances visual appeal of these powder coatings.

Produced from highly-quality special effect pigments, the appearance of Axalta Metallic Effect powder coatings depends on many parameters such as type and quantity of metallic/mica pigments, metallic process (dry-blend, bonded), observation angle, basecoat....

It is important to mention that even though special procedures and rules have been set up to maintain a certain batch to batch consistency, the formulation and reproducibility of metallic effect powders in production is more difficult than for smooth solid colours, leading to possible small variations between batches.

Bonding & dry-blending are common processes used to obtain metallic effect powder coatings. While dry-blending involves blending effect pigments and powder basecoat together (metallic particles are free from the basecoat leading to some possible product instabilities), bonding process involves bonding effect pigments to powder particles at a controlled temperature, helping to improve the stability of the final powder.

Once manufactured, the final appearance of Axalta Metallic Effect powder coatings might also depend on the process and the spraying conditions

- earthing
- charging equipment, corona or tribostatic, from various manufacturers
- hopper, level of powder
- guns settings kV/ μ A (lower settings can give a more metallic appearance in general)
- type of nozzles
- powder reclaim
- spraying distance, object orientation, stroke directions

Once defined, these settings and parameters should remain as consistent as possible and regularly controlled. This technical document is intended to help the user to apply these coatings.

Because of the possible influence of many parameters on the final result, care must be taken to keep the process and spraying conditions as stable as possible for each job, even more so if several phases will be done for the same job.

In this regard, we advise using a single batch of powder to coat the whole job.

Despite the great care taken during our manufacturing process, some small batch to batch variations may occur. These variations could lead to visible differences in color and appearance when parts coated with different batches of powder are subsequently fitted together. Furthermore, if the job is extended at a later date, or parts are refurbished, we recommend that the color and appearance of new parts are checked carefully to ensure that they are an acceptable match to the existing ones.

If a new follow-up order concerns an extension of work, please indicate the previous batch number used (production number) to Axalta to evaluate the feasibility. A subsequent check on the customer production line is mandatory to confirm suitability.

Tips for users

As a general advise, it is better to avoid coating for the same end-use on different coating lines or at different job coaters. But, if it is likely that several batches of coating are to be used for a very large project, we recommend you to prepare an adequate number of master samples at the production plant. These samples will serve as reference samples if various parts of a project need to be coated at the same quality through different lines.

Process:

- Earthing of parts to be painted must be as good as possible and checked regularly to avoid application issues and differences in the appearance.
- It is important to notice that metallic powder coatings must be used with a feed system to maintain a proper homogeneous fluidized bed, level $\frac{3}{4}$ high, in order to avoid possible separation.
- Settings must be adjusted to achieve the right appearance; as a guide we recommend working with constant 80 kV high voltage while the pressure should be adjusted according to the part to be painted.
- Super corona counter electrodes are usually used to increase the flow of the film on large flat surfaces but are not recommended when applying metallic powder paints because they tend to modify and reduce the electrostatic field and this can influence the final appearance. In case of use, a prototype must be produced for customer approval to validate the appearance.

- Best coating results are obtained with an automatic system and a distance between spray guns and parts at least 25/35 cm.
- If objects have two or more primary faces and the spray guns are offset, this can result in effect variations, for instance due to major differences in the distance between guns and items to be coated. Ensure alignment of the items if possible.
- The speed of the line should be adjusted according to the number of spray guns, the distance between spray guns and parts, the type of nozzles and the reciprocator speed (W adjustments) in order to avoid shading/clouding.
- Manual application might be irregular, leading to variation in the appearance. If the part to be painted is complex (requiring pre touch-in with a manual gun prior to automatic application), we encourage making a preliminary trial to qualify the appearance and establish all parameters before starting the job. Post touch-in (with a manual gun after automatic application) is not recommended.
- The pre touch-in stage must start with difficult areas to be painted like welds, Faraday cage effects etc. The automatic stage allows the film thickness and final aspect to be harmonised.
- When automatic application is not possible (only manual), the operator should start by spraying the difficult areas and then increase the distance between part and gun to harmonize thickness and aspect in order to avoid clouding.
- Whatever the process, the film thickness should be as uniform as possible to limit colour variations.
- Tribostatic and corona equipment, but also equipment from different suppliers, might lead to possible difference in the final appearance, so we recommend that one single equipment type is defined and used for each job.
- Aspect/colour might be influenced by reclaiming the overspray; care must be taken to ensure an appropriate ratio (maximum 30% for bonded products, depending on the contrast and metallic aspect - please contact your local representative for advice). Reclaiming should be automatic. Good practice is to work at "constant level", which means having a large quantity of powder in the hopper. Best practice is to use 3 hoppers, one for virgin powder, one for reclaimed powder and the last one for the blend at the right ratio.

In any case, a frequent visual inspection is necessary when reclaiming the overspray to validate the colour and appearance.

- Once defined, parameters and settings should be recorded for future applications.

Controls

- It might be necessary to regularly clean the nozzle and the electrode or to use the air cleaning function if included onto the corona equipment.
- Once process and settings are fixed, we recommend that the appearance is monitored/ controlled by frequent visual inspection in a light adapted control area with a sufficient inspection distance of approximately 3 to 5 meters (to see cloudy effects) as parts leave the oven, in order to be able to react quickly in the event of excessively large differences in colour **(check in comparison to an agreed standard)**.
- We advise that a pre production sample is made to qualify settings and appearance before coating the whole job and for big projects we recommend making a prototype for customer approval before starting the work.
- **Spraying on primers:** since the 2nd layer is usually sprayed at a lower voltage to prevent repulsion, a pre test is recommended to validate the appearance and when settings are fixed, make sure regularly that the appearance remains acceptable.

Dry-blended Metallic effect powder coatings:

The main difference between dry-blend and bonded products is that **reclaiming of dry-blended metallic powder is not recommended** because of possible separation between effect pigments and basecoat during the reclaiming process, increasing the risk of variation in the colour or appearance.

Moreover, since the metallic pigments are free from the basecoat, the charging effect of both metallic pigments and basecoat particles is different, increasing the risk of variation in the colour or appearance with the settings, the earthing, the equipment ...

For dry-blend products all previous recommendations must be followed (except reclaiming) with extra special care on controls.

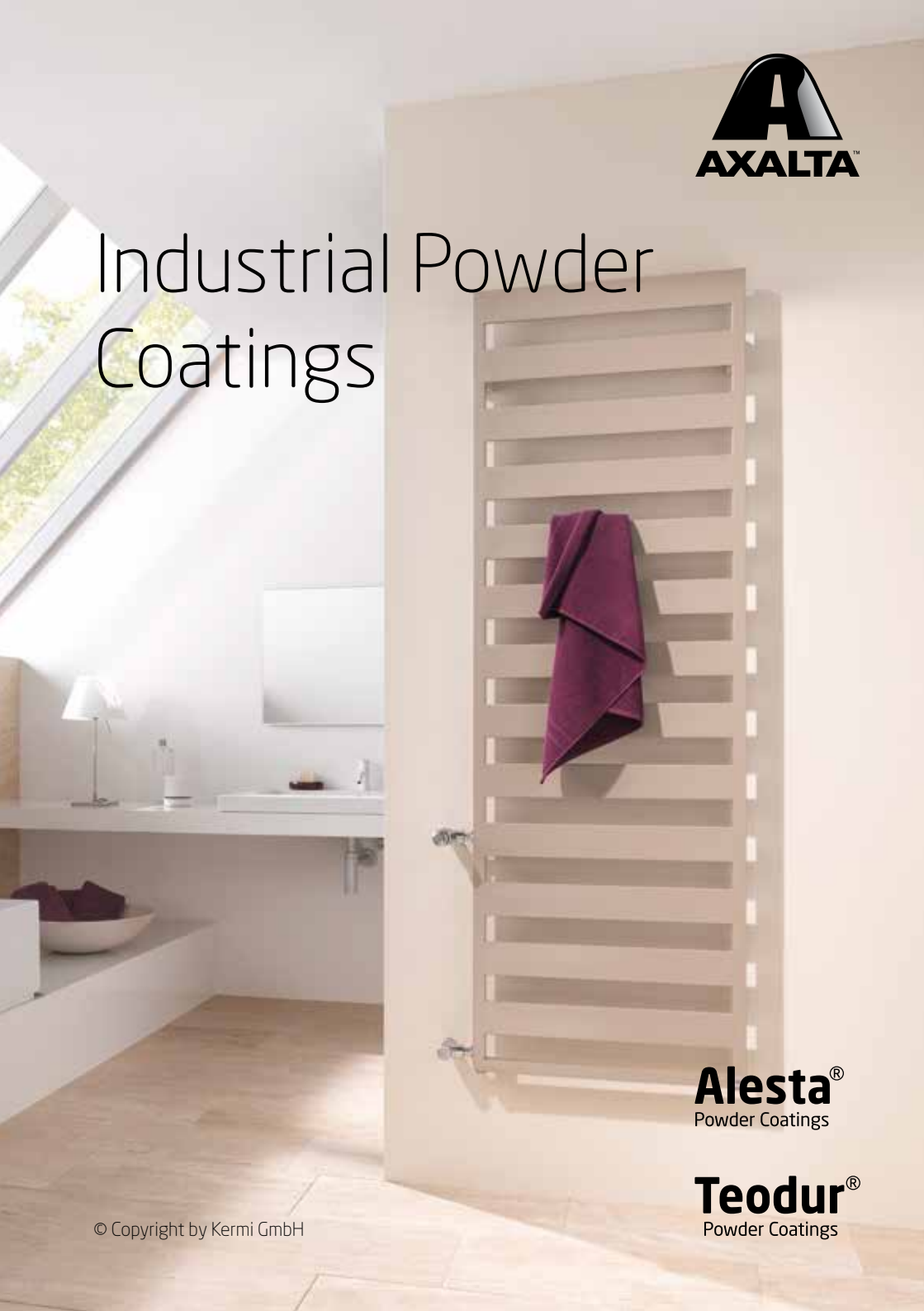


	Dry-blended products	Bonded products
Project specific order	A single batch whatever the project	A single batch per project for parts assembled together In case of a new order for an extension of work, consult Axalta for feasibility/advices (previous batch number requested) Mandatory check on customer line is necessary
Reclaiming	Not recommended	Up to 30% (depending on the contrast and metallic aspect) with adapted equipment
Hopper	Yes	Yes
To define and register the settings	Yes	Yes
Feasibility pre test	Yes, critical	Yes, critical for part with complicated geometries
Process follow-up/ controls	Yes, critical	Yes, critical
Prototype for customer pre approval and specified boundary samples masters	Yes	Yes, for big project, extension of job ...





Industrial Powder Coatings



Alesta[®]
Powder Coatings

Teodur[®]
Powder Coatings

The Inside Collection

Decorative powder coatings for indoor use

Special thermosetting powders coatings for indoor decoration with 4 spirited themes: Silence - Emotion - Evolution - Comfort.

All these products in Hybrid (Alesta® EP) and Epoxy (Alesta® E) are perfectly matching designers and architects-needs in their daily creativity.



The essential colours, both calm and soft can be found in **SILENCE**.

Colour Description	Description	Gloss	Product Code	Material Code	Unit	Stock
Elegance 4	glossy, smooth, metallic	90 ±/60°	EP80207020021	2021006238097	20 kg	SK
Elegance 5	matt, fine texture, metallic	5 ±/60°	EP03207038121	2021007207092	20 kg	FR
Elegance 6	matt, smooth, metallic	20 ±/60°	EP20207068421	2021002119093	20 kg	FR
Elegance 7	semi gloss, smooth, metallic	60 ±/60°	EP60207141321	2021002532090	20 kg	FR
Eternity 1	glossy, smooth	80 ±/60°	EP80014020721	2021005553092	20 kg	FR
Eternity 2	matt, smooth	20 ±/60°	EE20014026421	2021006218099	20 kg	FR
Eternity 3	matt, fine texture	5 ±/60°	EE03014022221	2021012141091	20 kg	FR
Eternity 4	matt, smooth		EE00014021421	2021000692093	20 kg	FR
Eternity 5	glossy, leatherette		EP25014028021	2021012061092	20 kg	FR
Motivation 3	matt, fine texture, metallic	5 ±/60°	EP03205050721	2021001879097	20 kg	FR



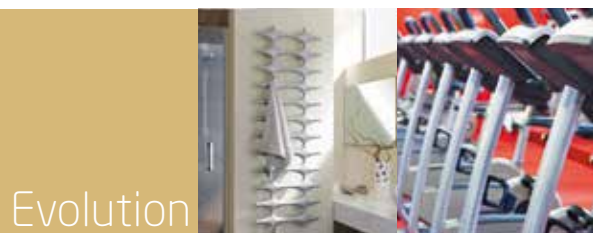
Emotion

Colour awakens **EMOTION** in our inner self and is part of a perfect habitat, reflecting present-day design.

Colour Description	Description	Gloss	Product Code	Material Code	Unit	Stock
Energy 3	glossy, smooth	90 \pm /60°	EP90012059821	2021001834096	20 kg	FR
Energy 7	glossy, smooth	90 \pm /60°	EP90013080921	2021003314091	20 kg	FR
Energy 8	glossy, smooth	90 \pm /60°	EP90015065821	2021003175098	20 kg	SK
Energy 9	glossy, smooth	90 \pm /60°	EP90011033321	2021002906099	20 kg	FR
Fusion 3	matt, smooth	20 \pm /60°	EP20016129521	2021002607095	20 kg	FR
Neutrality 2	glossy, smooth	90 \pm /60°	EP90019048121	2021002640092	20 kg	FR
Neutrality 3	glossy, smooth	90 \pm /60°	EP90019043821	2021005284095	20 kg	FR
Neutrality 4	matt, smooth	20 \pm /60°	EP20019017021	2021000460098	20 kg	FR
Neutrality 6	matt, fine texture	5 \pm /60°	EP03019122227	2027010847096	20 kg	SK

The **EVOLUTION** of sleek, luminous metallics with a shimmering richness.

Colour Description	Description	Gloss	Product Code	Material Code	Unit	Stock
Elegance 8	glossy, smooth, metallic		EP90107210121*	2021006706091	15 kg	FR
Elegance 9	matt, smooth, metallic		EP00200048621*	2021000448096	15 kg	FR
Elegance 11	semi gloss, smooth, metallic		EP00200078121*	2021002314092	15 kg	SK
Elegance 12	glossy, smooth, metallic		EP00210077921*	2021002181090	15 kg	FR
Motivation 1	glossy, smooth, metallic	80 ±/60°	EP80217030221	2021006251096	20 kg	SK
Motivation 4	semi gloss, smooth, metallic	70 ±/60°	EP70217083121	2021002208094	15 kg	FR



Evolution



COMFORT, the simplicity of life and in harmony with nature.

Colour Description	Description	Gloss	Product Code	Material Code	Unit	Stock
Luxe 1	glossy, leatherette		EP25018022821	2021002158092	20 kg	FR
Luxe 3	matt, fine texture	5 ±/60°	EP03018007421	2021000707094	20 kg	FR
Luxe 4	matt, fine texture	5 ±/60°	EP03007068621	2024012003093	20 kg	FR
Rustic 1	glossy, leatherette, metallic, speckled		EP05204034521	2021002758094	20 kg	FR
Rustic 2	glossy, leatherette, metallic, speckled		EP02217008921	2021002064096	15 kg	FR
Rustic 5	glossy, leatherette, metallic, speckled		EP05229034421	2021007211099	20 kg	FR

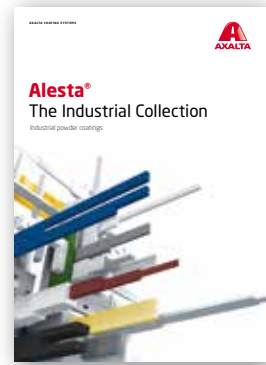
*In order to keep the metallic effect we recommend the use of a clear coat as second layer.

Eiffel Segur,
Photographe Aurélie Fernando;
Architects PH2B, France

A
AXALTA™



The Industrial Collection



Different finishes and a range of colours suited to industrial design, designed to help high surface defects and provide improved scratch resistance.

The Industrial Collection

Colour Description	Description	Gloss	Product Code	Material Code	Unit	Stock
90.006 Grey	matt, fine texture, metallic	5 ±/60°	IE03217040121	2021000217098	20 kg	SK
90.007 Grey Antique	glossy, leatherette, metallic		IE45017094421	2021003270090	20 kg	FR
90.022 Grey	glossy, smooth, metallic	80 ±/60°	IE80217001021	2024012006094	20 kg	FR
Black Antique	matt, leatherette, metallic, speckled		IE05214027520	2021000515095	15 kg	SK
Black	glossy, leatherette		IE05014900520	2021000787096	20 kg	SK
Otan Green	matt, smooth	20 ±/60°	IE10016020721	2021000796098	20 kg	FR
Platinum Grey	semi gloss, smooth, metallic	60 ±/60°	IE60207081021	2021000524097	15 kg	SK
RAL 7032 Pebble grey	glossy, leatherette		IE35017003821	2021000522093	20 kg	SK
RAL 7035 Light grey	glossy, leatherette		IE05017011021	2021000512094	20 kg	SK
RAL 9005 Jet black	matt, smooth	30 ±/60°	IE30014900520	2021000518096	20 kg	SK
RAL 9010 Pure white	matt, smooth	30 ±/60°	IE30019901020	2021007238096	20 kg	FR
RAL 9010 Pure white	glossy, leatherette		IE05019027121	2021003515092	20 kg	FR
Snow White	glossy, smooth	80 ±/60°	IE80019014221	2021003509091	20 kg	FR
Black	matt, fine texture, metallic	5 ±/60°	IE03204058927	2027011461093	20 kg	FR
Clearcoat	glossy, smooth	90 ±/60°	IE90010000120	2027011718098	15 kg	SK
Ikea No. 4	matt, smooth, metallic	5 ±/60°	IE00110733227	2027003250094	20 kg	DE
Grey Anodic No. 2	matt, smooth, metallic	30 ±/60°	IE30107061825	2025002001099	20 kg	FR
Blue	glossy, smooth, metallic	80 ±/60°	IE80115143221	2021006962091	15 kg	FR
Champagner	semi gloss, smooth, metallic	75 ±/60°	IF70107212821	2021006791097	20 kg	FR
Light ivory	glossy, leatherette		IE05011006421	2021000509094	20 kg	FR
Traffic white	glossy, leatherette		IE05019018621	2021003511094	20 kg	SK
90.006 Grau	semi gloss, smooth, metallic	65 ±/60°	IF60217059821	2021001018090	20 kg	FR
Black Copper	glossy, leatherette, metallic		IE35214120421	2021005870090	20 kg	SK

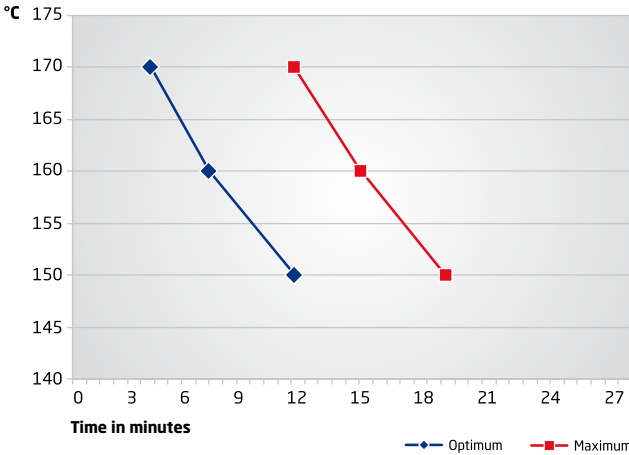
ORUZHEYNIY, Russia
Architect Mikhail Plekhanov;
Photographer Zlobin Nikolai;
Source Reynaers Aluminium



Anti-Gassing Low Bake

Powder coating with low curing temperature. This environment-friendly, high quality products offer cost savings and increased productivity.

Curing Schedule



For best results in the blanching test:

Object	Temperature	time
190 °C	7'-14'	
180 °C	12'-19'	

Anti-Gassing Low Bake

Description: semi gloss, smooth

RAL	Colour Description	Gloss	Product Code	Material Code	Unit	Stock
RAL 1013	Oyster white	70 ±/60°	IE70021101320	2025000528093	20 kg	FR
RAL 1015	Light ivory	70 ±/60°	IE70021101520	2025000538092	20 kg	FR
RAL 1018	Zinc yellow	70 ±/60°	IE70021101820	2025000591097	20 kg	SK



RAL	Colour Description	Gloss	Product Code	Material Code	Unit	Stock
RAL 1023	Traffic yellow	70 ±/60°	IE70021102320	2025000599093	20 kg	SK
RAL 3000	Flame red	70 ±/60°	IE70023300020	2025000578098	20 kg	SK
RAL 3004	Purple red	70 ±/60°	IE70023300420	2025000545090	20 kg	FR
RAL 3020	Traffic red	70 ±/60°	IE70023302020	2025000539099	20 kg	SK
RAL 5004	Black blue	70 ±/60°	IE70025500420	2025000534094	20 kg	FR
RAL 5010	Gentian blue	70 ±/60°	IE70025501020	2025000595095	20 kg	SK
RAL 5011	Steel blue	70 ±/60°	IE70025501120	2022009883093	20 kg	DE
RAL 5013	Cobalt blue	70 ±/60°	IE70025501320	2025000540095	20 kg	FR
RAL 5015	Sky blue	70 ±/60°	IE70025501520	2025000588097	20 kg	FR
RAL 5017	Traffic blue	70 ±/60°	IE70025501720	2025000544093	20 kg	FR
RAL 6005	Moss green	70 ±/60°	IE70026600520	2025000575097	20 kg	SK
RAL 6009	Fir green	70 ±/60°	IE70026600920	2025000577091	20 kg	DE
RAL 6012	Black green	70 ±/60°	IE70026601220	2025000550094	20 kg	FR
RAL 7001	Silver grey	70 ±/60°	IE70027700120	2025000543096	20 kg	FR
RAL 7005	Mouse grey	70 ±/60°	IE70027700520	2025000552098	20 kg	FR
RAL 7006	Beige grey	70 ±/60°	IE70027700620	2025000530096	20 kg	FR
RAL 7010	Tarpaulin grey	70 ±/60°	IE70027701020	2025000537095	20 kg	FR
RAL 7012	Basalt grey	70 ±/60°	IE70027701220	2025000529090	20 kg	FR
RAL 7015	Slate grey	70 ±/60°	IE70027701520	2025000602090	20 kg	FR
RAL 7016	Anthracite grey	70 ±/60°	IE70027701620	2025000579095	20 kg	SK
RAL 7021	Black grey	70 ±/60°	IE70027702120	2025000311091	20 kg	SK
RAL 7022	Umbra grey	70 ±/60°	IE70027702220	2025000312098	20 kg	FR
RAL 7024	Graphite grey	70 ±/60°	IE70027702420	2025000593091	20 kg	FR
RAL 7030	Stone grey	70 ±/60°	IE70027703020	2025000587090	20 kg	DE
RAL 7031	Blue grey	70 ±/60°	IE70027703120	2025000548091	20 kg	FR
RAL 7032	Pebble grey	70 ±/60°	IE70027703220	2025000531093	20 kg	FR
RAL 7035	Light grey	70 ±/60°	IE70027703520	2025000594098	20 kg	SK
RAL 7036	Platinum grey	70 ±/60°	IE70027703620	2025000601093	20 kg	FR
RAL 7037	Dusty grey	70 ±/60°	IE70027703720	2025000532090	20 kg	FR
RAL 7038	Agate grey	70 ±/60°	IE70027703820	2025000533097	20 kg	FR
RAL 7039	Quartz grey	70 ±/60°	IE70027703920	2025000596092	20 kg	DE
RAL 7043	Traffic grey B	70 ±/60°	IE70027704320	2025000604094	20 kg	SK
RAL 7047	Telegrey 4	70 ±/60°	IE70027704720	2025000549098	20 kg	FR
RAL 8019	Grey brown	70 ±/60°	IE70028801920	2025000542099	20 kg	SK
RAL 9001	Cream	70 ±/60°	IE70029900120	2025000527096	20 kg	DE
RAL 9002	Grey white	70 ±/60°	IE70029900220	2025000598096	20 kg	FR
RAL 9004	Signal black	70 ±/60°	IE70024900420	2025000541092	20 kg	FR
RAL 9005	Jet black	70 ±/60°	IE70024900520	2025000576094	20 kg	SK
RAL 9006 ±	White aluminium	70 ±/60°	IE70127900620	2025000309098	20 kg	SK
RAL 9007 ±	Grey aluminium	70 ±/60°	IE70127900720	2025000590090	20 kg	SK
RAL 9010	Pure white	70 ±/60°	IE70029901020	2025000581098	20 kg	DE
RAL 9016	Traffic white	70 ±/60°	IE70029901620	2025000582095	20 kg	SK

Industrial High Gloss

Description: glossy, smooth

RAL	Colour Description	Gloss	Product Code	Material Code	Unit	Stock
RAL 1001	Beige	80 ±/60°	IE80011100120	2021005554099	20 kg	DE
RAL 1003	Signal yellow	80 ±/60°	IE80011100320	2021003655095	20 kg	DE
RAL 1013	Oyster white	80 ±/60°	IE80011101320	2021000531095	20 kg	FR
RAL 1015	Light ivory	80 ±/60°	IE80011101520	2021001796097	20 kg	SK
RAL 1018	Zinc yellow	80 ±/60°	IE80011101820	2021000811098	20 kg	SK
RAL 1023	Traffic yellow	80 ±/60°	IE80011102320	2023012003096	20 kg	SK
RAL 2002	Vermilion	80 ±/60°	IE80012200220	2021000814099	20 kg	SK
RAL 3000	Flame red	80 ±/60°	IE80013300020	2021012708096	20 kg	SK
RAL 3002	Carmine red	80 ±/60°	IE80013300220	2021000533099	20 kg	SK
RAL 3004	Purple red	80 ±/60°	IE80013300420	2021000534096	20 kg	DE
RAL 3020	Traffic red	80 ±/60°	IE80013302020	2021000817090	20 kg	SK
RAL 5002	Ultramarine blue	80 ±/60°	IE80015500220	2022012034093	20 kg	SK
RAL 5003	Sapphire blue	80 ±/60°	IE80015500320	2022012006090	20 kg	SK
RAL 5005	Signal blue	80 ±/60°	IE80015500520	2021012709093	20 kg	SK
RAL 5010	Gentian blue	80 ±/60°	IE80015501020	2021000819094	20 kg	SK
RAL 5011	Steel blue	80 ±/60°	IE80015501120	2022012007097	20 kg	IT
RAL 5012	Light blue	80 ±/60°	IE80015501220	2021003798099	20 kg	SK
RAL 5015	Sky blue	80 ±/60°	IE80015501520	2021001088093	20 kg	SK



Segis, Italy

RAL	Colour Description	Gloss	Product Code	Material Code	Unit	Stock
RAL 5017	Traffic blue	80 ±/60°	IE80015501720	2021000822094	20 kg	SK
RAL 6005	Moss green	80 ±/60°	IE80016600520	2021001488091	20 kg	SK
RAL 6009	Fir green	80 ±/60°	IE80016600920	2021000541094	20 kg	DE
RAL 6016	Turquoise green	80 ±/60°	IE80016601620	2021006229095	20 kg	DE
RAL 6018	Yellow green	80 ±/60°	IE80016601820	2021011582093	20 kg	SK
RAL 7001	Silver grey	80 ±/60°	IE80017700120	2021000549090	20 kg	DE
RAL 7011	Iron grey	80 ±/60°	IE80017701120	2021000544095	20 kg	DE
RAL 7012	Basalt grey	80 ±/60°	IE80017701220	2021011584097	20 kg	DE
RAL 7015	Slate grey	80 ±/60°	IE80017701520	2021004033090	20 kg	FR
RAL 7016	Anthracite grey	80 ±/60°	IE80017701620	2021000548093	20 kg	SK
RAL 7021	Black grey	80 ±/60°	IE80017702120	2021000545092	20 kg	SK
RAL 7022	Umbra grey	80 ±/60°	IE80017702220	2021004029093	20 kg	FR
RAL 7024	Graphite grey	80 ±/60°	IE80017702420	2021000955099	20 kg	SK
RAL 7030	Stone grey	80 ±/60°	IE80017703020	2021005552095	20 kg	DE
RAL 7035	Light grey	80 ±/60°	IE80017703520	2021011583090	20 kg	SK
RAL 7037	Dusty grey	80 ±/60°	IE80017703720	2021004010091	20 kg	DE
RAL 7040	Window grey	80 ±/60°	IE80017704020	2021006230091	20 kg	SK
RAL 8017	Chocolate brown	80 ±/60°	IE80018801720	2021000550096	20 kg	DE
RAL 9001	Cream	80 ±/60°	IE80019900120	2021003521093	20 kg	SK
RAL 9002	Grey white	80 ±/60°	IE80019900220	2021003524094	20 kg	SK
RAL 9003	Signal white	80 ±/60°	IE80019900320	2021003526098	20 kg	SK
RAL 9005	Jet black	80 ±/60°	IE80014900520	2021015012091	20 kg	SK
RAL 9010	Pure white	80 ±/60°	IE80019901020	2021012127095	20 kg	SK
RAL 9016	Traffic white	80 ±/60°	IE80019901620	2021000552090	20 kg	SK

Industrial Specials

Colour Description	Description	Gloss	Product Code	Material Code	Unit	Stock
Munsell Beige	leatherette		IE05001000923	2023000259092	20 kg	SK
Evograu 1	matt, smooth, metallic	30 ±/60°	IE30257707022	2022009125094	20 kg	DE
Evograu 2	matt, smooth	20 ±/60°	IE30017715622	2022009122093	20 kg	DE
Evograu 3	matt, smooth	20 ±/60°	IE30017715722	2022009121096	20 kg	SK
Novagrau MB 7350	semi gloss, smooth	60 ±/60°	IE70057705122	2022006258092	20 kg	SK
RAL 9005 Tiefschwarz	leatherette		IE05004000723	2023001200093	20 kg	SK
RAL 9005 Tiefschwarz	matt, smooth	30 ±/60°	IE30004126321	2021007558095	20 kg	SK
MAN-Schwarz	glossy, smooth	90 ±/60°	IF90054911122	2022000071093	20 kg	SK
Blackcopper	hammer finish, metallic		IF02204947722	2022000123099	15 kg	DE
Blacksilver	hammer finish, metallic		IF02204947922	2022000125093	15 kg	DE
Black	matt, smooth		IF30014038321	2021003584098	20 kg	FR

Epoxy Polyester High-Gloss

Alesta® EP is a powder coating specifically formulated for industrial applications. It is designed for use in different applications but not on substrates exposed externally. This epoxy-polyester range offers very good corrosion protection and high mechanical properties but with limited UV-resistance.

Epoxy Polyester High Gloss

Description: glossy, smooth

RAL	Colour Description	Gloss	Product Code	Material Code	Unit	Stock
RAL 1003	Signal yellow	90 ±/60°	EP90011032821	2021002902091	20 kg	SK
RAL 1013	Oyster white	90 ±/60°	EP90011001221	2021003696098	20 kg	FR
RAL 1015	Light ivory	90 ±/60°	EP90011021021	2021000497094	20 kg	FR
RAL 1017	Saffron yellow	90 ±/60°	EP90011112921	2021000498091	20 kg	FR
RAL 1018	Zinc yellow	90 ±/60°	EP90011032921	2021002903098	20 kg	SK
RAL 1021	Colza yellow	90 ±/60°	EP90011033121	2021002905092	20 kg	SK
RAL 1023	Traffic yellow	90 ±/60°	EP90011033321	2021002906099	20 kg	FR
RAL 2000	Yellow orange	90 ±/60°	EP90012008521	2021002979093	20 kg	FR
RAL 2002	Vermilion	90 ±/60°	EP90012055621	2021003004091	20 kg	SK
RAL 2004	Pure orange	90 ±/60°	EP90012056621	2021003012096	20 kg	SK
RAL 2009	Traffic orange	90 ±/60°	EP90012008621	2021002980099	20 kg	FR
RAL 3000	Flame red	90 ±/60°	EP90013080821	2021003313094	20 kg	SK
RAL 3002	Carmine red	90 ±/60°	EP90013080921	2021003314091	20 kg	FR
RAL 3004	Purple red	90 ±/60°	EP90013066321	2021011562095	20 kg	FR
RAL 3011	Brown red	90 ±/60°	EP90013002721	2021003217095	20 kg	FR

RAL	Colour Description	Gloss	Product Code	Material Code	Unit	Stock
RAL 3020	Traffic red	90 ±/60°	EP90013081021	2021003315098	20 kg	SK
RAL 5002	Ultramarine blue	90 ±/60°	EP90015065821	2021003175098	20 kg	SK
RAL 5003	Sapphire blue	80 ±/60°	EP80015059521	2021003148092	20 kg	FR
RAL 5005	Signal blue	90 ±/60°	EP90015090521	2021003205092	20 kg	FR
RAL 5010	Gentian blue	90 ±/60°	EP90015059321	2021011563092	20 kg	SK
RAL 5011	Steel blue	90 ±/60°	EP90015064021	2021003168090	20 kg	FR
RAL 5012	Light blue	90 ±/60°	EP90015061521	2021003160094	20 kg	DE
RAL 5014	Pigeon blue	90 ±/60°	EP90015065121	2021003172097	20 kg	FR
RAL 5015	Sky blue	90 ±/60°	EP90015058721	2021003142090	20 kg	SK
RAL 5017	Traffic blue	90 ±/60°	EP90015067521	2021011565096	20 kg	FR
RAL 5019	Capri blue	90 ±/60°	EP90015068821	2021011566093	20 kg	FR
RAL 5021	Water blue	90 ±/60°	EP90015066621	2021011564099	20 kg	FR
RAL 6018	Yellow green	90 ±/60°	EP90016081721	2021011572094	20 kg	SK
RAL 6027	Light green	90 ±/60°	EP90016061121	2021003157094	20 kg	FR
RAL 6029	Mint green	90 ±/60°	EP90016081921	2021000034091	20 kg	FR
RAL 7001	Silver grey	90 ±/60°	EP90017086821	2021011575095	20 kg	DE
RAL 7004	Signal grey	90 ±/60°	EP90017052921	2021003632096	20 kg	SK
RAL 7011	Iron grey	90 ±/60°	EP90017006521	2021011574098	20 kg	FR
RAL 7012	Basalt grey	90 ±/60°	EP90017006321	2021003567091	20 kg	SK
RAL 7015	Slate grey	80 ±/60°	EP80017005021	2021003552097	20 kg	FR
RAL 7016	Anthracite grey	80 ±/60°	EP80017005521	2021000752094	20 kg	FR
RAL 7021	Black grey	90 ±/60°	EP90017006221	2021003564090	20 kg	FR
RAL 7024	Graphite grey	80 ±/60°	EP80017006021	2021136176097	20 kg	FR
RAL 7030	Stone grey	90 ±/60°	EP90017004821	2021003548090	20 kg	FR
RAL 7032	Pebble grey	90 ±/60°	EP90017003821	2021003543095	20 kg	FR
RAL 7035	Light grey	90 ±/60°	EP90017003421	2021003540094	20 kg	SK
RAL 7036	Platinum grey	90 ±/60°	EP90017009221	2021003583091	20 kg	FR
RAL 7037	Dusty grey	90 ±/60°	EP90017011021	2021003586092	20 kg	FR
RAL 7040	Window grey	90 ±/60°	EP90017067121	2021003648097	20 kg	FR
RAL 7042	Traffic grey A	80 ±/60°	EP80017010521	2021003585095	20 kg	FR
RAL 7044	Silk grey	90 ±/60°	EP90017053021	2021003634090	20 kg	FR
RAL 7047	Telegrey 4	90 ±/60°	EP90017018721	2021002053090	20 kg	SK
RAL 8017	Chocolate brown	80 ±/60°	EP80018012121	2021003704090	20 kg	FR
RAL 8019	Grey brown	90 ±/60°	EP90018012521	2021003706094	20 kg	FR
RAL 9001	Cream	90 ±/60°	EP90019015921	2021002589094	20 kg	SK
RAL 9002	Grey white	90 ±/60°	EP90019018921	2021002601093	20 kg	SK
RAL 9003	Signal white	90 ±/60°	EP90019038621	2021002623095	20 kg	SK
RAL 9005	Jet black	90 ±/60°	EP90014900520	2021002735095	20 kg	SK
RAL 9010	Pure white	90 ±/60°	EP90019901020	2021002613096	20 kg	SK
RAL 9016	Traffic white	90 ±/60°	EP90019018621	2021002595095	20 kg	SK

Epoxy Polyester Matt

Description: matt, smooth

RAL	Colour Description	Gloss	Product Code	Material Code	Unit	Stock
RAL 1015	Light ivory	20 \pm /60°	EP10011021021	2021000457098	20 kg	FR
RAL 7035	Light grey	30 \pm /60°	EP30017005221	2021012168098	20 kg	FR
RAL 9001	Cream	20 \pm /60°	EP20009089621	2021012049090	20 kg	FR
RAL 9005	Jet black	30 \pm /60°	EP30014900520	2024012016093	20 kg	SK
RAL 9010	Pure white	20 \pm /60°	EP10009901020	2021006020098	20 kg	SK
RAL 9011	Graphite black	30 \pm /60°	EP30014031821	2021000470097	20 kg	SK
RAL 9016	Traffic white	30 \pm /60°	EP30019901620	2027000571093	20 kg	SK



Epoxy Polyester Leatherette – Fine Textured

RAL	Colour Description	Description	Product Code	Material Code	Unit	Stock
RAL 1013	Oyster white	leatherette	EP35011001221	2021006074091	20 kg	FR
RAL 7001	Silver grey	hammer finish, metallic	EP52207700122	2022001461091	15 kg	DE
RAL 7016	Anthracite grey	leatherette	EP02007701622	2022001400090	20 kg	SK
RAL 7024	Graphite grey	leatherette	EP02007702422	2022008410092	20 kg	DE
RAL 7032	Pebble grey	leatherette	EP35017043021	2024012009095	20 kg	FR
RAL 7035	Light grey	leatherette	EP02007703522	2022001404098	20 kg	SK
RAL 7035	Light grey	leatherette	EP35017003421	2021000482090	20 kg	SK
RAL 7035	Light grey	glossy, leatherette	EP72007703522	2022001340099	20 kg	SK
RAL 9001	Cream	leatherette	EP35009015921	2021001619099	20 kg	FR
RAL 9002	Grey white	leatherette	EP02009900222	2022001419092	20 kg	SK
RAL 9002	Grey white	leatherette	EP25019018921	2021000467097	20 kg	FR
RAL 9003	Signal white	leatherette	EP35009038621	2021000477096	20 kg	FR
RAL 9005	Jet black	leatherette	EP02004900522	2022001420098	20 kg	DE
RAL 9010	Pure white	leatherette	EP02009901022	2022001421095	20 kg	DE
RAL 9016	Traffic white	leatherette	EP35001018621	2021000473098	20 kg	FR
	Grey	leatherette	EP02007767922	2022001416091	20 kg	SK
	ECO SVART 1	matt, fine texture	EP03014019827	2027000161096	20 kg	SK
	Grey	matt, fine texture	EP03017203327	2027000689095	20 kg	SK

Epoxy Polyester Specials

Colour Description	Description	Gloss	Product Code	Material Code	Unit	Stock
Grey	matt, smooth, metallic	37 ±/60°	EP20207769522	2022001515091	20 kg	SK
Grey	semi gloss, smooth, metallic		EP50207705222	2022001524093	20 kg	SK
RAL 9006 ± White aluminium	matt, smooth, metallic	30 ±/60°	EP20207900622	2022001517095	20 kg	DE
RAL 9005 Jet black	glossy, smooth	90 ±/60°	EP80004900522	2022001202090	20 kg	DE
Chrome silver	glossy, smooth, met.		EP70200921722	2022009142091	20 kg	DE

The Black & White Collection



Whether you are looking for internal or external decorative coatings, this collection of black and white powder systems offers a wide variety of applications with different performance benefits and surface finishes. Ranging from epoxy polyester powder coatings for indoor use to TGIC free polyester powders for outdoor use, they are available in a wide range of gloss, semi-gloss, matt, extra-matt, fine textured, leatherette, hammer or metallic finishes.

EP for Indoor use

RAL	Colour Description	Description	Gloss	Product Code	Material Code	Unit	Stock
RAL 9010	Pure white	matt, smooth	20 ±/60°	EP10009901020	2021006020098	20 kg	SK
RAL 9010	Pure white	glossy, smooth	90 ±/60°	EP90019901020	2021002613096	20 kg	SK
RAL 9010	Pure white	leatherette		EP35019901020	2021011591095	20 kg	FR
RAL 9016	Traffic white	matt, smooth	30 ±/60°	EP30019901620	2027000571093	20 kg	SK
RAL 9016	Traffic white	matt, fine texture	5 ±/60°	EP03019901620	2027006001099	20 kg	SE
RAL 9016	Traffic white	semi gloss, smooth	60 ±/60°	EP60019901620	2027005995092	20 kg	SE
RAL 9005	Jet black	matt, smooth	30 ±/60°	EP30014900520	2024012016093	20 kg	SK
RAL 9005	Jet black	semi gloss, smooth	60 ±/60°	EP60014900520	2021000487095	20 kg	FR
RAL 9005	Jet black	glossy, smooth	90 ±/60°	EP90014900520	2021002735095	20 kg	SK
RAL 9005	Jet black	matt, fine texture	5 ±/60°	EP03014900520	2027000183098	20 kg	SE
RAL 9005	Jet black	leatherette		EP35014900520	2021000481093	20 kg	IT
	Motivation 2	glossy, smooth, metallic	90 ±/60°	EP90204020720	2021000504099	20 kg	FR

IP for Industrial

RAL	Colour Description	Description	Gloss	Product Code	Material Code	Unit	Stock
RAL 9010	Pure white	matt, smooth	30 ±/60°	IE30019901020	2021007238096	20 kg	SK
RAL 9010	Pure white	glossy, smooth	80 ±/60°	IE80019901020	2021012127095	20 kg	SK
RAL 9016	Traffic white	semi gloss, smooth	70 ±/60°	IE70029901620	2025000582095	20 kg	SK
RAL 9016	Traffic white	matt, fine texture	5 ±/60°	IE03019901620	2021006542095	20 kg	SK
RAL 9003	Signal white	leatherette		IE05009900320	2021003527095	20 kg	SK
RAL 9005	Jet black	matt, smooth	20 ±/60°	IE10004900520	2023001372097	20 kg	SK
RAL 9005	Jet black	matt, smooth	30 ±/60°	IE30014900520	2021000518096	20 kg	SK
RAL 9005	Jet black	semi gloss, smooth	70 ±/60°	IE70024900520	2025000576094	20 kg	SK
RAL 9005	Jet black	glossy, smooth	80 ±/60°	IE80014900520	2021015012091	20 kg	SK
RAL 9005	Jet black	matt, fine texture	5 ±/60°	IE03014900520	2021007228097	20 kg	SK
RAL 9005	Jet black	leatherette		IE05014900520	2021000787096	20 kg	SK
	Black Antique	leatherette, metallic		IE05214027520	2021000515095	15 kg	SK

AP for Architectural

GSB Standard & Qualicoat Class I

RAL	Colour Description	Description	Gloss	Product Code	Material Code	Unit	Stock
RAL 9003	Signal white	matt, smooth	30 ±/60°	AE300C9900320	2023003233099	20 kg	SK
RAL 9010	Pure white	semi gloss, smooth	72 ±/60°	AE70019901020	2022009626096	20 kg	SK
RAL 9016	Traffic white	glossy, smooth	85 ±/60°	AE80019901620	2027007011097	20 kg	SK
RAL 9016	Traffic white	matt, fine texture	5 ±/60°	AE03059901620	2021005260099	20 kg	SK
	White Pearl	glossy, smooth, metallic	85 ±/60°	AE80217050320	2021000253096	20 kg	FR
RAL 9005	Jet black	matt, smooth	30 ±/60°	AE30014900520	2025004986097	20 kg	SK
RAL 9005	Jet black	semi gloss, smooth	72 ±/60°	AE70014900520	2022009730090	20 kg	SK
RAL 9005	Jet black	glossy, smooth	85 ±/60°	AE80014900520	2027007006093	20 kg	SK
RAL 9005	Jet black	matt, fine texture	5 ±/60°	AE03054900520	2021005256092	20 kg	SK
	Anodic Black	matt, smooth, metallic	20 ±/60°	AE20104000720	2021006311097	15 kg	SK

The Job Coater Collection

Colour Description	Description	Gloss	Product Code	Material Code	Unit	Stock
Chrome Bonded	glossy, smooth, metallic		IE90100107921*	2021009418090	15 kg	-
Ral 1013 Oyster white	matt, fine texture	7 ±/60°	AE030111105521	2021016272098	20 kg	IT
Ivory	glossy, leatherette		IE35011127621	2021000889097	20 kg	IT
RAL 1035 ± Pearl beige	glossy, smooth, metallic	80 ±/60°	AE80318070825	2021004295092	20 kg	SK
RAL 3000 Flame red	glossy, smooth	95 ±/60°	IE90013110721	2021000373091	20 kg	IT
RAL 3003 Ruby red	glossy, leatherette		IE35013305322*	2022010637098	20 kg	-
RAL 5010 Gentian blue	glossy, leatherette		IE35015505222*	2022010636091	20 kg	-
Green	glossy, leatherette		IE35116159121*	2021009436094	20 kg	-
Green	matt, leatherette		IE35306133321	20210111110098	20 kg	IT
Green	glossy, leatherette		IE35316128721	2021006203095	20 kg	IT
Grey	matt, fine texture, metallic	5 ±/60°	AE03107293521	2021008566099	20 kg	IT
Grey BG451	matt, fine texture, metallic	6 ±/60°	AE03217045120	2021000226090	20 kg	SK
Grey	matt, fine texture, metallic, speckled		AE03417219121	2021007298090	20 kg	IT
Grey	matt, fine texture, metallic	10 ±/60°	AE13207269821	2021007741091	20 kg	IT
Grey	matt, smooth, speckled		IE10407155121	2021000797095	20 kg	IT
Grey	hammer finish, metallic		IE32207310921*	2021009201098	15 kg	-
Platinum Grey	semi gloss, smooth, metallic	60 ±/60°	IE60207081021	2021000524097	15 kg	SK
ca. RAL 7001 Silver grey	glossy, leatherette		IE35017707922*	2022010635094	20 kg	-
RAL 7016 Anthracite grey	matt, smooth	30 ±/60°	AE30047271921	2021007814092	15 kg	FR
RAL 7016 Anthracite grey	glossy, leatherette		IE35017316521*	2027015527092	20 kg	-
RAL 7035 Light grey	glossy, leatherette		IE35017318221	2021009358099	20 kg	IT
ca. RAL 7035 Light grey	matt, smooth	37 ±/60°	EP30017303021*	2021008920099	20 kg	-
RAL 9006 ± White aluminium	matt, fine texture, metallic	5 ±/60°	AE03257900620	2021005257099	20 kg	SK
RAL 9006 ± White Aluminium	matt, smooth, metallic	30 ±/60°	AE30217900620	2021003109093	20 kg	SK

Colour Description	Description	Gloss	Product Code	Material Code	Unit	Stock
RAL 9006 ± White Aluminium	glossy, smooth, metallic	80 ±/60°	AE80157900620	2021004915099	20 kg	SK
RAL 9007 ± Grey aluminium	matt, fine texture, metallic	5 ±/60°	AE03257900720	2021005258096	20 kg	SK
RAL 9007 ± Grey Aluminium	glossy, smooth, metallic	75 ±/60°	AE80157900720	2021004914092	20 kg	SK
Oxide 1	matt, fine texture, metallic	5 ±/60°	AE03418112320	2021000875090	20 kg	SK
Oxide 2	matt, fine texture, metallic	5 ±/60°	AE03418112420	2021000876097	20 kg	SK
Brown	leatherette, metallic		IE05108199121	2021007971092	20 kg	IT
Brown	matt, fine texture, speckled	10 ±/60°	IE13418116721	2021006202098	20 kg	IT
Brown	glossy, leatherette		IE35118206821*	2021009320096	15 kg	-
Black	matt, fine texture, metallic	5 ±/60°	AE03204126121	2021007511090	15 kg	FR
Black	glossy, smooth	95 ±/60°	AE90014141421*	2021009676094	15 kg	-
Black	leatherette		IE05104127721*	2021007922094	20 kg	-
Black	leatherette, metallic		IE05204060221	2021000514098	15 kg	FR
Black Antique	matt, leatherette, metallic, speckled		IE05214027520	2021000515095	15 kg	SK
Black	glossy, leatherette		IE35114138321*	2021009308094	15 kg	-
Black	glossy, leatherette		IE35314112621	2021000808098	20 kg	IT
Black	matt, smooth		EE00004073924	2025004679098	20 kg	IT
Black	matt, smooth	10 ±/60°	EP10014133221*	2021008755097	20 kg	-
Black	semi matt, smooth	40 ±/60°	EP40004135521*	2021009017095	20 kg	-
Black	leatherette		EP05004133421	2021008761098	20 kg	IT
RAL 9005 Jet Black	matt, smooth	30 ±/60°	AE30044127621	2021007895091	15 kg	FR
RAL 9005 Jet Black	semi gloss, smooth	70 ±/60°	AE60004000323	2023001366096	20 kg	GB
RAL 9005 Jet Black	matt, fine texture	5 ±/60°	IE03014900520	2021007228097	20 kg	SK
RAL 9005 Jet Black	glossy, leatherette		IE05014900520	2021000787096	20 kg	SK
White	glossy, smooth	90 ±/60°	EP90019119321	2021000331091	20 kg	IT
White	leatherette		IE35019223421*	2021008928095	20 kg	-
RAL 9002 Grey white	leatherette		IE05019093921	2021000513091	20 kg	FR
RAL 9010 Pure white	matt, fine texture	5 ±/60°	AE03059901020	2021005259093	20 kg	SK
RAL 9010 Pure white	glossy, smooth	85 ±/60°	AE80019107921	2021006225097	20 kg	FR
RAL 9010 Pure white	semi gloss, leatherette		IE25019907422*	2022010570098	20 kg	-
RAL 9016 Traffic white	matt, smooth	30 ±/60°	AE30019206921	2021007836094	20 kg	IT
RAL 9016 Traffic white	glossy, smooth	85 ±/60°	AE80009015221	2021006245095	20 kg	FR
ca. RAL 9016 Traffic white	semi gloss, leatherette		IE25019907222*	2022010503096	20 kg	-
White	matt, smooth	7 ±/60°	ST00009227121*	2021008336098	15 kg	-

*Delivery time on request

Alesta® ZeroZinc Primer

Alesta® ZeroZinc anticorrosion primers are formulated using High Density Crosslinking (HDC) technology. It strengthens the barrier effect of the primer, creating a completely sealed coating that isolates the substrate from its environment.

ZeroZinc-Primer

RAL	Colour	ZeroZinc Primer	Description	Gloss	Product Code	Material Code	Unit	Stock
RAL 7032 ±	Pebble grey	ZeroZinc Steel Prime	glossy, smooth	90 ±/60°	ZF90017192420	2021005517094	20 kg	SK
RAL 7032 ±	Pebble grey	ZeroZinc Edge Prime	matt, smooth	3 ±/60°	ZF00017121720	2021000691096	20 kg	SK
RAL 9005 ±	Jet black	ZeroZinc Edge Prime ^{NEW}	matt, smooth	5 ±/60°	ZF00014137820	2021009362096	20 kg	FR
RAL 7035 ±	Light grey	ZeroZinc Antigassing Prime	glossy, smooth	85 ±/60°	ZF80027273020	2021007843092	20 kg	SK
RAL 7032 ±	Pebble grey	ZeroZinc Antigassing Reactive Prime ^{NEW}	glossy, smooth	80 ±/60°	ZF80027199920	2021005911090	20 kg	FR



Primer

Colour Description	Description	Gloss	Product Code	Material Code	Unit	Stock
Grey	glossy, smooth	85 ±/60°	EE70007711022	2022000959094	20 kg	SK
Grey	glossy, smooth	80 ±/60°	EE70027713322	2022006257095	20 kg	SK
Grey	glossy, smooth	95 ±/60°	EP90009935225	2025015140099	15 kg	DE
Zincprimer	semi gloss, smooth	70 ±/60°	ZN70017085921	2021004168099	20 kg	SK
Functional Prime Grey	glossy, smooth	90 ±/60°	EP90017275721	2021007950097	20 kg	FR
Alu QualiPrime Grey	glossy, smooth	90 ±/60°	QP90017278520	2021008053094	20 kg	SK



Light Industry

RAL	Colour Description	Description	Gloss	Product Code	Material Code	Unit	Stock
	February No. 1	matt, fine texture, metallic	5 ±/60°	AE03207050121	2025013496099	20 kg	SK
RAL 9016	Traffic white	matt, fine texture	5 ±/60°	IE03019901620	2021006542095	20 kg	SK
RAL 9005	Jet black	matt, smooth	30 ±/60°	AE30014900520	2025004986097	20 kg	SK
RAL 9005	Jet black	matt, fine texture	5 ±/60°	IF03054900522	2022009509092	20 kg	SK
	Grey Anodique	matt, smooth, metallic	20 ±/60°	IE20107089221	2021000602092	15 kg	FR
	Sable BL961	matt, fine texture, speckled	5 ±/60°	AE03441031921	2021000856099	20 kg	FR
	Grey	matt, fine texture	5 ±/60°	AE03007369327	2025000020092	20 kg	DE
RAL 9010	Pure white	matt, smooth	30 ±/60°	AE30009002323	2021012022093	20 kg	DE
RAL 9010	Pure white	semi gloss, smooth	72 ±/60°	AE70019100125	2025000837096	20 kg	DE
RAL 9003	Signal white	matt, smooth	30 ±/60°	AE300C9900320	2023003233099	20 kg	SK

Belid, Sweden



Wheel Refurbishment

With our new Alesta® WR Collection for aluminium and steel wheels we offer a range of innovative powder products for all your wheel refurbishment and customisation needs.

Colour Description	Description	Gloss	Product Code	Material Code	Unit	Stock
Clear coat	glossy, smooth	90 ±/60°	IE90010000120	2027011718098	15 kg	SK
Clear coat	matt, smooth		IE00000000623	2023001953098	15 kg	GB
Candy red	glossy, smooth	95 ±/60°	IE90010303327	2027002182099	15 kg	GB
Candy purple	glossy, smooth		IE90010300827	2027002184093	15 kg	GB
Candy blue	glossy, smooth	100 ±/60°	IE90010500627	2027002165092	15 kg	GB
Chrome silver	glossy, smooth, metallic		EP70200921722	2022009142091	20 kg	DE
Alloy sparkle silver	glossy, smooth, metallic		IE80207006225T	2021014809098	15 kg	SK
Bright Chrome Silver	matt, smooth		EP00100000523	2021004361094	15 kg	GB
Functional Prime Grey	glossy, smooth	90 ±/60°	EP90017275721	2021007950097	20 kg	FR
Gun Metal	glossy, smooth, metallic	80 ±/60°	AE80214130321	2021008381098	20 kg	GB
Manganese B2350	matt, smooth, metallic (Qualicoat, no GSB)	25 ±/60°	AE20214035020	2021012697093	20 kg	FR



Automotive

Colour Description	Description	Gloss	Product Code	Material Code	Unit	Stock
Evogrey 1	matt, smooth, metallic	30 \pm /60°	IE30257707022	2022009125094	20 kg	DE
Evogrey 2	matt, smooth	20 \pm /60°	IE30017715622	2022009122093	20 kg	DE
Evogrey 3	matt, smooth	20 \pm /60°	IE30017715722	2022009121096	20 kg	SK
Novagrey MB 7350	semi gloss, smooth	60 \pm /60°	IE70057705122	2022006258092	20 kg	SK
MAN-Black	glossy, smooth	90 \pm /60°	IF90054911122	2022000071093	20 kg	SK
Black	matt, smooth	20 \pm /60°	AE30014948522	2022008433091	15 kg	DE
Black	glossy, smooth	80 \pm /60°	EE80004927022	2022000985093	20 kg	SK

Clear coat

Colour Description	Description	Gloss	Product Code	Material Code	Unit	Stock
Clear coat	matt, smooth	5 \pm /60°	IE00000106321	2021006893098	15 kg	SK
Clear coat	matt, smooth		IE00000000623	2023001953098	15 kg	GB
Clear coat	glossy, smooth	90 \pm /60°	IE90010000120	20270111718098	15 kg	SK

Alesta® SoftTouch

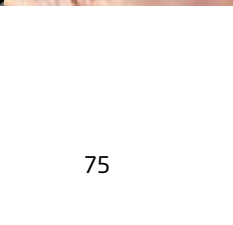
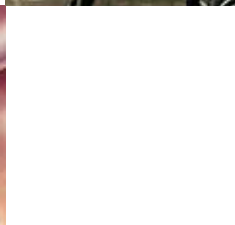
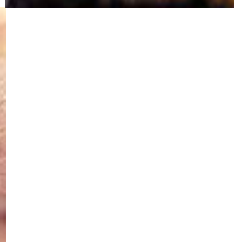
Alesta® SoftTouch can provide any pretreated metal with a velvety feeling you wouldn't expect just upon sight or could be applied over any colour for the softest finish. Furthermore we can develop any solid colour in a one layer system with SoftTouch finish upon demand. Your creative possibilities are endless.

Feel the emotion of touch.



SoftTouch

Colour Description	Description	Product Code	Material Code	Unit	Stock
Clear coat	Polyurethan, matt, smooth	ST00000900020	2021008347094	15 kg	FR



Heat Resistant

Alesta® HR is a heat resistant powder coating based on a silicone resin, specially developed to protect surfaces exposed to extremely high temperatures, up to 550 °C, without deterioration of the film.

Colour Description	Description	Gloss	Product Code	Material Code	Unit	Stock
Black	based on silicone resin, matt, smooth	8 ±/60°	HR00044059021	2021003992091	20 kg	SK
Black	based on silicone resin, matt, fine texture	5 ±/60°	HR03004109621	2021011580099	20 kg	FR
SILICONE SILVER	based on silicone resin, matt, fine texture, metallic		HR13207195421	2021005705095	15 kg	FR
Black	based on silicone resin, matt, metallic		HR00244110421	2021000345098	20 kg	IT

Hoben Stoves, France



Alesta[®]

Repair Systems

Repair system for small defects in the powder coating.

Description	Material Code	Product Code	Unit	Stock
Touch up Pencil glossy	Touch up Pencil	D12301640	12 ml	DE
Touch up Pencil semi gloss	Touch up Pencil	D15105289	12 ml	DE

Stock

SK Slovakia
DE Germany
FR France
SE Sweden
IT Italy
GB Great Britain

Subject to prior sales and modifications.

Axalta Coating Systems Austria GmbH
Mödlinger Straße 15
A-2353 Guntramsdorf
Tel.: +43 22 36 50 00
Fax: +43 22 36 50 03 99

www.powder.axaltacs.com

