



THE PERFECT MATT FINISH IS NO LONGER A DARK ART

CC6020 Chroma Matt System Clear
CC6010 Chroma Semi Matt System Clear



AN AXALTA COATING SYSTEMS BRAND

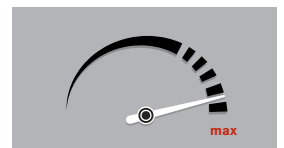
ACHIEVE EXCELLENT RESULTS QUICKER AND EASIER THAN EVER

CC6020 Chroma Matt System Clear & CC6010 Chroma Semi Matt System Clear make it easy to match every matt/semi matt finish repair entering your bodyshop – even new ultra-low matt levels. By working faster and reducing the risk of rework, you can count on higher productivity than ever.

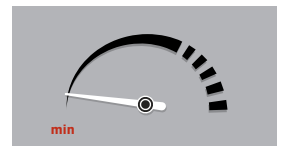
It's suitable for panel, multi-panel and overall repairs. Product haptics are excellent, and no additive is required for plastics.

Use the ChromaVision Pro Mini to find the right matt colour and ChromaWeb digital colour management software to find the applicable matt level.

01 PRODUCTIVITY: UP
This brand-new system is a reliable way of producing a high quality finish every time. Easy to use, you can count on right-first-time results and optimum productivity.



02 DRYING TIMES: DOWN
With drying times cut by a third, this best-in-class system increases bodyshop throughput and defined drying and flash-off times improve efficiency.



COUNT ON THE CORRECT GLOSS LEVEL FOR ANY MATT REFINISH JOB

Application over waterborne basecoat*

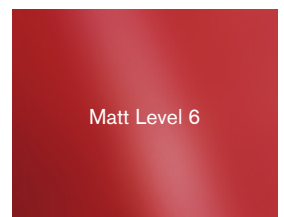
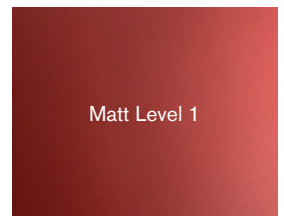
	Matt Level 1 (5-10 Gloss Unit)	Matt Level 2 (11-15 Gloss Unit)	Matt Level 3 (16-25 Gloss Unit)	Matt Level 4 (26-35 Gloss Unit)	Matt Level 5 (36-50 Gloss Unit)	Matt Level 6 (51-65 Gloss Unit)
Matt	80	65	45	40	20	0
Semi-matt	20	35	55	60	80	100

*For guidance only – please check relevant technical data sheet

Application over sanded existing basecoat or solvent-borne basecoat*

	Matt Level 1 (5-10 Gloss Unit)	Matt Level 2 (11-15 Gloss Unit)	Matt Level 3 (16-25 Gloss Unit)	Matt Level 4 (26-35 Gloss Unit)	Matt Level 5 (36-50 Gloss Unit)	Matt Level 6 (51-65 Gloss Unit)
Matt	100	70	50	45	30	10
Semi-matt	0	30	50	55	70	90

*For guidance only – please check relevant technical data sheet



TAKE THE MYSTERY OUT OF MATT FINISHES TODAY!

For more information, contact your local Cromax representative. Or go to cromax.com/eu/matt-clear and fill out the enquiry form.

